



**Highlights:**

- **The cumulative rainfall** for April\_2019 was generally in the range Long Term Mean (LTM) to below, such isolated cases were observed at Kigali, Rusizi, Bugarama, Rubavu, Ngoma, Busogo, Musanze, and Byimana stations. There was considerable widespread of heavy rainfall amounts over most parts the country.
- An increase in soil moisture was observed across the country due to the widespread of high consecutive rainfall over most parts of the country.
- The rains during May\_2019 are expected to be enhanced over the northwestern, southeast and southwestern parts of the country as opposed to the remaining parts of the country.

**I. Introduction**

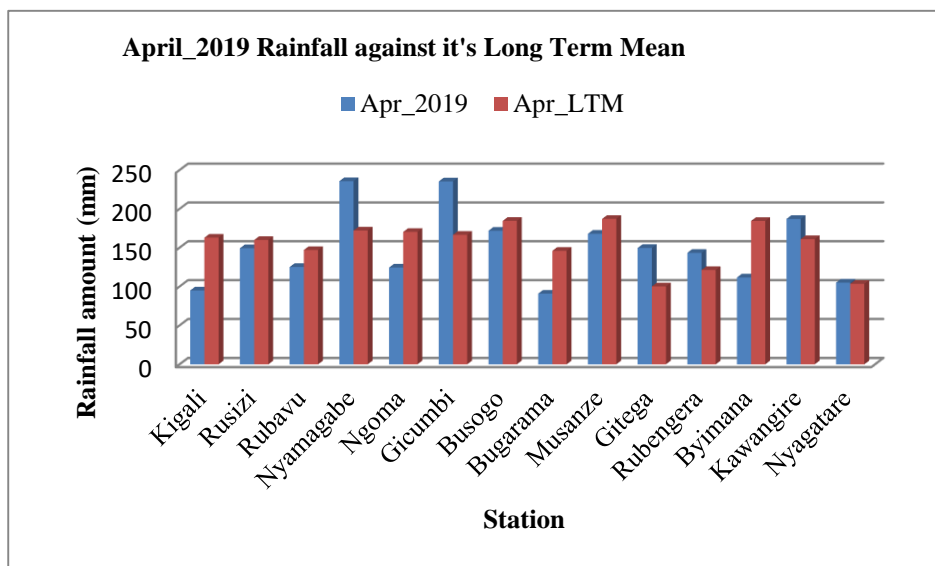
The rainfall during the month of April\_2019 was in the range of LTM to below and some isolated stations which registered such rainfall include Kigali, Rusizi, Bugarama, Rubavu, Ngoma, Busogo, Musanze, and Byimana station. Generally there was a widespread of heavy rainfall over most parts of the country.

a) The table and histogram below indicates the rainfall recorded during April\_2019 and its Long Term Mean (LTM):

**Cumulative rainfall (in mm) recorded at different stations**

Station	Apr_2019	Apr_LTM
Kigali	94.9	162.9
Rusizi	149.3	159.9
Rubavu	125.1	146.9
Nyamagabe	235.7	172.1
Ngoma	124.4	170.3
Gicumbi	235.4	166.5
Busogo	171.8	184.5
Bugarama	90.8	145.9
Musanze	167.9	187.1
Gitega	149.6	100.1
Rubengera	143.3	121.2
Byimana	111.6	184.4
Kawangire	187.0	161.0
Nyagatare	105.0	103.4

*Table1*

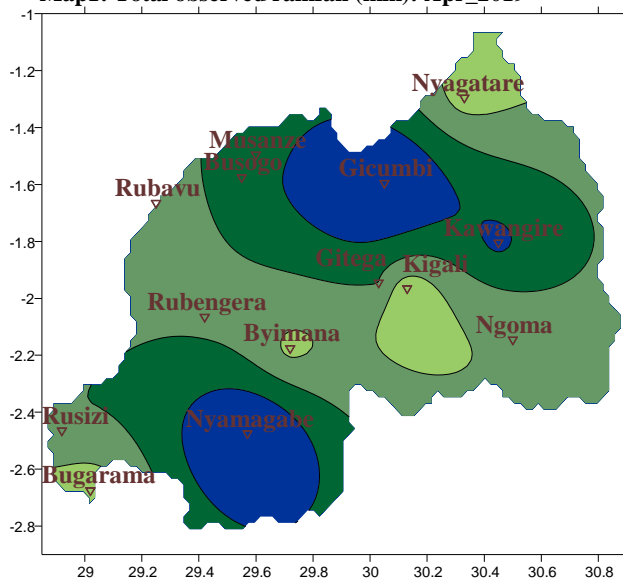


*Plot1*

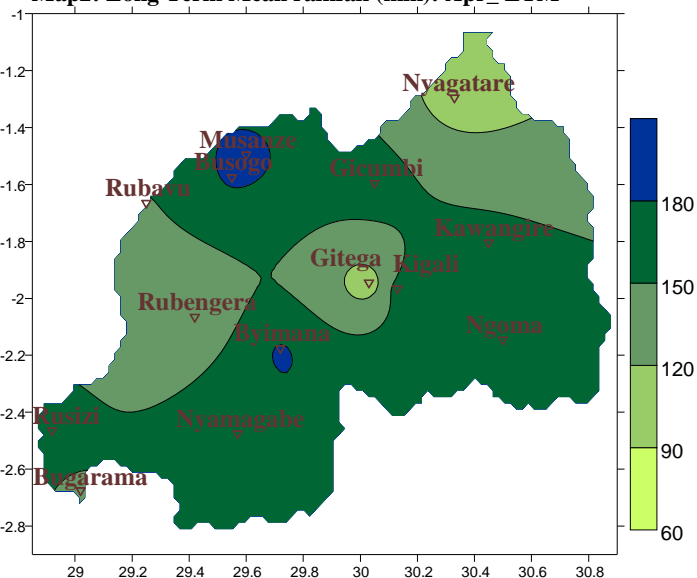
b) **Rainfall analysis:** The maps “**Map 1 and 2**” below shows the cumulative rainfall recorded during the month of April\_2019 and the Long Term Mean (LTM) cumulative rainfall for the same period.

The maps “**map 3 and 4**” shows the cumulative rainfall recorded during the month of March\_2019 the Long Term Mean (LTM) cumulative rainfall for the same period.

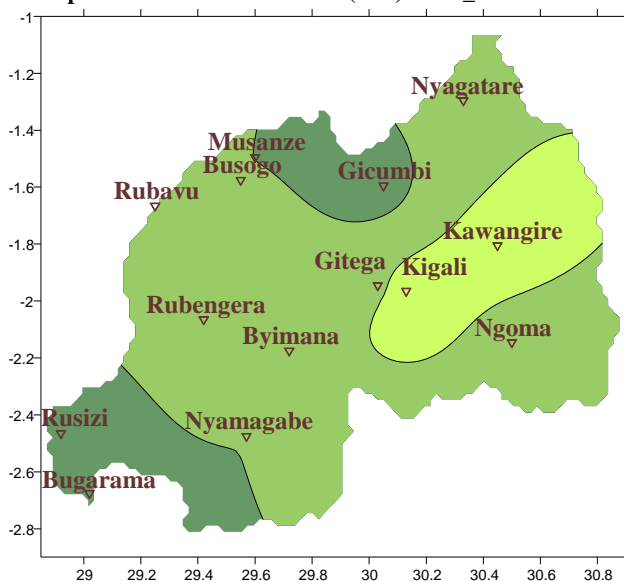
**Map1: Total observed rainfall (mm): Apr\_2019**



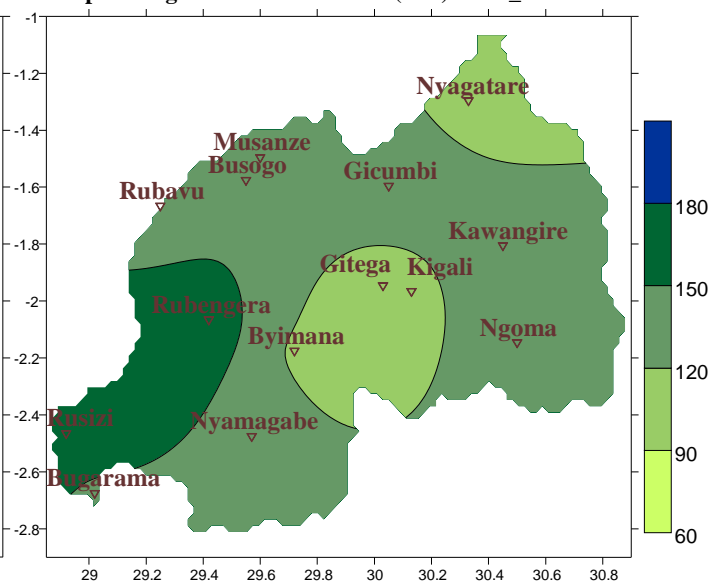
**Map2: Long Term Mean rainfall (mm): Apr\_LTM**



**Map3: Total observed rainfall (mm): Mar\_2019**



**Map4: Long Term Mean rainfall (mm): Mar\_LTM**

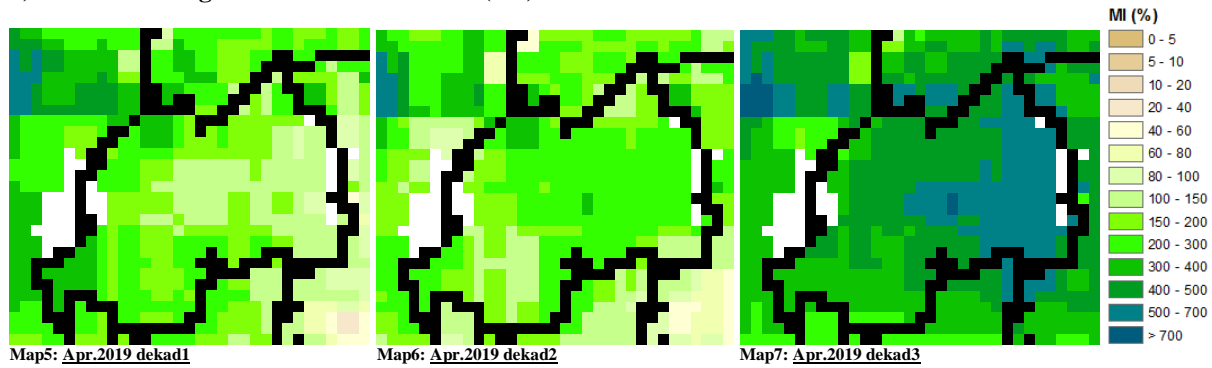


## II. Detailed observed rainfall during April\_2019

The rainfall during the month of April\_2019 was generally within range of LTM to below; there were isolated cases of stations that registered rainfall which was below the LTM namely Kigali, Rusizi, Bugarama, Rubavu, Ngoma, Busogo, Musanze, and Byimana station. Generally across many parts of the country there was a widespread of heavy rainfall which was comparable to the LTM (see **Map1&2** and **Table1**). The cumulative rainfall of March\_2019 was generally below the Long Term Mean (LTM) except the central part of the country which recorded rainfall that was within the range of the LTM (see **Map3&4**)

### III. Agricultural impact.

#### a) Satellite images: Soil Moisture Index (MI)



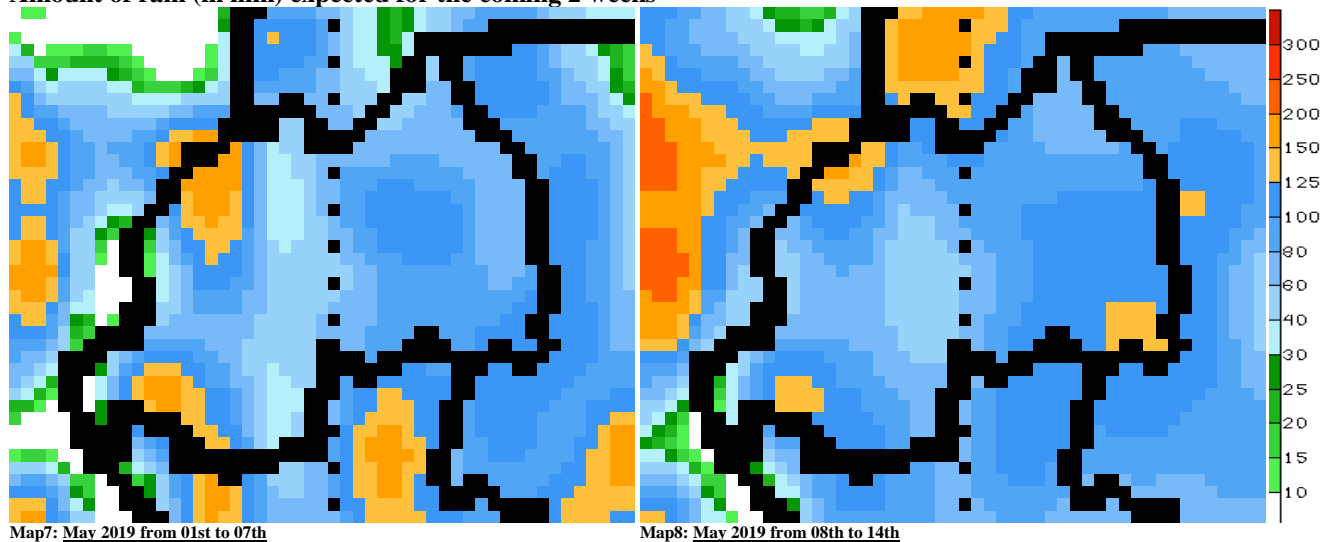
During April\_2019 the satellite derived moisture index showed increased moisture content for three consecutive dekads this was associated with widespread of high rainfall amount during the month of April 2019 (see **Map 5, 6&7**)

#### b) Rainfall forecast for May\_2019

The wet conditions of rains are expected to prevail over most parts of the country; whereby during the first dekad, the northwestern, southeast and southwestern parts of the country are expected to receive more rains compared to the remaining parts of the country:

- **Kigali City:** is expected to receive rainfall amount ranging from 60mm to 120mm within coming two weeks
- **Eastern Province:** is expected to receive rainfall amount ranging from 60mm to 150mm for coming two weeks
- **Southern Province:** is expected to receive rainfall amount ranging from 60mm to 150mm for coming two weeks
- **Western Province:** is expected to receive rainfall amount ranging from 50mm to 180mm within coming two weeks
- **Northern Province** is expected to receive rainfall amount ranging from 60mm to 180mm in the coming two weeks

#### Amount of rain (in mm) expected for the coming 2 weeks



**N.B:** This forecast should be used in conjunction with the daily (24-hour), Three (3), Five (5) and Seven (7) days forecasts issued by the Rwanda Meteorology Agency (Meteo Rwanda)