



Highlights:

- Cumulative rainfall amount from the 1st to 31st August 2018 was above normal in all parts of the country because of the rains accumulated during the last dekad
- Soil Moisture Index (MI) from remote sensing indicates a considerable increase during the 3rd dekad to a favorable situation for most crops
- We expect the month of September 2018 to be wet in most parts of the country especially the northwest and to be in the above range over the south, west and north while elsewhere we expect a normal situation

I. Introduction

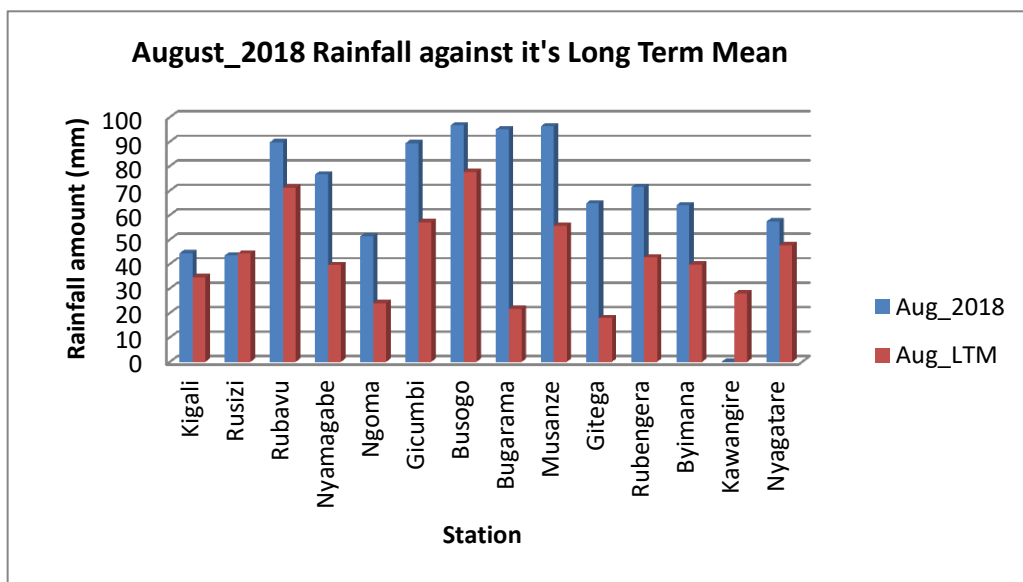
The month of August 2018 was in the above normal range in all parts of the country as a result from the rains accumulated during the last dekad

a) The table and histogram below indicates the rainfall recorded during August_2018:

Cumulative rainfall (in mm) recorded at different stations

Station	Aug_2018	Aug_LTM
Kigali	44.4	34.6
Rusizi (Kamembe)	43.5	44.3
Rubavu (Gisenyi)	89.8	71.2
Nyamagabe (Gikongoro)	76.6	39.5
Ngoma (Kibungo)	51.3	24.0
Gicumbi (Byumba)	89.4	57.1
Busogo	96.7	77.6
Bugarama	95.0	21.7
Musanze (Ruhengeri)	96.3	55.6
Gitega	64.8	17.9
Rubengera	71.4	42.7
Byimana	64.0	39.8
Kawangire	xxx	28.0
Nyagatare	57.4	47.7

Table1

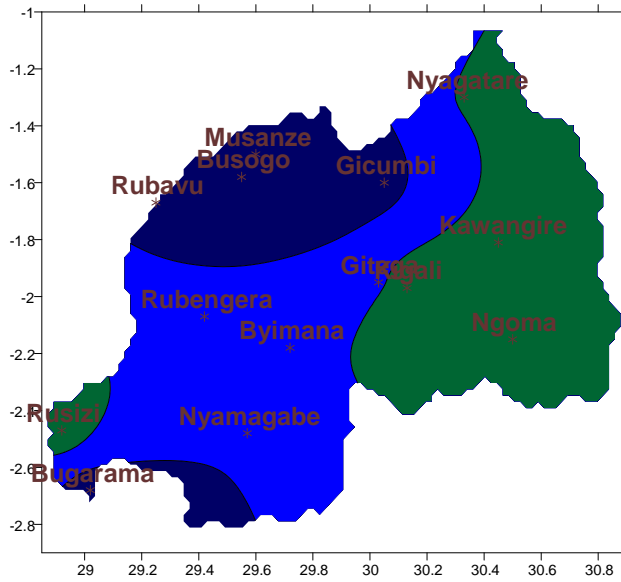


Plot1

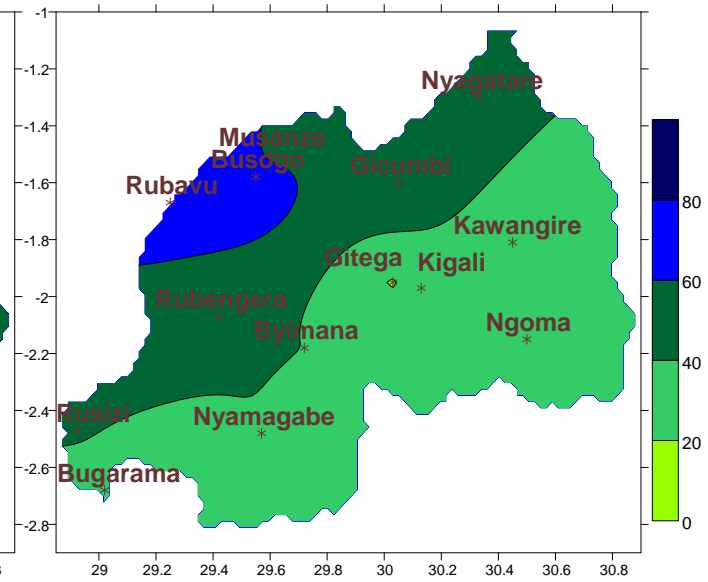
b) **Rainfall analysis:** The maps “Map 1 and 2” below show the cumulative rainfall recorded during August_2018 and the cumulative rainfall for the same period.

The maps “map 3 and 4” show the cumulative rainfall recorded during July_2018 and the cumulative rainfall for the same period

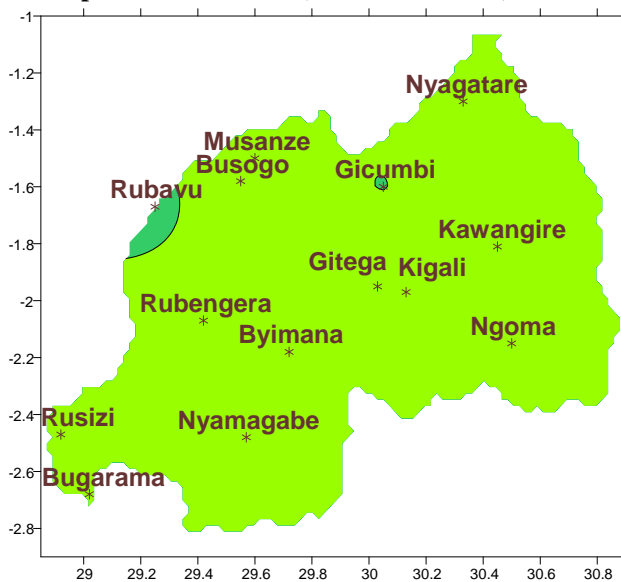
Map1: Total Rainfall: (1st –31st Aug. 2018)



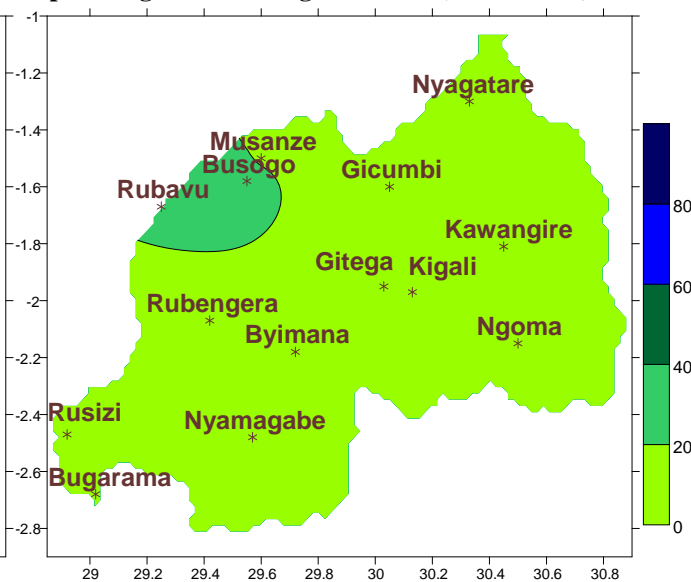
Map2: Long Term Average Rainfall: (1st –31st Aug.)



Map3: Total Rainfall: (1st –31st Jul. 2018)



Map4: Long Term Average Rainfall: (1st –31st Jul.)

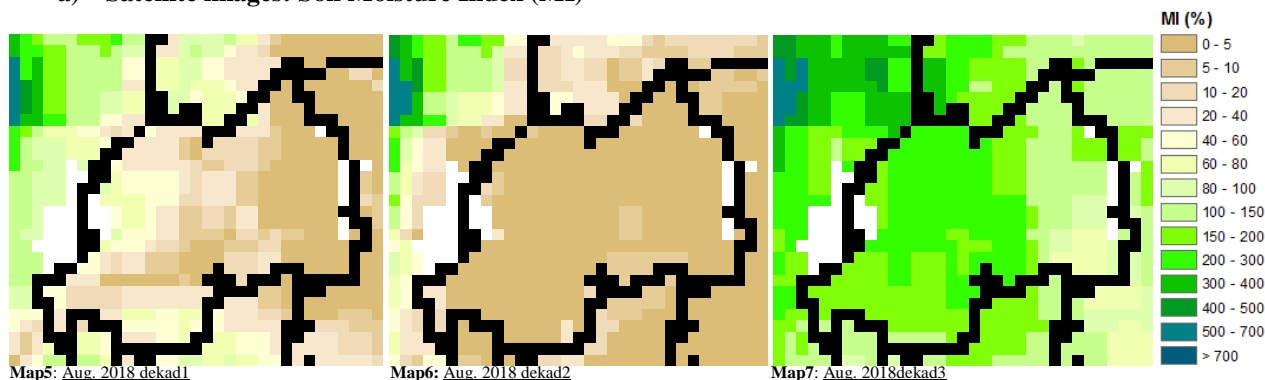


II. Detailed observed Rainfall during the month of August 2018

The month of August 2018 was in the above normal range in comparison with the LTM especially the north and the southwestern tip of the country with 96.7mm and 96.3mm as the highest were recorded at Busogo and Musanze station respectively (see **Map1&2** and **Table1**); for July_2018; the rain patterns show almost the climatological picture (see **Map3&4**)

III. Agricultural impact

a) Satellite images: Soil Moisture Index (MI)



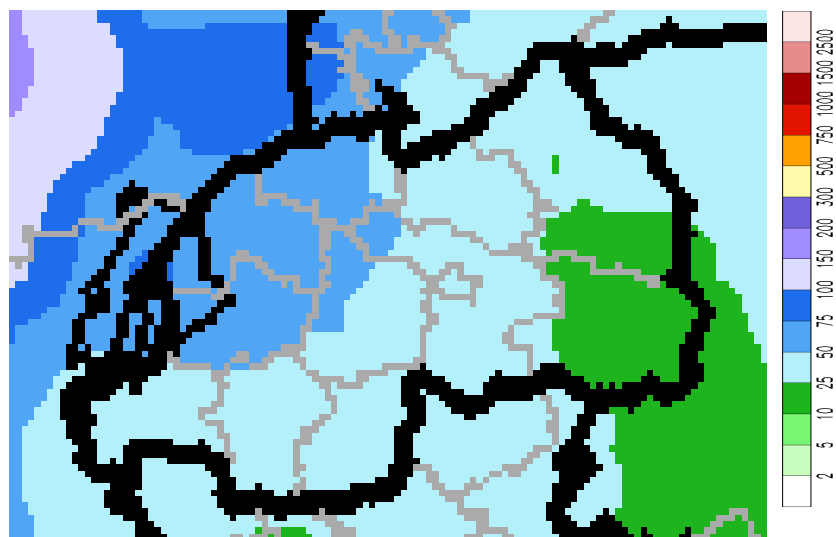
During the month of August 2018, remote sensing analyzed data indicates a considerable increase (see **Map5, 6 & 7**) in moisture content during the 3rd dekad to a favorable situation for most crops resulting from the rains accumulated during this last dekad

b) Rainfall Outlook for September 2018

We expect the month of September 2018 to be wet in most parts of the country; generally in the normal range:

- Kigali City: we expect normal rains (25-75mm)
- Eastern Province: we expect little rains (10-75mm) but also ranging in the normal range as compared with the LTM
- Southern Province: we expect normal rains (25-100mm)
- Western Province: we expect above normal range rains (50-150mm)
- Northern Province: we expect above normal range rains (50-150mm) throughout the month

Amount of rain (in mm) expected for September:



Map7: from day 1 to day 30 September 2018

N.B: This forecast should be used in conjunction with the daily (24-hour), Three (3) and Five (5) days Forecast issued by Meteo Rwanda in the Division of Weather/Climate Services and Applications