



Highlights:

- **The cumulative rainfall** for February_2018; the central experienced little rains that are in the below range while other parts of the country; the rain was normal to above comparing with the Long Term Mean (LTM)
- The northwards and westwards orientation of the rains within this February_2018 induced **a progressive increase in soil moisture** for the mentioned region and also for the whole country in general
- The rainfall during March_2018 is expected to be **normal in comparison with the LTM** across the country

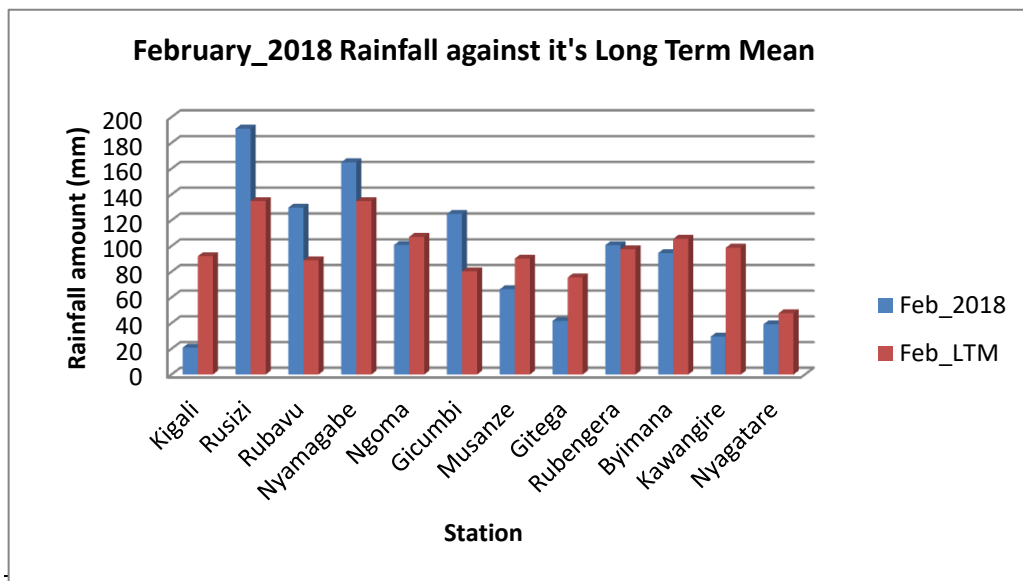
I. Introduction

For the cumulative rainfall in February_2018 we observe the middle-east and central parts of Rwanda to have experienced little rains that are in the below range while other parts of the country; the rain was normal to above comparing with the Long Term Mean (LTM).

a) The table and histogram below indicates the rainfall recorded during February_2018:

Cumulative rainfall (in mm) recorded at different stations

Station	Feb_2018	Feb_LTM
Kigali (Kanombe)	21.0	92.2
Rusizi (Kamembe)	191.1	134.9
Rubavu (Gisenyi)	129.9	88.9
Nyamagabe (Gikongoro)	165.0	134.9
Ngoma (Kibungo)	100.9	107.2
Gicumbi (Byumba)	125.0	80.3
Musanze (Ruhengeri)	66.4	90.3
Gitega	41.8	75.6
Rubengera	100.8	97.6
Byimana	94.6	105.7
Kawangire	29.6	98.8
Nyagatare	39.1	47.7

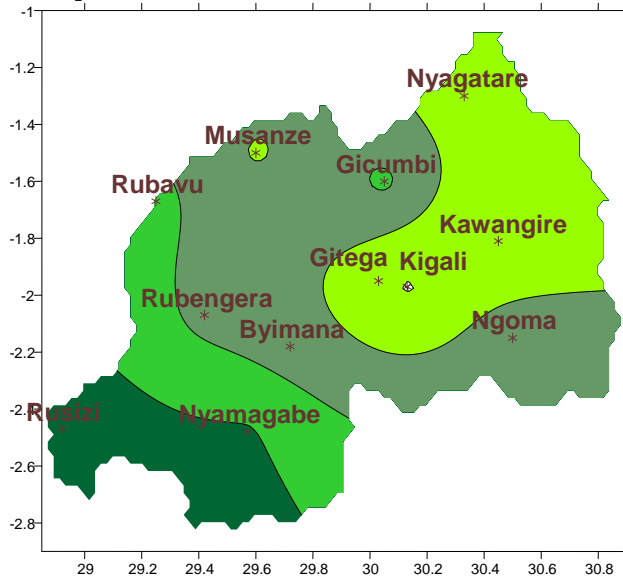


Plot1

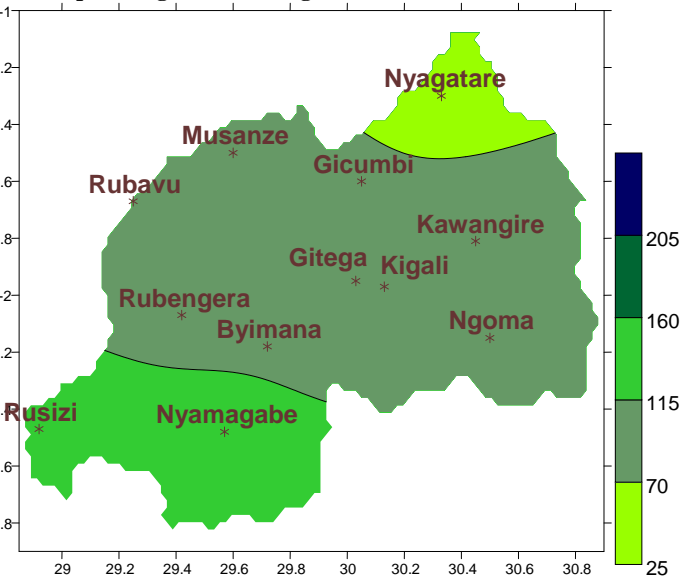
Table1

b) **Rainfall analysis:** The maps “**Map 1 and 2**” below show the cumulative rainfall recorded during February_2018 and the long term mean (LTM) of cumulative rainfall for the same period
 The maps “**map 3 and 4**” show the cumulative rainfall recorded during January_2018 the long term mean (LTM) of cumulative rainfall for the same period

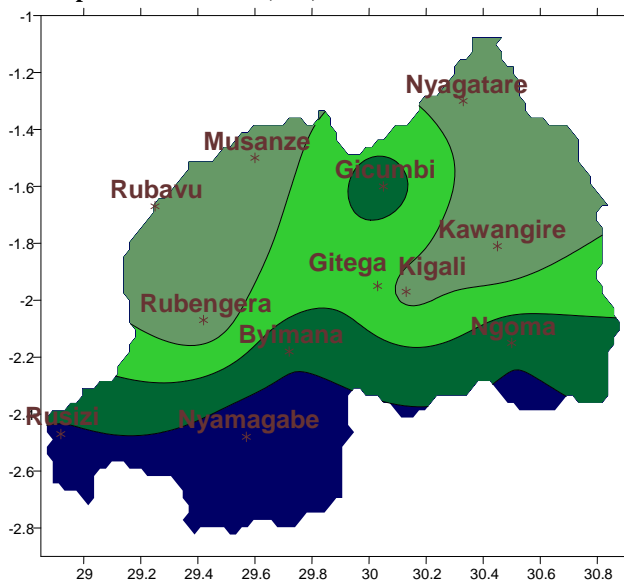
Map1: Total Rainfall (mm): Feb_2018



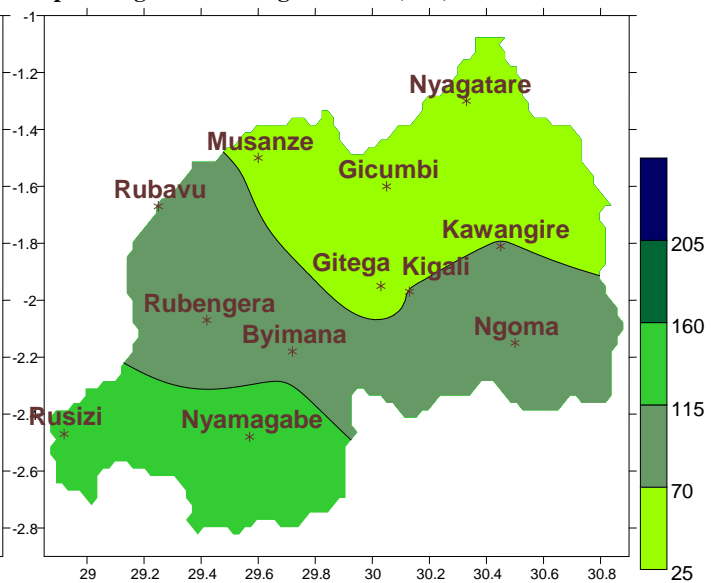
Map2: Long Term Average Rainfall (mm): Feb_LTM



Map3: Total Rainfall (mm): Jan_2018



Map4: Long Term Average Rainfall (mm): Jan_LTM

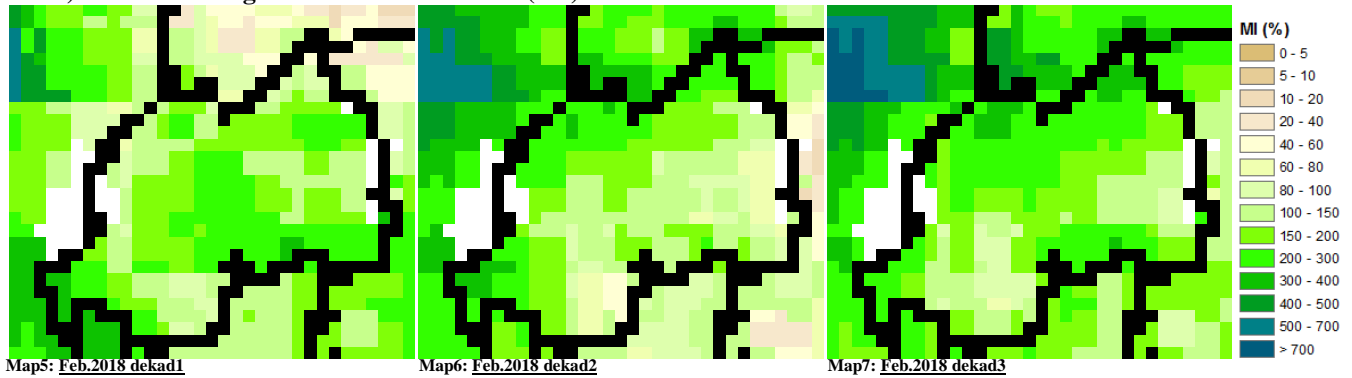


II. Detailed observed rainfall during the February_2018

During February_2018; except central west; all central part of the country experienced little rains that are in the below range while the remaining part had rains that is in the normal to above range comparing with the Long Term Mean (LTM) at each site (see **Map1&2**). For the cumulative rainfall for January_2018 we observe an above normal range country wide with high rainfall amount over central and south; stretching from the east to the west with high values of rainfall that exceeded 100mm at most of the stations; elsewhere within the country (see **Map3&4**)

III. Agricultural impact

a) Satellite images: Soil Moisture Index (MI)



During February_2018 the satellite derived moisture index showed an increased for dekad2 and dekad3 as results of rainfall events that occurred during the month of February (**Map 5, 6&7**; indicate the first, second and third dekad respectively); especially the northern and western parts which have experienced more rains compared with the rest of the country

b) Rainfall forecast for March_2018

The rainfall during March_2018 is expected to be normal in comparison with the LTM across the country; where the southeast is expected to have little rains while the northwest and south-western parts are expected to have increased rainfall compared to the rest of the country.

N.B: This forecast should be used in conjunction with the daily (24-hour), Three (3), Five (5) and Seven (7) days forecasts issued by the Rwanda Meteorology Agency (Meteo Rwanda)