



**Highlights:**

- **The overall cumulative rainfall** for July 2017 was enhanced in south and south-western parts but elsewhere in the country was below the Long Term Mean (LTM).
- **Satellite derived soil moisture index shows a maintained dry soil** for the three consecutive dekads of July\_2017
- **The rainfall during August 2017** is expected to occur country wide especially in northern and western parts of the country but rest of the country will remain with moderate conditions compared to climatology.

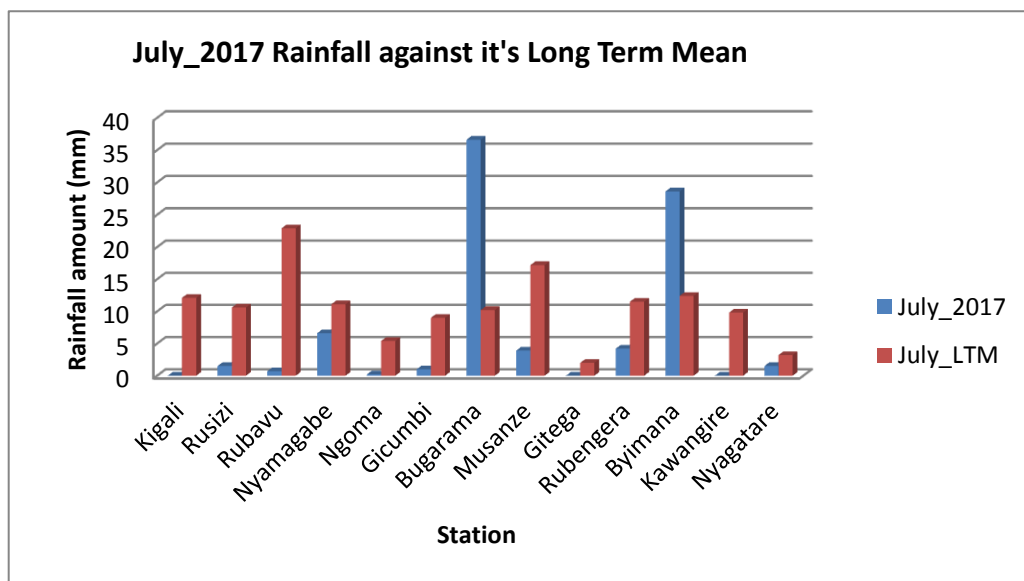
**I. Introduction**

The rainfall pattern for July\_2017 was generally enhanced at stations of Byimana (southern part) and Bugarama (south-western part) compared to the Long Term Mean (LTM) and at normal to below range elsewhere within the country.

a) The table and histogram below indicates the rainfall recorded during July 2017 against the cumulative LTM for July:

**Cumulative rainfall (in mm) recorded at different stations**

Station	July_2017	July_LTM
Kigali	NT	12.1
Rusizi (Kamembe)	1.5	10.6
Rubavu (Gisenyi)	0.7	22.9
Nyamagabe (Gikongoro)	6.6	11.1
Ngoma (Kibungo)	0.2	5.4
Gicumbi (Byumba)	1.0	9.0
Bugarama	36.6	10.2
Musanze (Ruhengeri)	3.9	17.2
Gitega	0.0	2.0
Rubengera	4.2	11.5
Byimana	28.6	12.4
Kawangire	0.0	9.8
Nyagatare	1.5	3.2



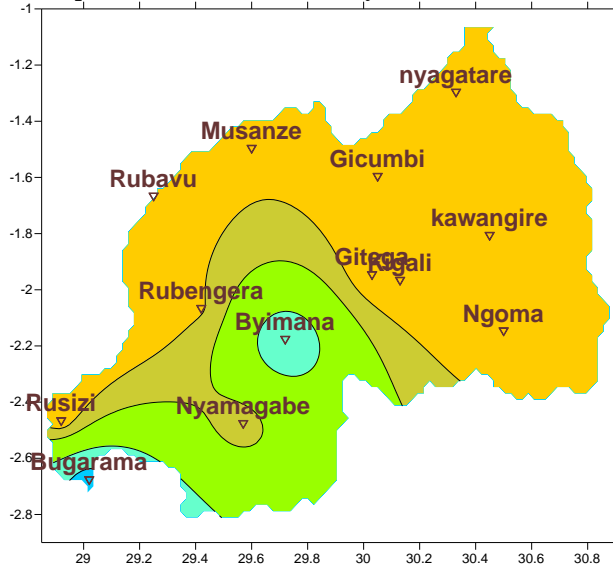
*Plot1*

*Table1*

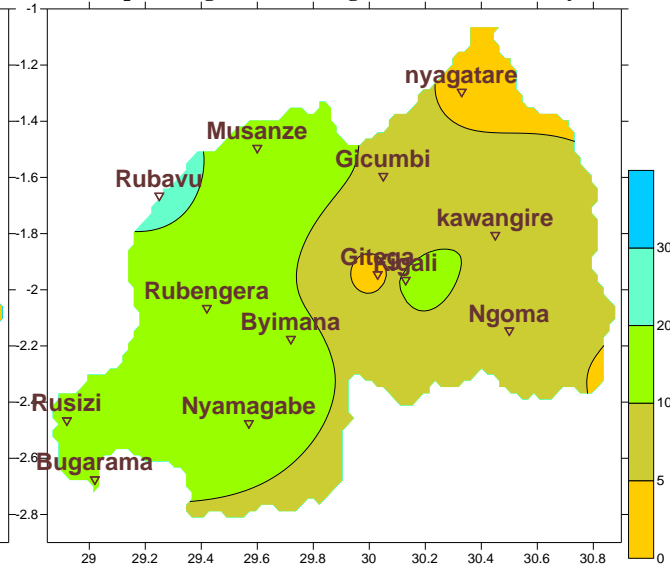
b) **Rainfall analysis:** The maps “**Map 1 and 2**” below show the cumulative rainfall recorded during July 2017 and the cumulative LTM for the same period.

The maps “**map 3 and 4**” show the cumulative rainfall recorded during June 2017 and the cumulative LTM for the same period.

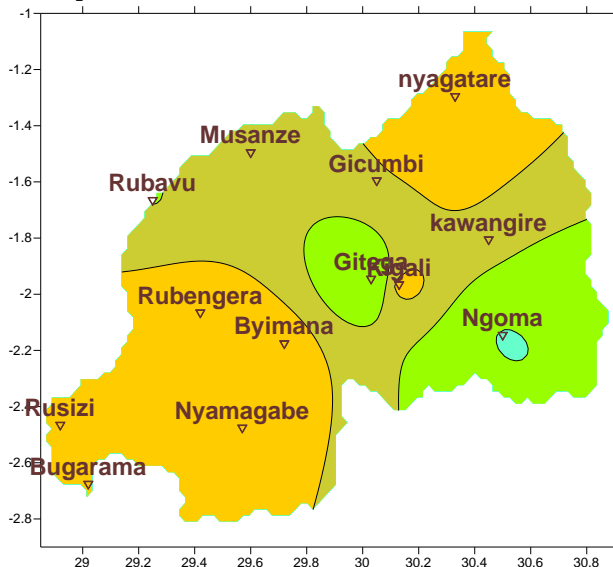
**Map1: Total Rainfall (mm): July\_2017**



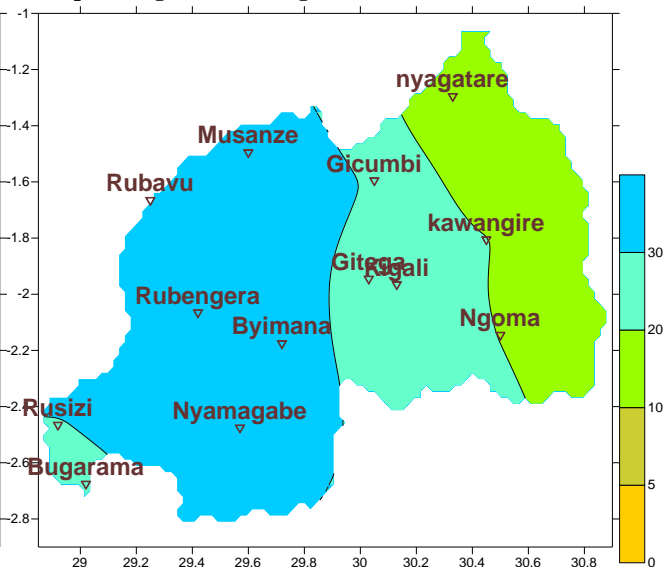
**Map2: Long Term Average Rainfall (mm): July\_LTM**



**Map3: Total Rainfall (mm): June\_2017**



**Map4: Long Term Average Rainfall (mm): June\_LTM**



## II. Detailed observed rainfall during the July 2017

The July\_2017 was generally below the range of the LTM except for two station Byimana and Bugarama that recorded above the LTM (see **Map1&2**); for the month of June\_2017 the cumulative rainfall for June\_2017 was similar to LTM records for the region in the central and south-east parts of the country; while elsewhere in the country the observations were within the range of LTM and below (see **Map3&4**), the maps for June presents more rainfall amounts as opposed to July which is a dry month of the year.

**a) Eastern Province; Northern Province and Kigali City**

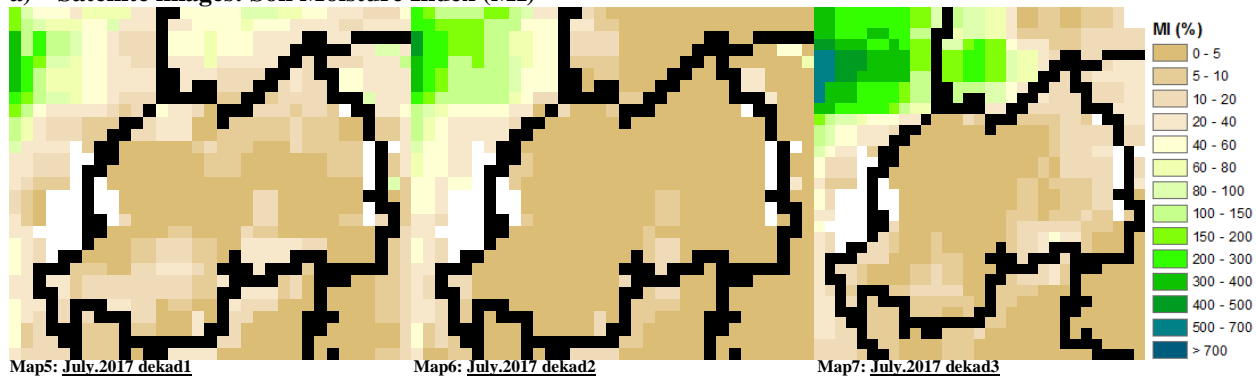
All representing stations records were below the LTM (see **Table1** and **Map1&2**)

**b) Southern Province and Western Province**

Except the extreme west (mostly all the stations of the Western Province except Bugarama station) nearly the rest of the stations recorded below LTM; (see **Table1** and **Map1&2**)

**III. Agricultural impact.**

**a) Satellite images: Soil Moisture Index (MI)**



During July 2017 the satellite derived moisture index was reduced as a result of the persistent dry conditions across the country during this period (see **Map 5, 6&7**).

The weather pattern during August\_2017 is expected to be wetter than July\_2017 especially towards its end (end August) but it will still range within the LTM condition for this period.

Farmers are advised to keep in place supplementary measures which will support their farming practices.

**Rainfall forecast for July\_2017**

During August 2017; we expect a slight very light rain as opposed to the month of July\_2017 but within the range of LTM.

**N.B: This forecast should be used in conjunction with the daily (24-hour), Three (3), Five (5) and Seven (7) days forecasts issued by the Rwanda Meteorology Agency (Meteo Rwanda)**