



Highlights:

- **The overall cumulative rainfall** for dekad2_June_2017 there was no rainfall recorded in the whole country during the second dekad of June.
- The soil moisture index is reducing due to the dry conditions prevailing during the month of June.
- The weather pattern during the third dekad of June_2017 shows dry conditions will continue over most parts of the country.

I. Introduction

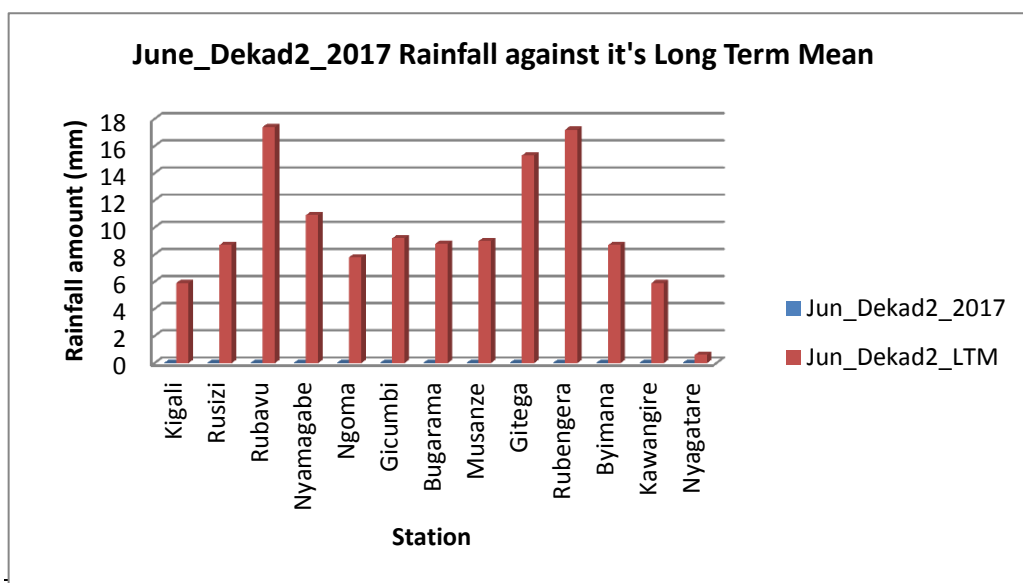
The whole country experienced dry weather conditions country wide, where all stations recorded no rainfall and it was below the Long-Term Mean (LTM).

a) The table and histogram below indicates the LTM rainfall recorded during dekad2_June_2017 and what prevailed during second dekad of June which was null.

Cumulative rainfall (in mm) recorded at different stations

Station	Jun_Dekad2_2017	Jun_Dekad2_LTM
Kigali	NT	5.9
Rusizi (Kamembe)	NT	8.7
Rubavu (Gisenyi)	NT	17.4
Nyamagabe (Gikongoro)	0.0	10.9
Ngoma (Kibungo)	NT	7.8
Gicumbi (Byumba)	NT	9.2
Bugarama	NT	8.8
Musanze (Ruhengeri)	NT	9.0
Gitega	NT	15.3
Rubengera	NT	17.2
Byimana	NT	8.7
Kawangire	0.0	5.9
Nyagatare	NT	0.6

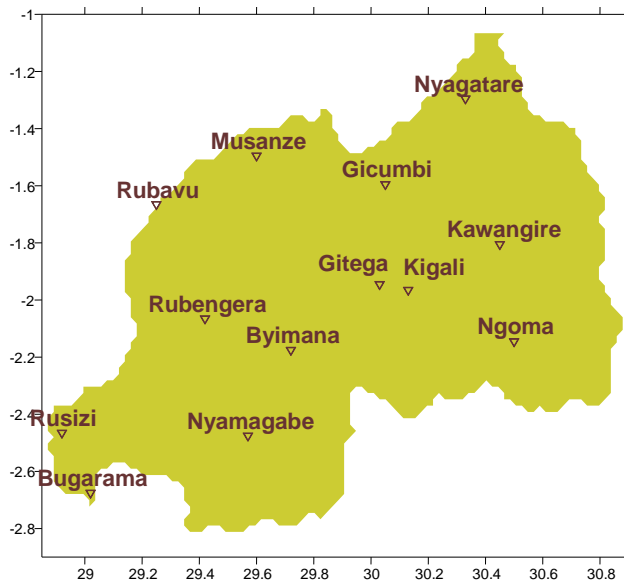
Table1



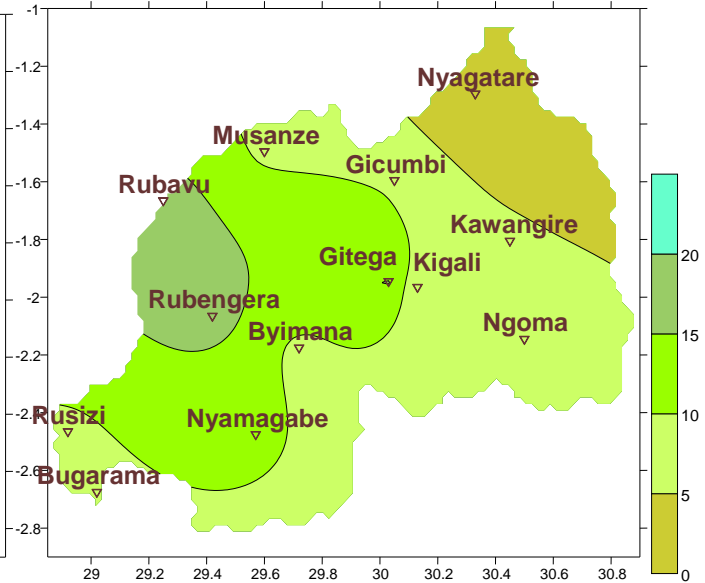
Plot1

b) **Rainfall analysis:** The maps “**Map 1 and 2**” below show the cumulative rainfall recorded during dekad2_June_2017 and the cumulative LTM rainfall for the same period. The maps “**map 3 and 4**” show the cumulative rainfall recorded during dekad1_June_2017 and the cumulative LTM rainfall for the same period.

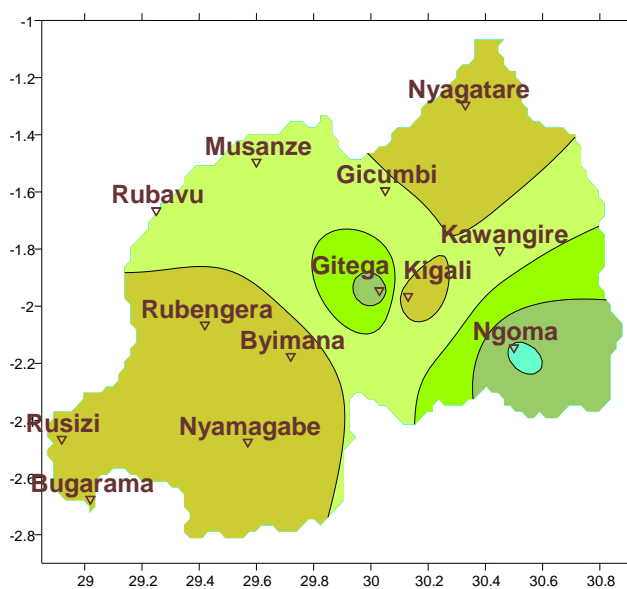
Map1: Total Rainfall (mm): dekad2_June_2017



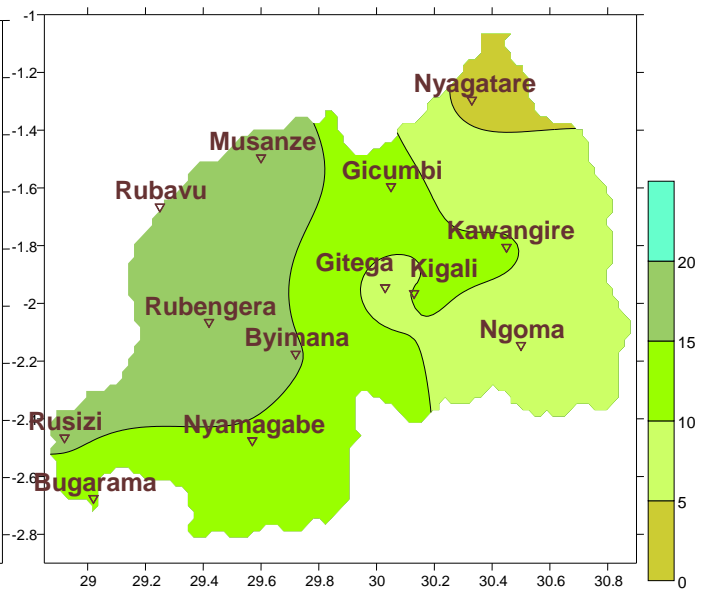
Map2: Long Term Average Rainfall (mm): dekad2_June_LTM



Map1: Total Rainfall (mm): dekad1_June_2017



Map2: Long Term Average Rainfall (mm): dekad1_June_LTM

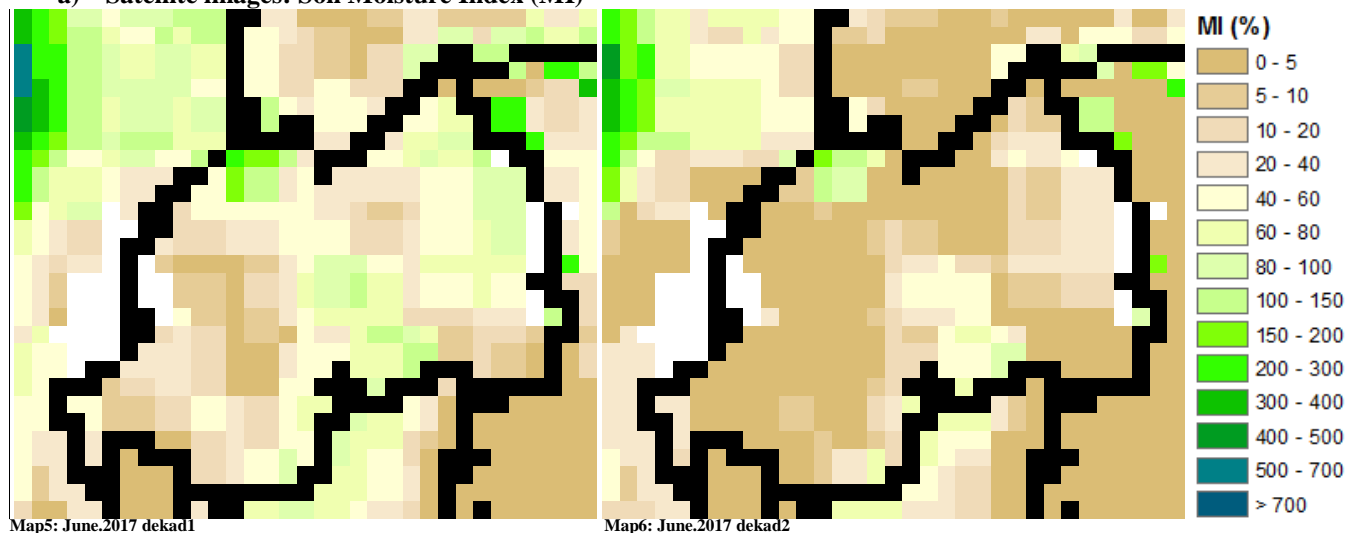


II. Detailed observed rainfall during the dekad2_June_2017

During dekad2_June_2017; the weather pattern showed dry weather conditions country wide which was far below the LTM for the same period (**Map1&2** and **Table1**). The records during dekad1_June_2017 were generally below the LTM except for two stations Ngoma and Gitega that registered rainfall which was above the LTM for the same period (see **Map3&4**)

III. Agricultural impact.

a) Satellite images: Soil Moisture Index (MI)



The satellite derived moisture index continue to show gradual decrease of moisture content in dekad2 as result of dry weather conditions occurring during the month of June (**Map 5&6**)

The weather pattern during the third dekad of June_2017 indicate that most parts of the country will continue to experience dry conditions except northern and western provinces where cloudy conditions will occur but with no rain. Farmers are advised to put in place supplementary measures.

Rainfall forecast for dekad3 of June_2017

The weather pattern during the third dekad of June_2017 generally shows dry conditions over most parts of the country.

N.B: This forecast should be used in conjunction with the daily (24-hour), Three (3), Five (5) and Seven (7) days forecasts issued by the Rwanda Meteorology Agency (Meteo Rwanda)