



**Highlights:**

- **The cumulative rainfall** for June\_2018 was normal to above range in comparison with the Long Term Climatological Mean (LTM) at all stations with the northwest being more wet compared to the rest of the country
- **An gradually decrease in soil moisture** was observed across many parts the country
- The weather during July\_2018 is expected to be **less wet than June\_2018** with dry weather being dominant for the whole country

**I. Introduction**

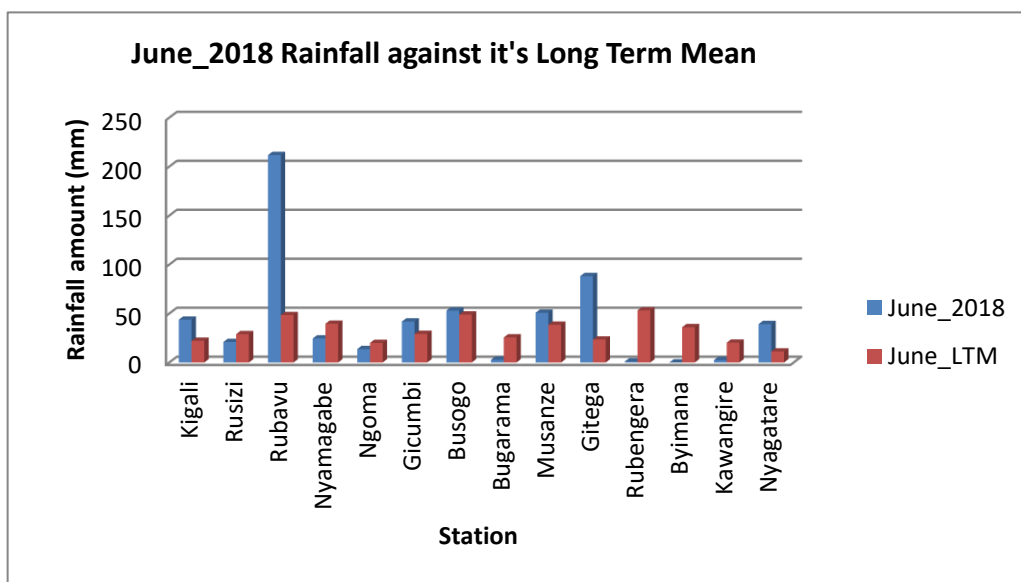
The rainfall during this period June\_2018 was normal to above range in comparison with the Long Term Climatological Mean (LTM) at all stations with the northwest being more wet compared to the rest of the country

a) The table and histogram below indicates the rainfall recorded during June\_2018 and its Long Term Mean (LTM):

**Cumulative rainfall (in mm) recorded at different stations**

Station	Jun_2018	Jun_LTM
Kigali (Kanombe)	43.7	22.1
Rusizi (Kamembe)	20.9	28.9
Rubavu (Gisenyi)	211.8	48.4
Nyamagabe (Gikongoro)	24.5	39.5
Ngoma (Kibungo)	13.6	19.9
Gicumbi (Byumba)	41.8	29.1
Busogo	53.0	48.9
Bugarama	2.8	25.6
Musanze (Ruhengeri)	50.8	38.5
Gitega	88.2	23.4
Rubengera	1.0	53.2
Byimana	0.0	36.0
Kawangire	2.4	20.2
Nyagatare	39.2	11.2

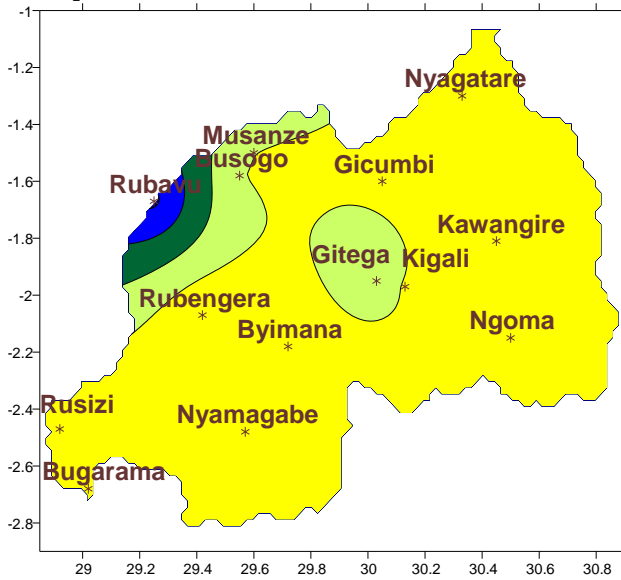
*Table1*



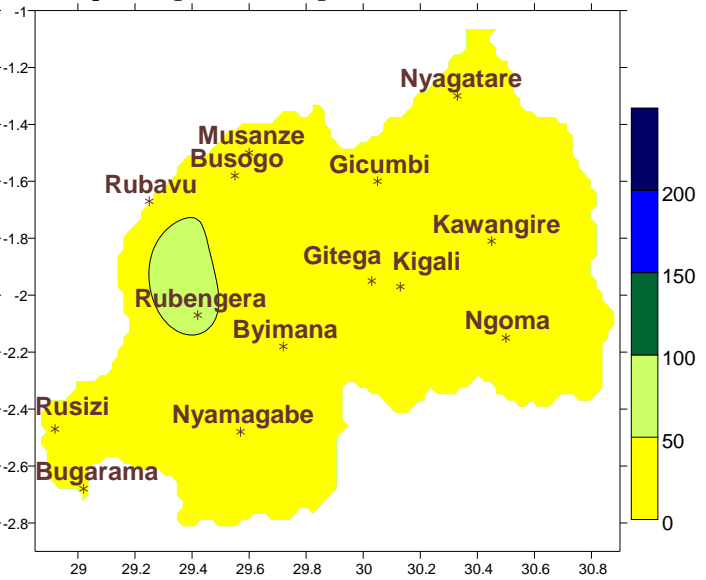
*Plot1*

b) **Rainfall analysis:** The maps “**Map 1 and 2**” below show the cumulative rainfall recorded during June\_2018 and the long term mean (LTM) of cumulative rainfall for the same period  
 The maps “**map 3 and 4**” show the cumulative rainfall recorded during May\_2018 the long term mean (LTM) of cumulative rainfall for the same period

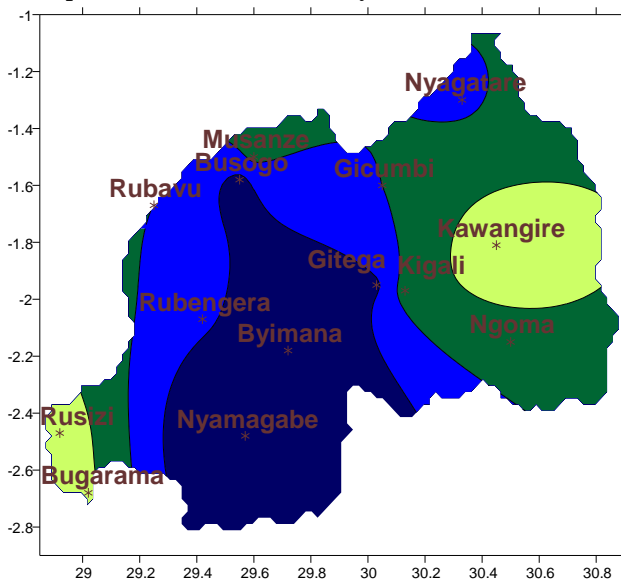
**Map1: Total Rainfall (mm): Jun\_2018**



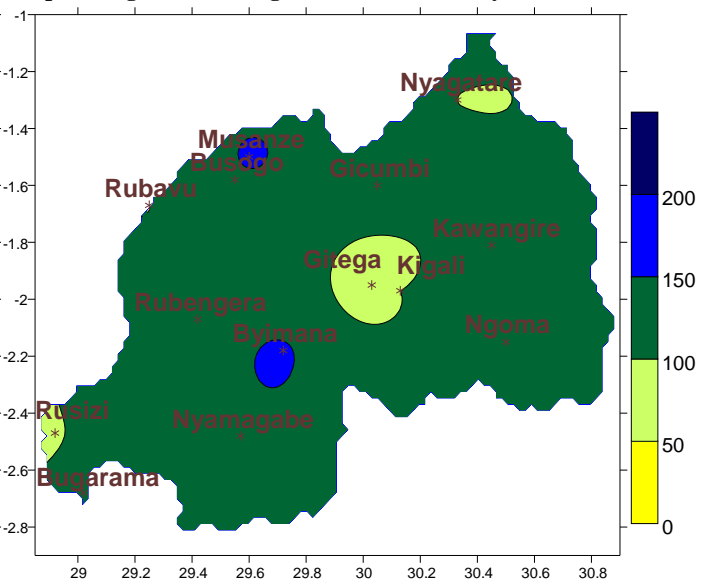
**Map2: Long Term Average Rainfall (mm): Jun\_LTM**



**Map3: Total Rainfall (mm): May\_2018**



**Map4: Long Term Average Rainfall (mm): May\_LTM**

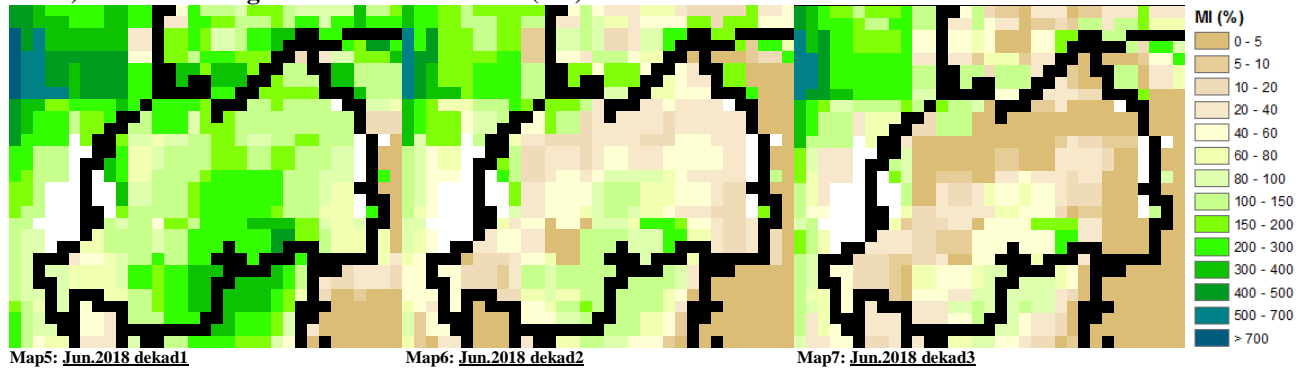


## II. Detailed observed rainfall during June\_2018

The rainfall during June\_2018 was normal to above range in comparison with the Long Term Climatological Mean (LTM) at all stations with the northwest being more wet compared to the rest of the country (see **Map1&2** and **Table1**). For the cumulative rainfall for May\_2018; the rains became high at some localized stations of the central & south but was less over some parts of west and east; while elsewhere within the country; the rains were ranging in the normal situation comparing with the LTM (see **Map3&4**)

### III. Agricultural impact.

#### a) Satellite images: Soil Moisture Index (MI)

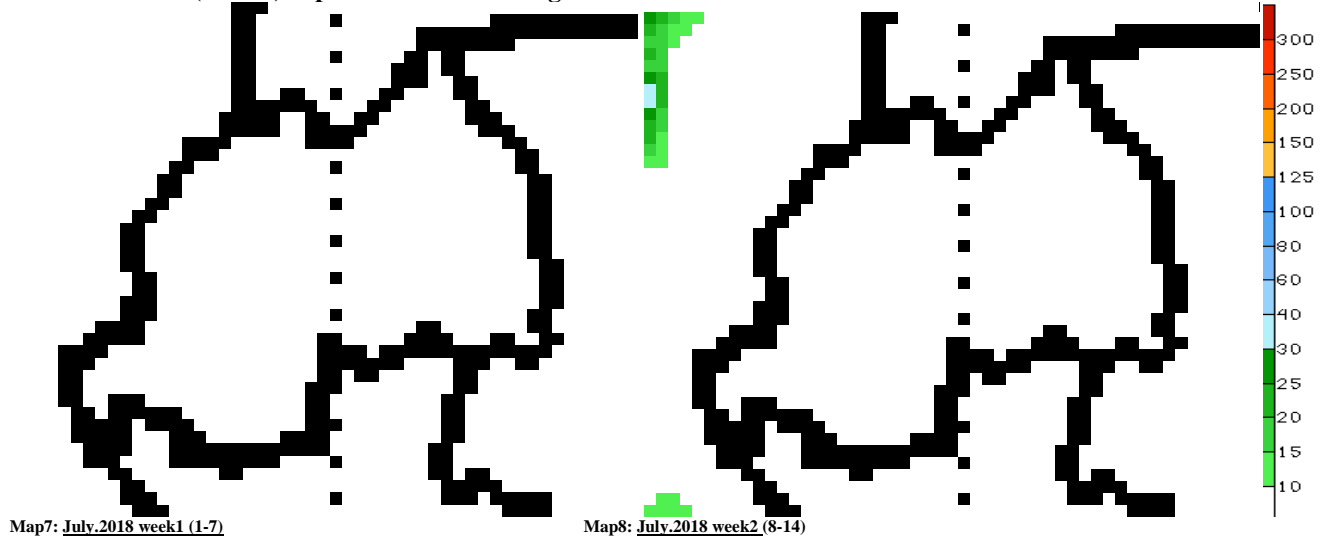


During June\_2018 the satellite derived moisture index showed decrease in soil moisture from dekad1 to dekad3 resulting from dry weather conditions (**Map 5, 6&7**; indicate the first, second and third dekad respectively)

#### b) Rainfall forecast for July\_2018

The weather during July\_2018 is expected to be less wet than June\_2018 with dry weather being dominant for the whole country

#### Amount of rain (in mm) expected for the coming 2 weeks



**N.B:** This forecast should be used in conjunction with the daily (24-hour), Three (3), Five (5) and Seven (7) days forecasts issued by the Rwanda Meteorology Agency (Meteo Rwanda)