



**Highlights:**

- **The overall cumulative rainfall** for dekad1 June 2019; was observed to be in the above normal category over the north, west, south, west of Kigali City and north Eastern Province while the rest of the country ranges in the below normal category as compared with the LTM (Long-Term Mean);
- The soil moisture content kept on decreasing especially over the south, south-east and south-west resulting from lower rainfall amount received during this last dekad over those mentioned regions.
- The rainfall during second dekad of June 2019; light rainfall is expected in north-western parts near volcanic areas and in southern parts near Nyungwe forest between 11<sup>th</sup> and 18<sup>th</sup> June 2019. We also expect light rainfall in Western province near Lake Kivu between 19<sup>th</sup> and 26<sup>th</sup> June 2019.

**I. Introduction**

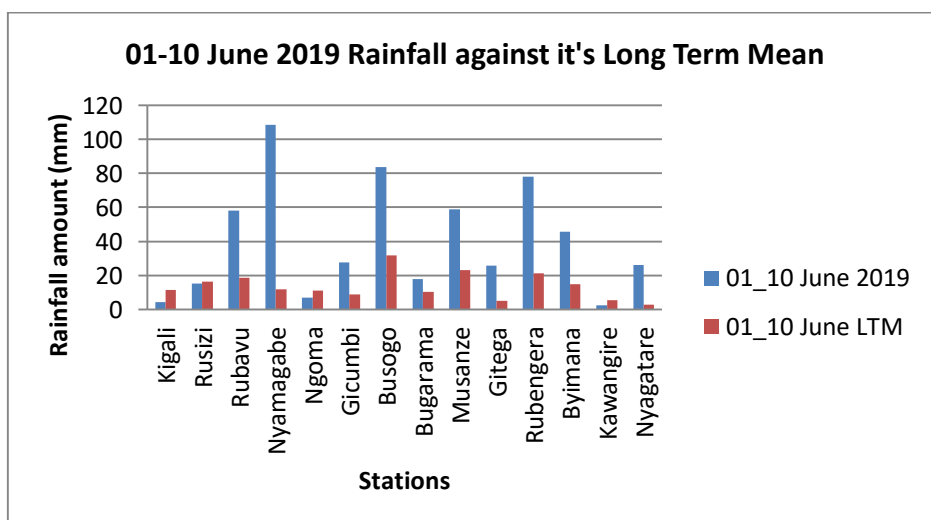
The 1<sup>st</sup> dekad of June 2019; shows that the cumulative rainfall over the north; west, south, west of Kigali City and north Eastern Province are in the above normal range while the rest of the country is in the below normal category as compared with the LTM (Long-Term Mean)

a) The table and histogram below indicates the rainfall recorded during dekad1 June 2019:

**Cumulative rainfall (in mm) recorded at different stations**

Stations	01-10 June 2019	01-10 June LTM
Kigali	4.3	11.2
Rusizi	15.1	16.2
Rubavu	58.1	18.5
Nyamagabe	108.6	11.8
Ngoma	7	11
Gicumbi	27.4	8.9
Busogo	83.6	31.7
Bugarama	17.6	10.1
Musanze	58.7	22.9
Gitega	25.6	4.9
Rubengera	77.9	21.2
Byimana	45.8	14.9
Kawangire	2.3	5.4
Nyagatare	26.2	2.6

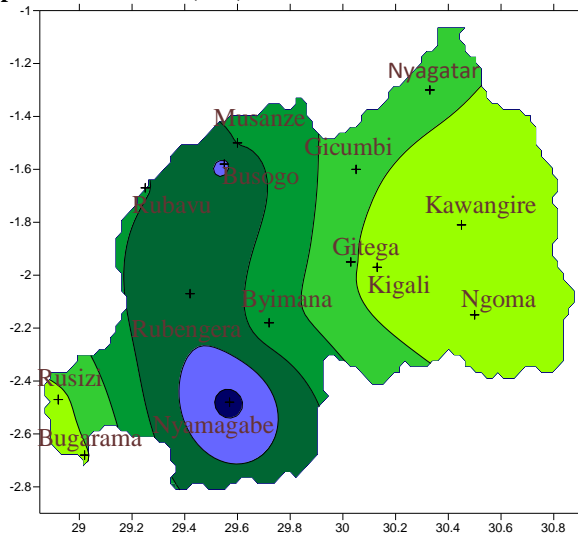
*Table1*



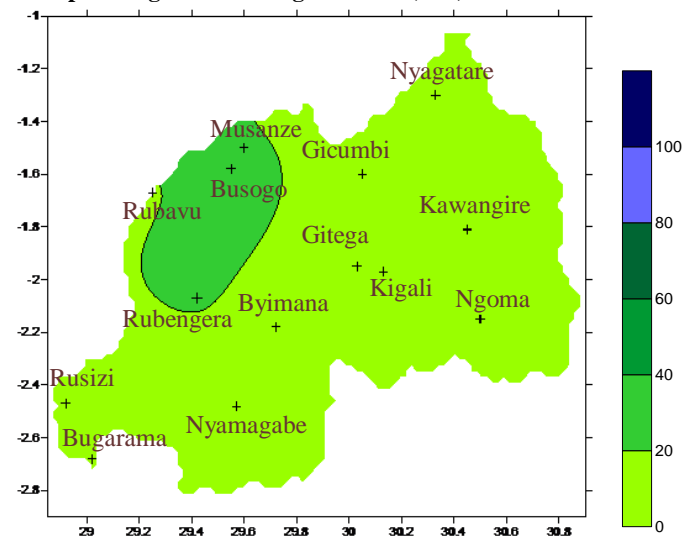
*Plot1*

b) **Rainfall analysis:** The maps “**Map 1 and 2**” below show the cumulative rainfall recorded during dekad1 June 2019 and the cumulative rainfall for the same period. The maps “**map 3 and 4**” show the cumulative rainfall recorded during dekad3 May 2019 and the cumulative rainfall for the same period.

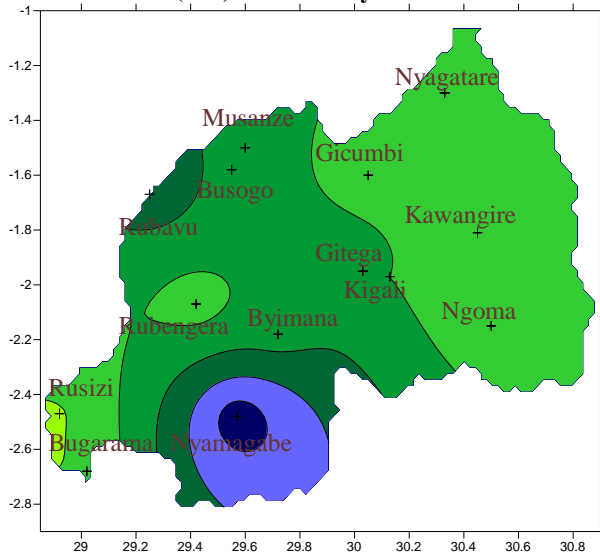
**Map1: Total Rainfall (mm): dekad1 June 2019**



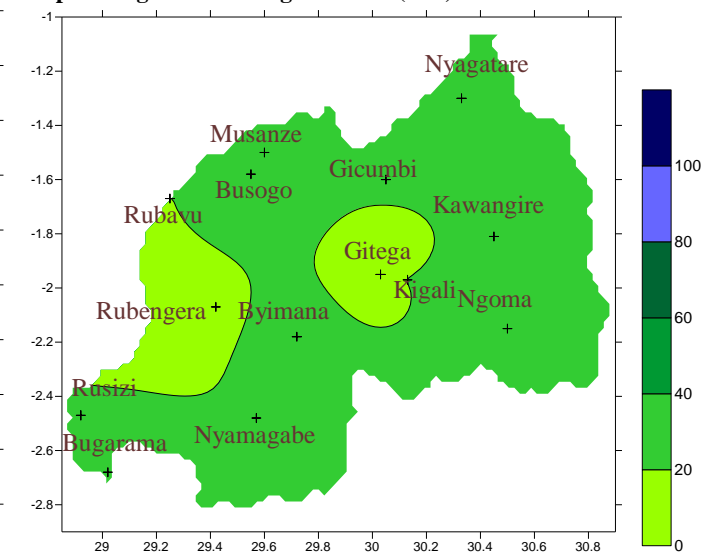
**Map2: Long Term Average Rainfall (mm): dekad1 June LTM**



**Map1: Total Rainfall (mm): dekad3 May 2019**



**Map2: Long Term Average Rainfall (mm): dekad3 June LTM**

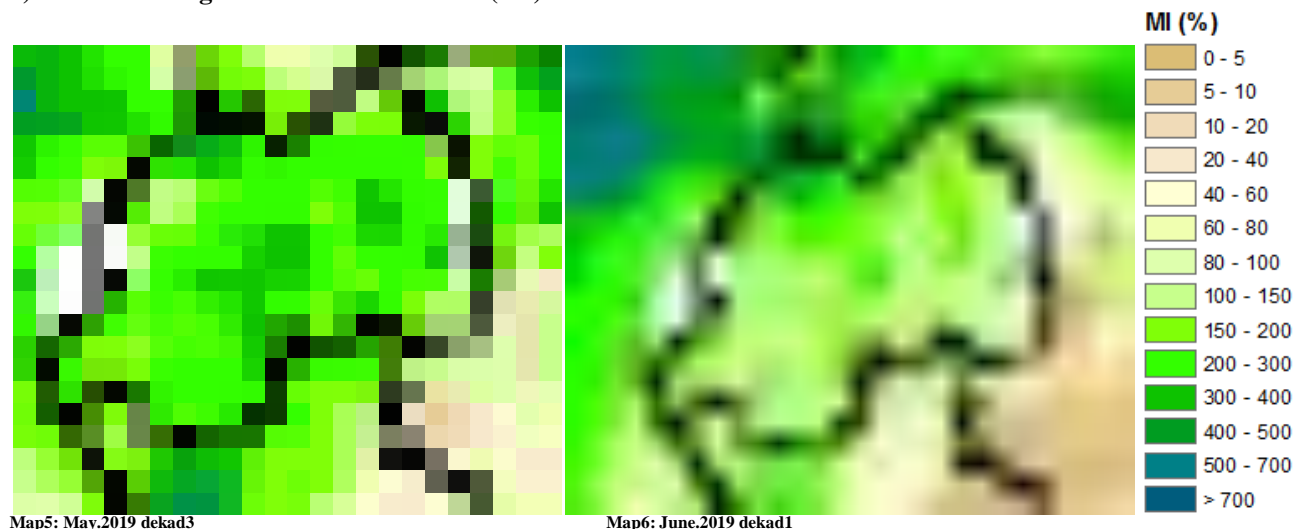


## II. Detailed observed rainfall during the dekad2 May\_2019

During the dekad1 June 2019; we observe that the cumulative rainfall amounts over the north; west, south, west of Kigali City and north Eastern Province are in the above normal range while the rest of the country is in the below normal category as compared with the LTM (Long-Term Mean; where the highest value was observed at Nyamagabe station with 108.6mm of rainfall; see **Map1&2** and **Table1**); while the rainfall during dekad3 May 2019 we observe high rainfall amount over stations of the west, south, most parts of Northern Province and Kigali City; and less was observed over the east and Gicumbi district as compared to what have been observed countrywide (see **Map3&4**).

### III. Agricultural impact

#### a) Satellite images : Soil Moisture Index (MI)



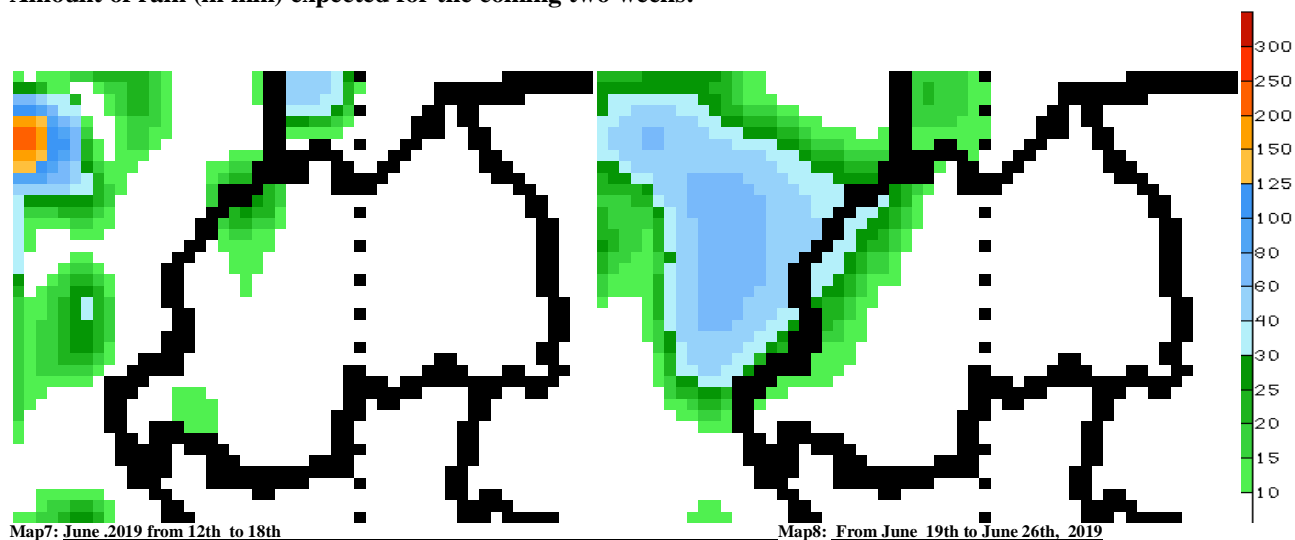
Observing the dekad3 May 2019 to dekad1 June 2019 satellite derived moisture index; kept on showing dry soil increasingly as a result of the dry weather condition observed especially over the south, south-east, and south-west (see **Map5&6**)

#### b) Rainfall forecast for dekad2 June 2019

- The rainfall during second dekad of June 2019; we expect light rainfall in north – western parts near volcanic areas and small part of south near Nyungwe forest within the first week. In second week of dekad, we expect less rainfall in Western province near Lake Kivu.

The rainfall during second dekad of June 2019; light rainfall ranging from 10mm to 15mm is expected in north-west parts near volcanic areas and in the small part of south near Nyungwe forest from 12<sup>th</sup> to 18<sup>th</sup> June 2019 ; we expect light rainfall ranging from 10mm to 40mm in Western Province near Lake Kivu from 19<sup>th</sup> to 26<sup>th</sup> June 2019.

#### Amount of rain (in mm) expected for the coming two weeks:



**N.B:** This forecast should be used in conjunction with the daily (24-hour), Three (3), Five (5) and Seven (7) days forecasts issued by the Rwanda Meteorology Agency (Meteo Rwanda)