



Highlights:

- **The overall cumulative rainfall** for June 2017 was below Long Term Mean (LTM) over most parts of the country but for the central and southeast parts at Gitega station and Ngoma station respectively recorded rainfall which was within the range of LTM.
- **Satellite derived soil moisture index showed a general decrease across** the country for the whole month June 2017.
- **The rainfall during July 2017** there is expected to **occur light rain in most places** of the north and west but the rest of the country will remain slightly dry.

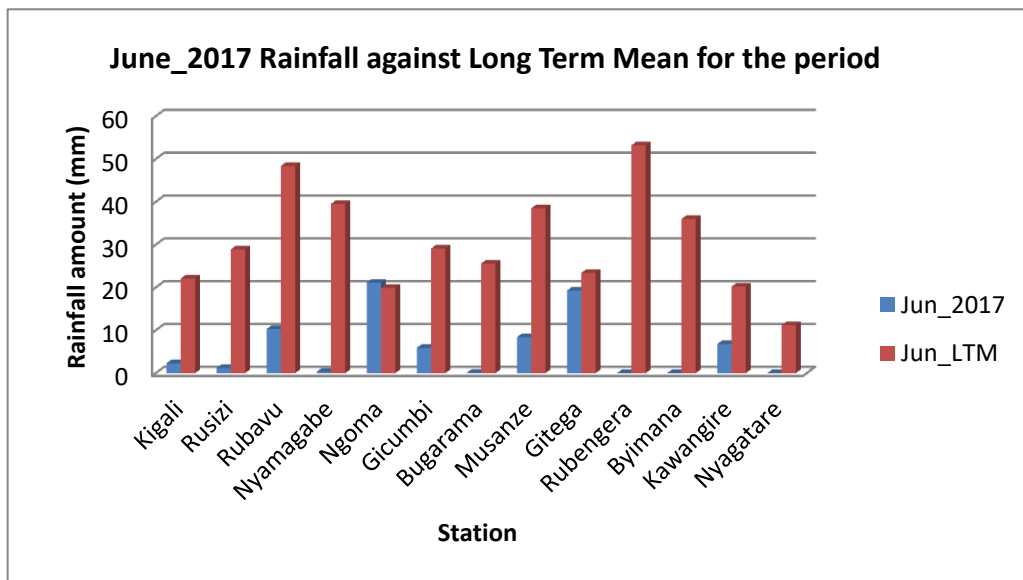
I. Introduction

Parts of the country especially the central (Gitega station) and south-east (Ngoma station) during June 2017 recorded rainfall which was within the range of Long Term Mean (LTM); while elsewhere within the country rainfall was below the LTM.

a) The table and histogram below indicates the rainfall recorded during June 2017 against the cumulative LTM for June:

Cumulative rainfall (in mm) recorded at different stations

Station	Jun_2017	Jun_LTM
Kigali	2.3	22.1
Rusizi (Kamembe)	1.2	28.9
Rubavu (Gisenyi)	10.3	48.4
Nyamagabe (Gikongoro)	0.3	39.5
Ngoma (Kibungo)	21.1	19.9
Gicumbi (Byumba)	5.9	29.1
Bugarama	0.1	25.6
Musanze (Ruhengeri)	8.4	38.5
Gitega	19.3	23.4
Rubengera	0.0	53.2
Byimana	0.0	36.0
Kawangire	6.8	20.2
Nyagatare	0.0	11.2

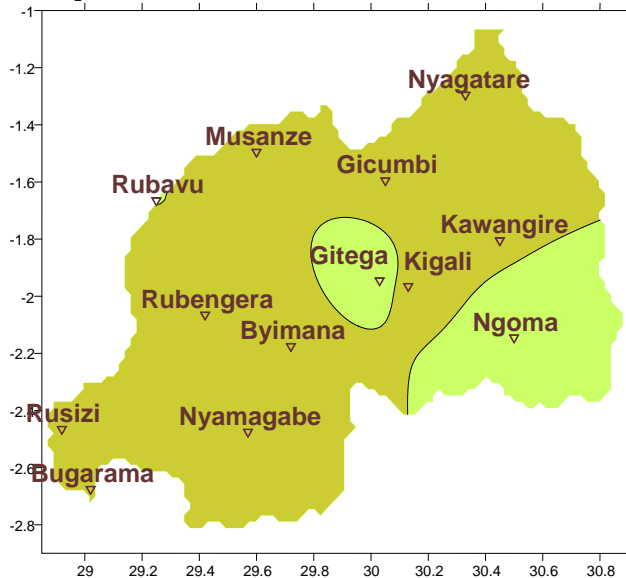


Plot1

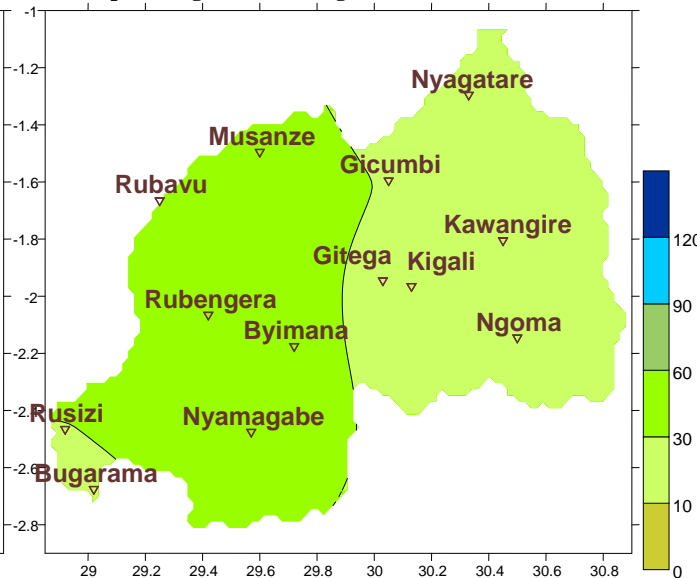
Table1

b) **Rainfall analysis:** The maps “**Map 1 and 2**” below show the cumulative rainfall recorded during June 2017 and the LTM cumulative rainfall for the same period. The maps “**map 3 and 4**” show the cumulative rainfall recorded during June 2017 and the cumulative LTM for the same period.

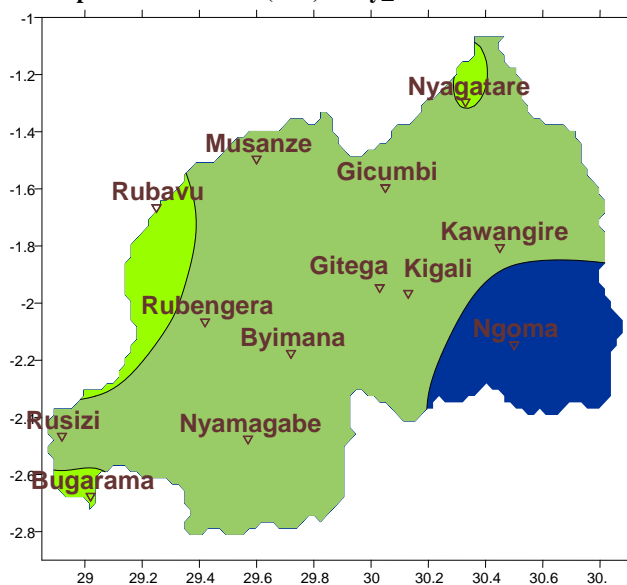
Map1: Total Rainfall (mm): June_2017



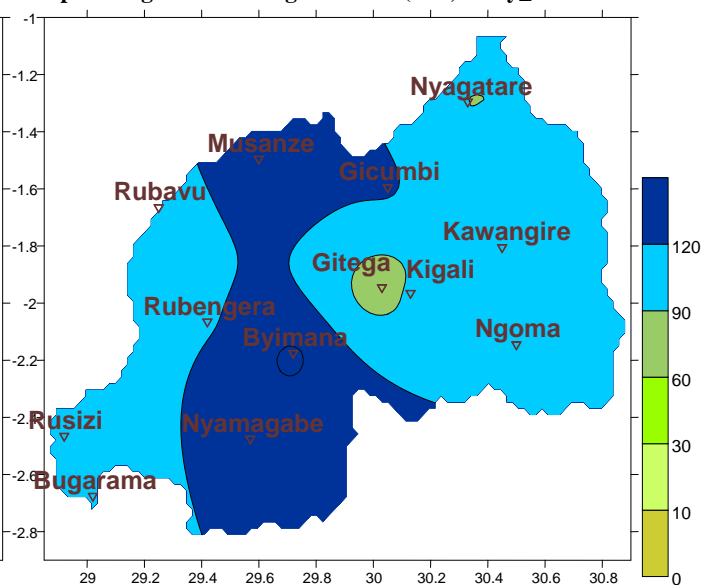
Map2: Long Term Average Rainfall (mm): June_LTM



Map3: Total Rainfall (mm): May_2017



Map4: Long Term Average Rainfall (mm): May_LTM



II. Detailed observed rainfall during the June 2017

Cumulative rainfall for June_2017 was similar to climatology of the region in the central and south-east parts of the country; while elsewhere within the country recorded below the LTM (see **Map1&2**); for the month of May_2017 the cumulative rainfall was slightly enhanced in the south-east; while elsewhere within the country we observed below the LTM (**Map3&4**)

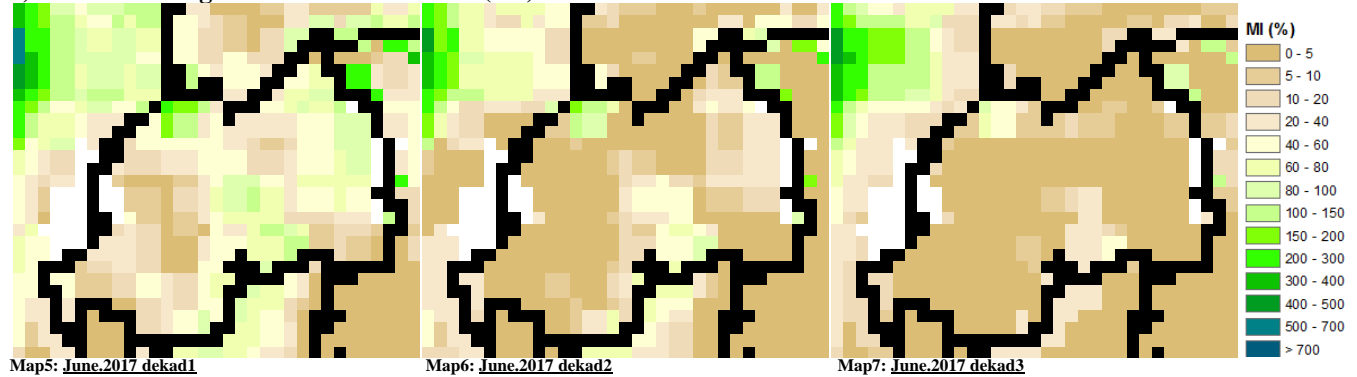
a) Eastern Province

The records show rainfall amount recorded was in the range of the LTM except at Ngoma station where the record was the highest within the country with 21.1mm of rainfall (see **Table1** and **Map1&2**)

Elsewhere within the country; we observed that all representing stations show a similar pattern which is in the below LTM (see **Table1** and **Map1&2**)

III. Agricultural impact.

a) Satellite images: Soil Moisture Index (MI)



During June 2017 the satellite derived moisture index reduced as a result of reduced widespread of rainfall across the country (see **Map 5, 6&7**).

The weather pattern during July_2017 is expected to be slightly dry to compared to June_2017

Farmers are advised to put in place supplementary measures which will support their farming system.

Rainfall forecast for July_2017

During July 2017; very light rain is expected compared to what was observed in June_2017 (North- and Western parts are likely to have more chances of light rains compared to the rest of the country).

N.B: This forecast should be used in conjunction with the daily (24-hour), Three (3), Five (5) and Seven (7) days forecasts issued by the Rwanda Meteorology Agency (Meteo Rwanda)