



## **SEASONAL FORECAST FOR MARCH-APRIL- MAY (MAM) 2025, N°69**

Rwanda Meteorology Agency (METEO RWANDA) is pleased to release the seasonal climate outlook forecast for the March to May (MAM) 2025 rainfall season. The forecasted rains for the season will range between **250-550mm** which is slightly below the Long Term Mean rainfall ranging between 250-650mm.

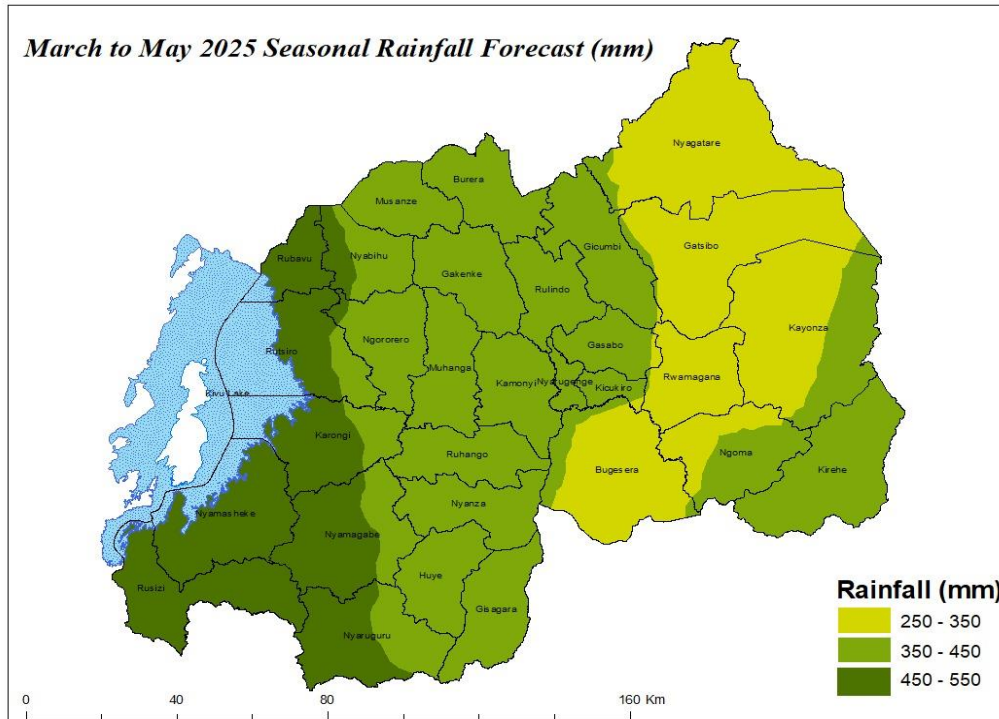
The key factors that influence rainfall during MAM 2025 season are the persistent La Nina conditions in the Pacific Ocean and the Indian Oceanic Dipole (IOD) which remains in the neutral conditions. The analogue years for MAM 2025 seasons are 2017 and 2021.

**Different districts are anticipated to receive various amounts of rainfall as follows:**

**Rainfall ranging between 250 - 350 millimetres** is expected in Gatsibo, Nyagatare, Rwamagana, Bugesera as well as most parts of the Kayonza and western Ngoma Districts.

**Rainfall ranging between 350 - 450 millimetres** is expected over Kirehe and Ngororero Districts, Kigali City, Northern Province, Southern Province except most parts of Nyaruguru and Nyamagabe districts, eastern parts of Nyabihu, Karongi, Rutsiro, Kayonza and Ngoma districts.

**Rainfall ranging between 450 - 550 millimetres** is expected in the Rusizi, Nyamasheke, Rubavu, western parts of Nyabihu, most parts of Rutsiro, Karongi, Nyaruguru and Nyamagabe Districts.



## ONSET AND CESSATION OF MAM 2025 RAINFALL SEASON

The onset of the March to May 2025 rainfall season is expected as follow:

❖ **Between February 10 and 20, 2025:**

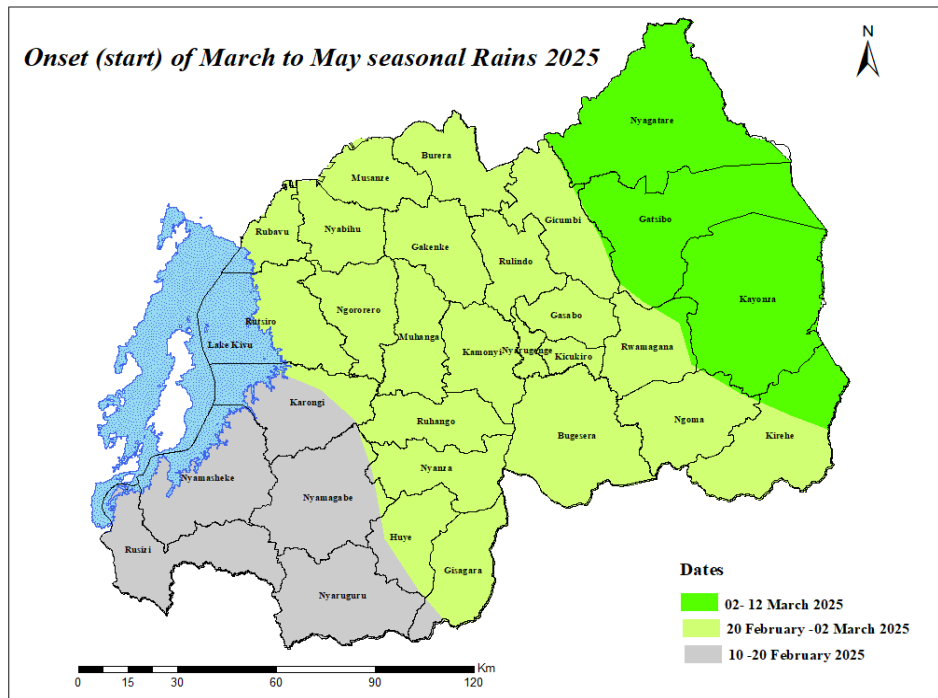
Rainfall is expected to start in the districts of Nyaruguru, Nyamagabe, Nyamasheke, Rusizi, most parts of South-western Karongi, small portion of Huye and Southern parts of Gisagara districts.

❖ **Between February 20 and March 2, 2025:**

Rainfall is anticipated to start in Northern Province, Kigali City, Rubavu, Nyabihu, Rutsiro, Ngororero, Rwamagana, Ngoma, Bugesera, Southern parts of Kirehe, Eastern parts of Karongi, and in Southern Province except in Nyamagabe, Nyaruguru and Southern parts of Huye and Gisagara districts.

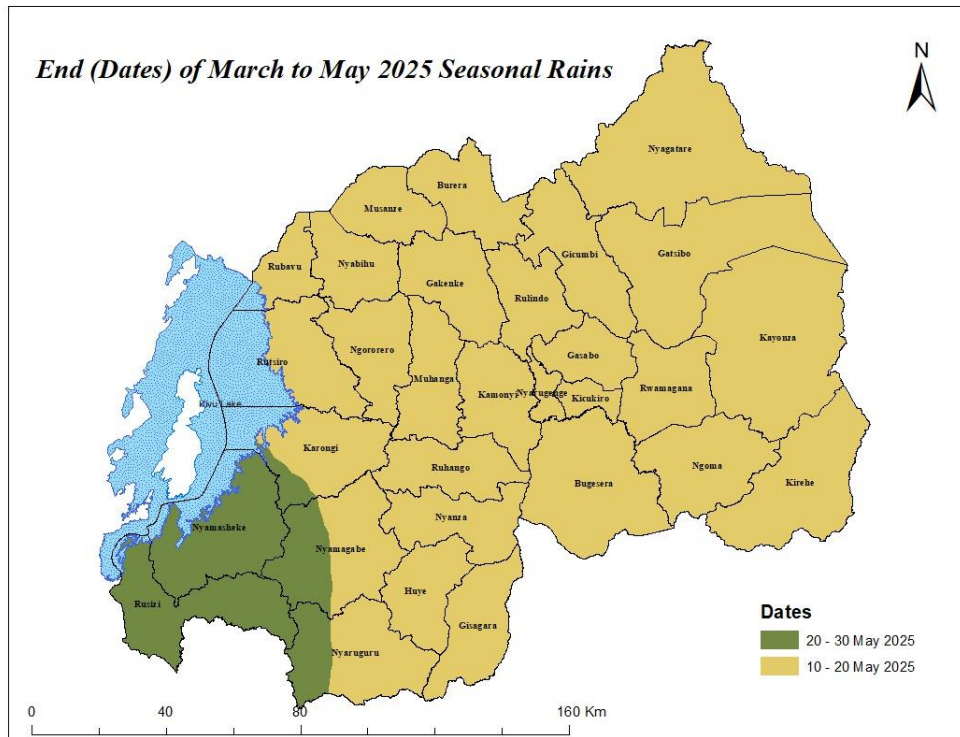
❖ **Between March 2 and 12, 2025:**

Rainfall is expected to start in the districts of Nyagatare, Gatsibo, Kayonza, and northern parts of Kirehe Districts.



**The cessation of the March to May 2025 rainfall season is expected as follow:**

- ❖ **Between 10<sup>th</sup> to 20<sup>th</sup> of May 2025:** The cessation (End of the season) of seasonal rainfall is expected in Kigali City, Eastern Province, Northern Province, Southern Province except western parts of Nyaruguru and Nyamagabe districts, and in Western Province except Nyamasheke, Rusizi and Southern parts of Karongi districts.
- ❖ **Between 20<sup>th</sup> to 30<sup>th</sup> of May 2025:** The cessation is expected in Nyamasheke, Rusizi and Southern parts of Karongi districts and western parts of Nyaruguru and Nyamagabe districts.



**THE FORECASTED RAINFALL AMOUNT, ONSET AND CESSATION DATES OF MAM 2025 IN DIFFERENT PARTS OF THE COUNTRY ARE INDICATED IN THE TABLE BELOW:**



Province	District	Expected Rainfall	Onset dates	Cessation Dates
<b>City of Kigali</b>	Nyarugenge	350-450	20 February-02 March	10-20 May
	Gasabo	350-450	20 February-02 March	10-20 May
	Kicukiro	350-450	20 February-02 March	10-20 May
<b>Northern Province</b>	Musanze	350-450	20 February-02 March	10-20 May
	Burera	350-450	20 February-02 March	10-20 May
	Gicumbi	350-450	20 February-02 March	10-20 May
	Rulindo	350-450	20 February-02 March	10-20 May
	Gakenke	350-450	20 February-02 March	10-20 May
<b>Southern Province</b>	Kamonyi	350-450	20 February-02 March	10-20 May
	Muhanga	350-450	20 February-02 March	10-20 May
	Ruhango	350-450	20 February-02 March	10-20 May
	Nyanza	350-450	20 February-02 March	10-20 May
	Huye	350-450	20 February-02 March	10-20 May
	Gisagara	350-450	20 February-02 March	10-20 May
	Eastern parts of Nyamagabe	350-450	10-20 February	10-20 May
	Most parts of Nyamagabe	450-550	10-20 February	20-30 May



	Eastern parts of Nyaruguru	350-450	10-20 February	10-20 May
	Most parts of Nyaruguru	450-550	10-20 February	20-30 May

<b>Eastern Province</b>	Western parts of Bugesera	350-450	20 February-02 March	10-20 May
	Most parts of Bugesera	250-350	20 February-02 March	10-20 May
	Rwamagana	250-350	20 February-02 March	10-20 May
	Most parts of Kayonza	250-350	02-12 March	10-20 May
	Eastern Kayonza	350-450	02-12 March	10-20 May
	Most parts of Ngoma	350-450	20 February-02 March	10-20 May
	Northern and Western part of Ngoma	250-350	20 February-02 March	10-20 May
	Most parts of Kirehe	350-450	20 February-02 March	10-20 May
	Northern parts of Kirehe	350-450	02 February-12 March	10-20 May
	Gatsibo	250-350	02-12 March	10-20 May
	Nyagatare	250-350	02-12 March	10-20 May
<b>Western Province</b>	Most parts of Nyabihu	350-450	20 February-02 March	10-20 May
	Western parts of Nyabihu	450-550	20 February-02 March	10-20 May
	Rubavu	450-550	20 February-02 March	10-20 May
	Most parts of Rutsiro	450-550	20 February-02 March	10-20 May
	Eastern parts of Rutsiro	350-450	20 February-02 March	10-20 May
	Most parts of Karongi	450-550	10-20 February	10-20 May
	Eastern parts of Karongi	350-450	20 February-02 March	10-20 May



	Ngororero	350-450	20 February-02 March	10-20 May
	Nyamasheke	450-550	10-20 February	20-30 May
	Rusizi	450-550	10-20 February	20-30 May

#### ADVISORIES ON EXPECTED SEASONAL RAINFALL FOR MARCH-MAY 2025

METEO RWANDA under the Ministry of Environment in collaboration with Ministry in Charge of Emergency Management (MINEMA), Ministry of Health (MoH), Ministry of Agriculture and Animal Resources (MINAGRI) and Rwanda Agriculture and Animal Resources Development Board (RAB), advises the public institutions, NGOs, Private Sector and the general public to make use of the seasonal forecast in their planning and decision making to increase productivity and mitigate risks associated with prevailing weather conditions in this upcoming March to May 2025 seasonal rainfall.

For more information, contact Rwanda Meteorology Agency (METEO RWANDA) on social media and toll-free number **6080**.

This outlook is supplemented by weather updates at different timescales (24-hours, 3- days, 5-days and 7- days), 10-days forecasts, monthly forecast and advisories issued by Rwanda Meteorology Agency.

Done at Kigali, on 22<sup>nd</sup> January, 2025

**Aimable GAHIGI**  
**Director General**