



Highlights:

- **The cumulative rainfall** for March_2019 was generally below the Long Term Mean (LTM) except Gitega, and Nyagatare stations which recorded rainfall that was within the range of the LTM. The rest the stations recorded rainfall which was slightly and far below the Long Term Mean.
- The rainfall distribution was widespread with wetter conditions over most parts of the country which improved the moisture content across the country during the last dekad of March 2019.
- The month of April_2019 is expected to experience enhanced rains with a widespread spatial distribution across the whole country.

I. Introduction

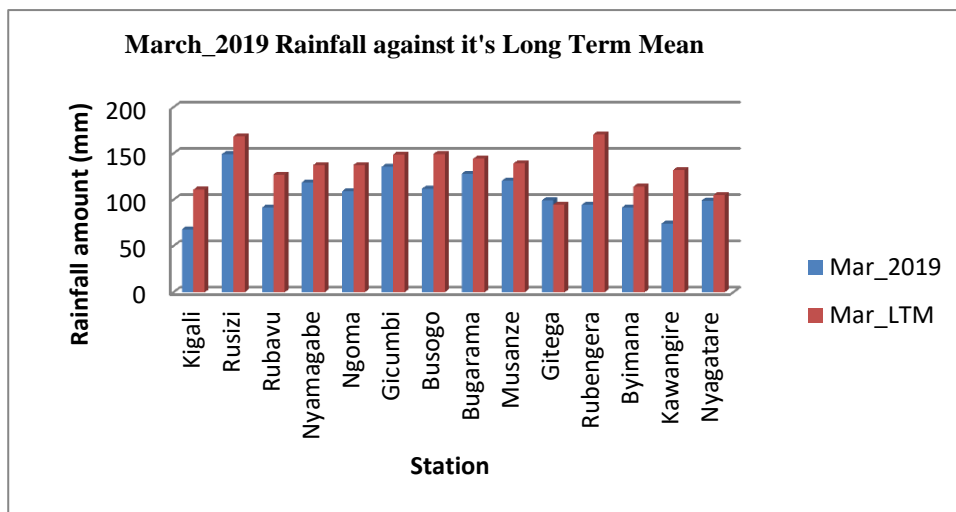
The rainfall during the month of March_2019 was generally below the Long Term Mean (LTM) except Gitega and Nyagatare stations which recorded rainfall that was within the range of the LTM.

a) The table and histogram below indicates the rainfall recorded during March_2019 and Long Term Mean (LTM) for the same period:

Cumulative rainfall (in mm) recorded at different stations

Station	Mar_2019	Mar_LTM
Kigali	68.1	111.0
Rusizi	149.4	168.4
Rubavu	91.5	127.3
Nyamagabe	118.9	137.7
Ngoma	109.1	137.5
Gicumbi	135.8	149.1
Busogo	111.9	149.4
Bugarama	128.3	144.4
Musanze	120.5	139.1
Gitega	99.4	94.7
Rubengera	94.6	170.6
Byimana	91.6	114.1
Kawangire	74.4	132.2
Nyagatare	99.3	104.9

Table1

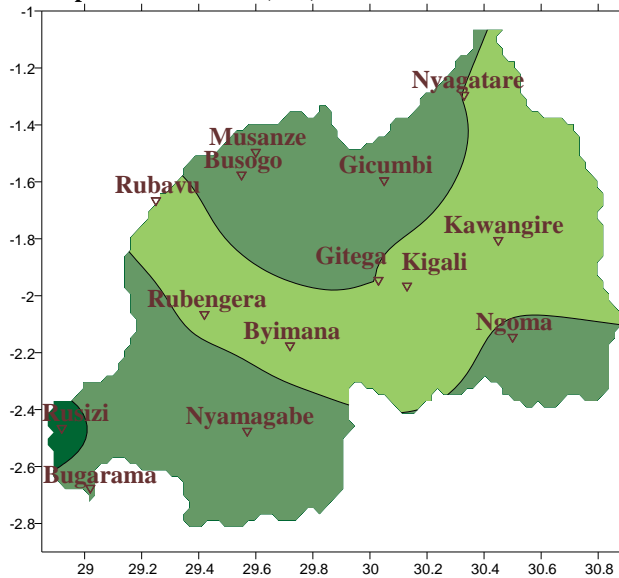


Plot1

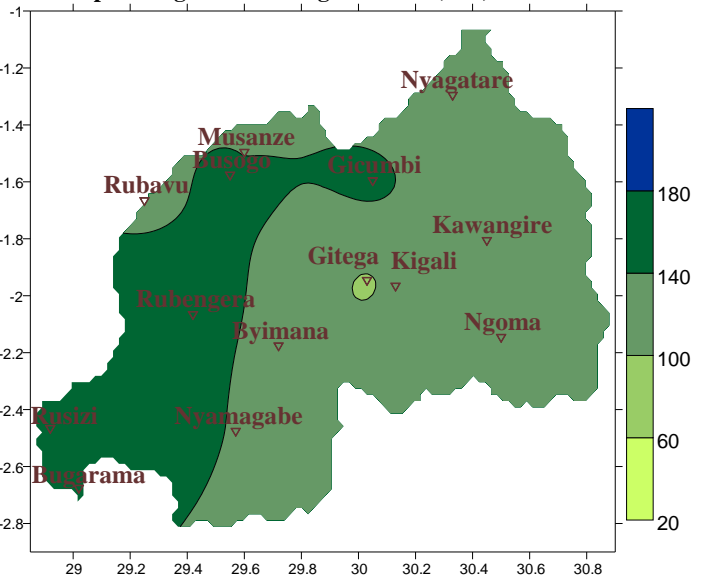
b) **Rainfall analysis:** The maps “**Map 1 and 2**” below shows the cumulative rainfall recorded during March_2019 and the Long Term Mean (LTM) cumulative rainfall for the same period.

The maps “**map 3 and 4**” indicates the cumulative rainfall recorded during February_2019 and the Long Term Mean (LTM) cumulative rainfall for the same period.

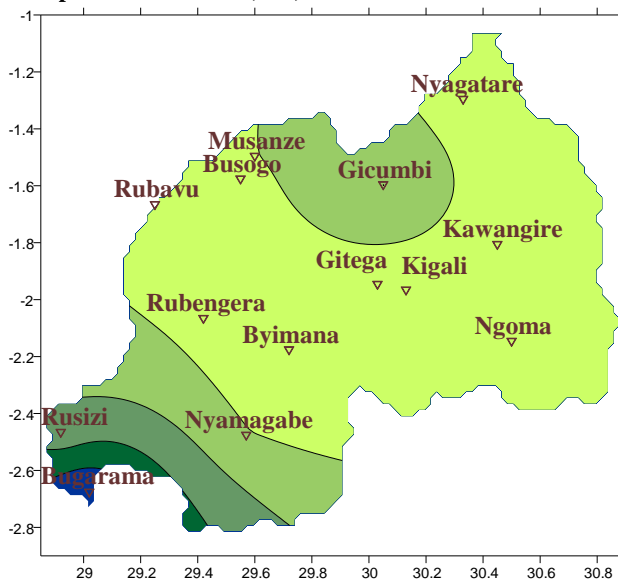
Map1: Total Rainfall (mm): Mar_2019



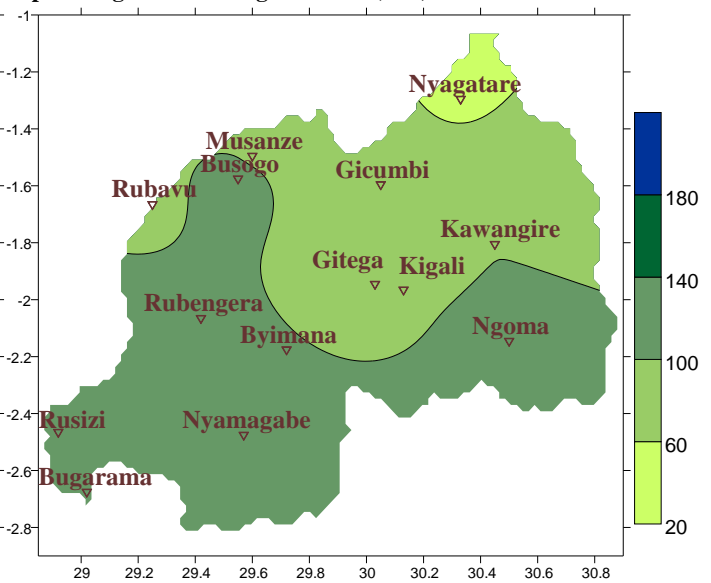
Map2: Long Term Average Rainfall (mm): Mar_LTM



Map3: Total Rainfall (mm): Feb_2019



Map4: Long Term Average Rainfall (mm): Feb_LTM

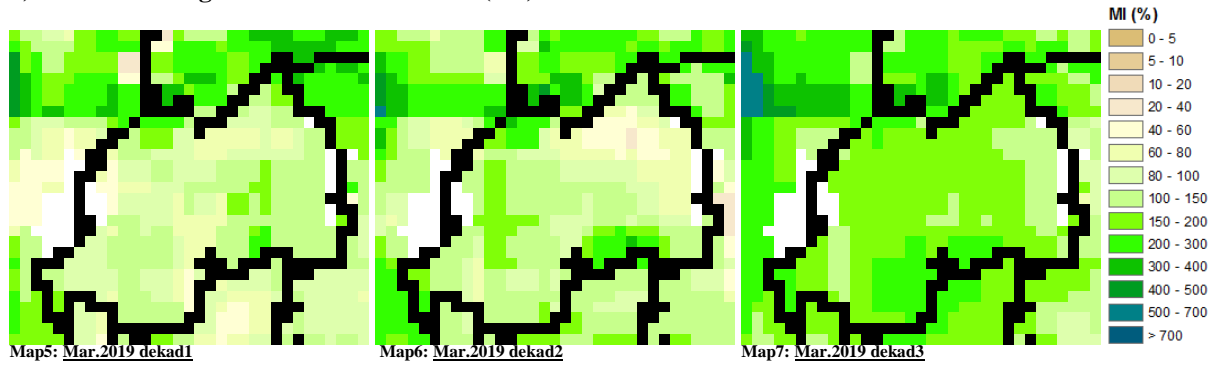


II. Detailed observed rainfall during March_2019

The rainfall during the month of March_2019 was generally below the Long Term Mean (LTM) except Gitega and Rusizi stations which recorded rainfall that was within the range of the LTM (Refer to above **Map1&2** and **Table1**). The observed cumulative rainfall for February_2019 was far below the Long Term Mean, except the south-western tip of the country (Bugarama station) where rainfall was considerably high (Refer to **Map3&4**).

III. Agricultural impact.

a) Satellite images: Soil Moisture Index (MI)



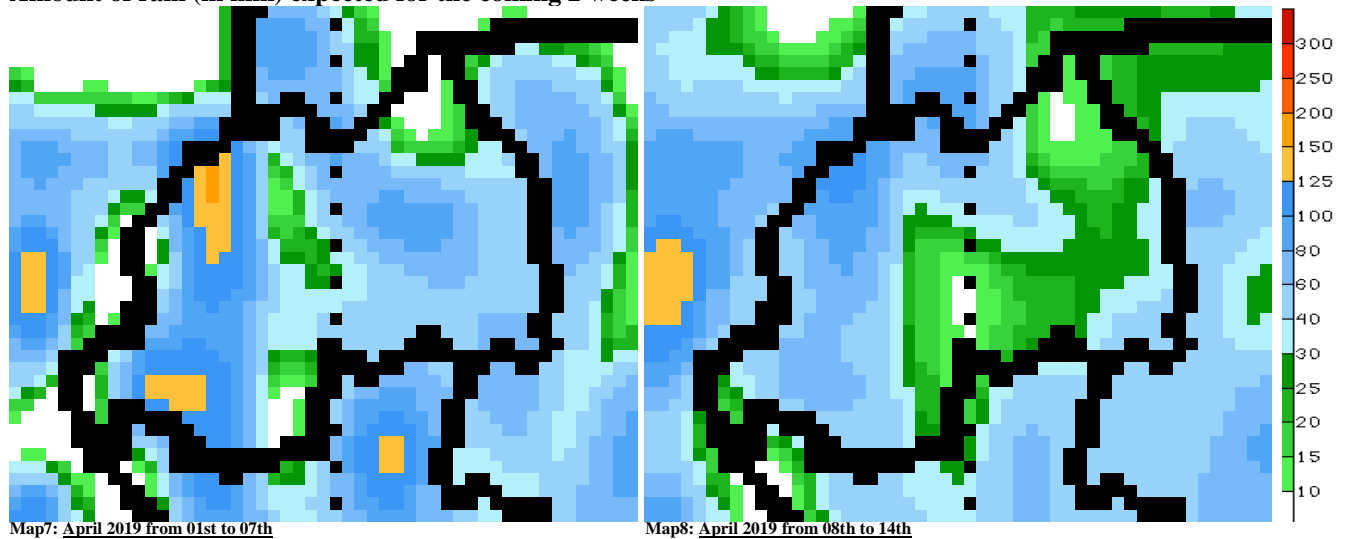
During the month of March_2019 the satellite derived moisture index showed a considerably increase from dekad2 to dekad3 as results of rainfall which was widely spread during the last dekad of March (**Map 5, 6&7**).

b) Rainfall forecast for April_2019

Wet conditions are expected to prevail over most parts of country; where the first dekad is expected to have slightly enhanced rains across most parts of the country especially the western.

- The **whole country** is expected to receive rains above 50mm within two weeks to come.

Amount of rain (in mm) expected for the coming 2 weeks



N.B: This forecast should be used in conjunction with the daily (24-hour), Three (3), Five (5) and Seven (7) days forecasts issued by the Rwanda Meteorology Agency (Meteo Rwanda)