



**Highlights:**

- **The cumulative rainfall** for dekad1\_May\_2018 we observe high rainfall amount over the central and generally a normal to above range over the country in comparison with the Long Term Mean (LTM);
- The soil moisture index is decreasing as accumulative rainfall decreases over most of the country; but still favourable;
- The rainfall during dekad2\_May\_2018 will remain with the same pattern as what we observed during dekad3 of April\_2018

**I. Introduction**

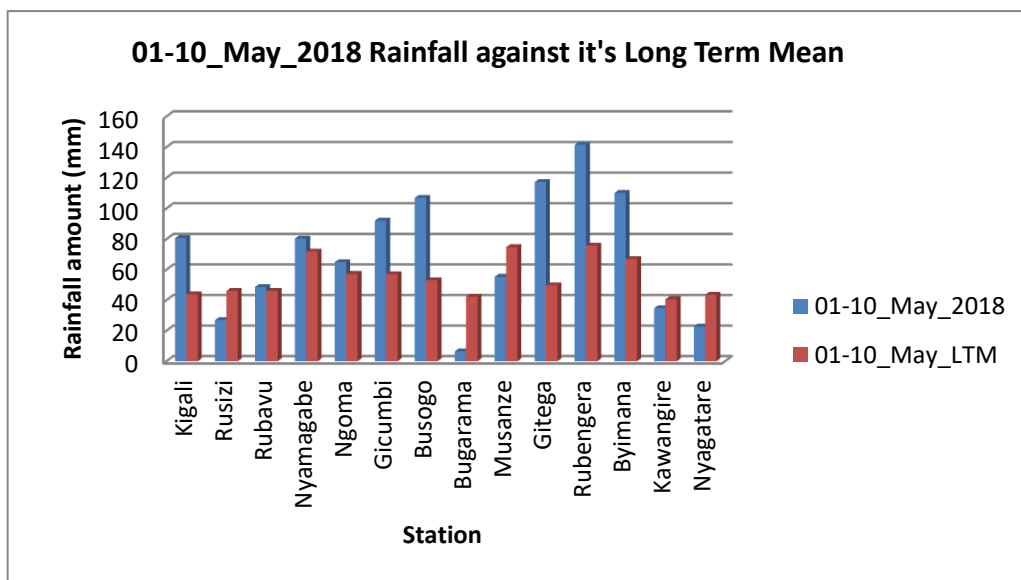
The rainfall during dekad1\_May\_2018 was over the central (especially central west) and generally a normal to above range over the country

a) The table and histogram below indicates the rainfall recorded during dekad1\_May\_2018 and the LTM (Long Term Mean) for the same period:

**Cumulative rainfall (in mm) recorded at different stations**

Station	01-10_May_2018	01-10_May_LTM
Kigali	80.6	43.8
Rusizi (Kamembe)	26.9	46.0
Rubavu (Gisenyi)	48.6	46.0
Nyamagabe (Gikongoro)	80.3	71.8
Ngoma (Kibungo)	64.9	57.2
Gicumbi (Byumba)	92.0	57.0
Busogo	106.9	53.0
Bugarama	6.4	42.3
Musanze (Ruhengeri)	55.3	74.7
Gitega	117.2	49.7
Rubengera	141.4	75.7
Byimana	110.1	66.9
Kawangire	34.7	40.6
Nyagatare	22.7	43.5

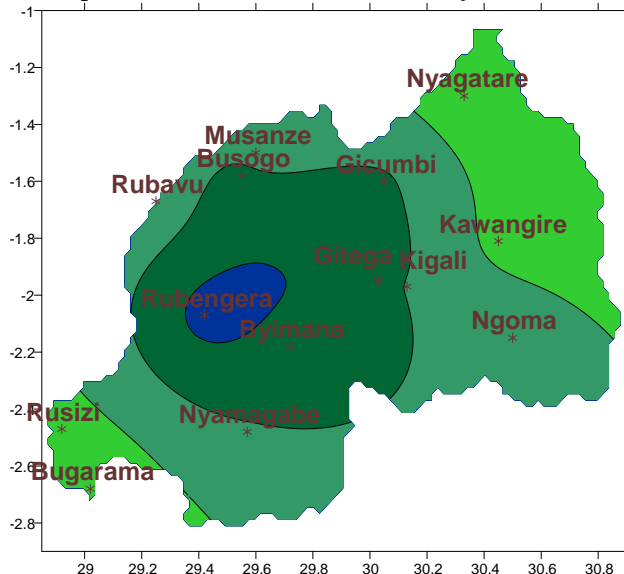
*Table1*



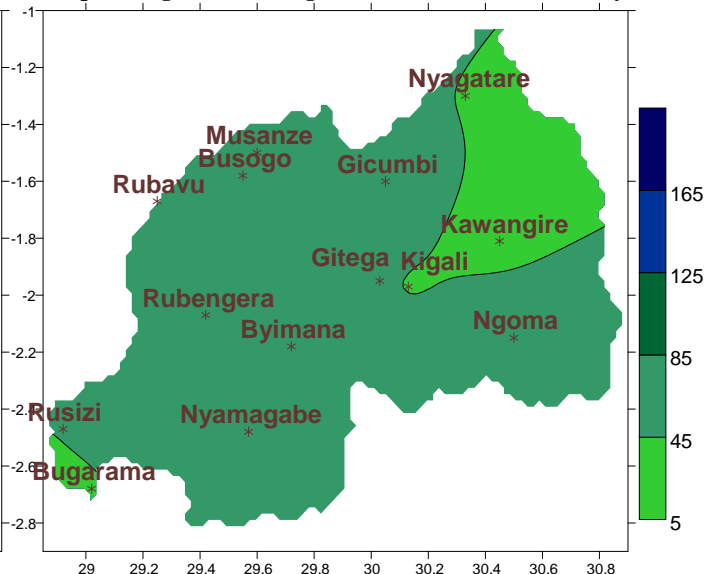
*Plot1*

b) **Rainfall analysis:** The maps “**Map 1 and 2**” below show the cumulative rainfall recorded during dekad1\_May\_2018 and the cumulative rainfall for the same period  
 The maps “**Map 3 and 4**” show the cumulative rainfall recorded during dekad3\_April\_2018 the cumulative rainfall for the same period

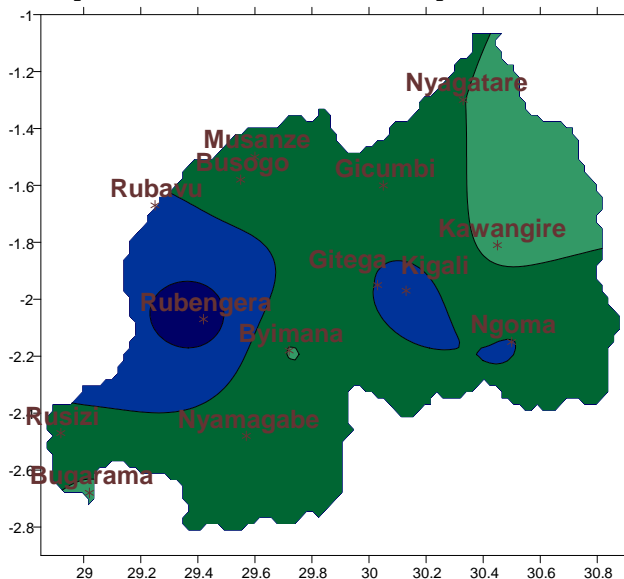
**Map1: Total Rainfall (mm): dekad1\_May\_2018**



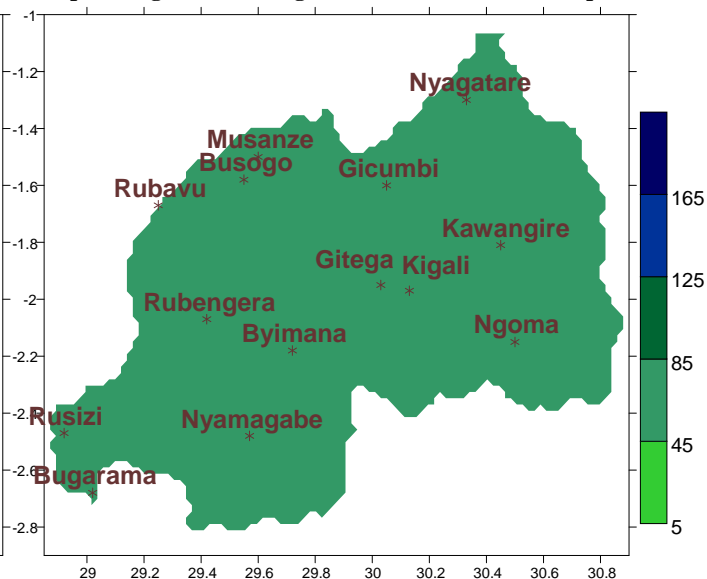
**Map2: Long Term Average Rainfall (mm): dekad1\_May\_LTM**



**Map1: Total Rainfall (mm): dekad3\_Apr\_2018**



**Map2: Long Term Average Rainfall (mm): dekad3\_Apr\_LTM**

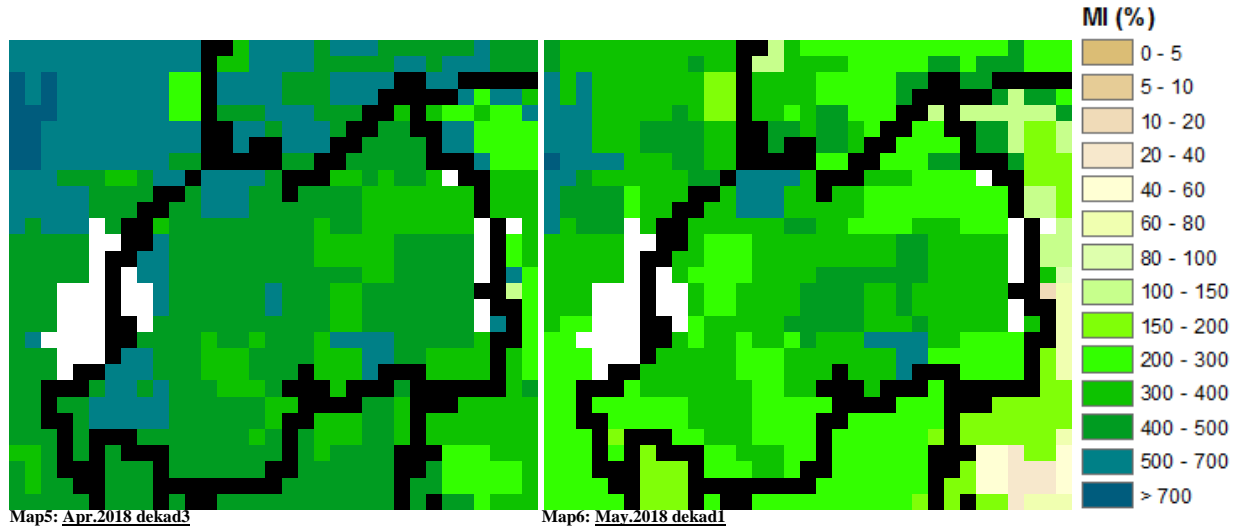


## II. Detailed observed rainfall during the dekad1\_May\_2018

The rainfall during dekad1\_May\_2018 was over the central (especially central west; at Rubengera station where the observations were the highest with 141.4mm of rainfall) and generally a normal to above range over the country (see **Map1&2** and **Table1**); similarly for deka3\_April\_2018 as compared with dekad3\_April LTM (see **Map3&4**)

### III. Agricultural impact.

#### a) Satellite images: Soil Moisture Index (MI)

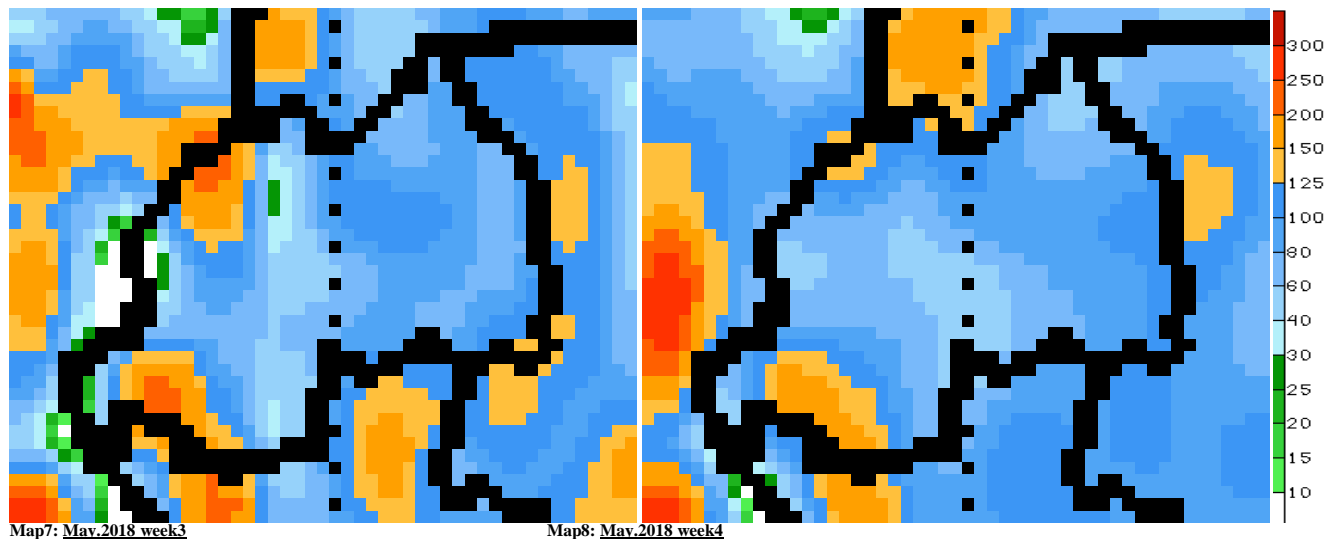


From the start of dekad3\_April to end of dekad1\_May\_2018; the satellite imagery shows a considerably high soil moisture index country wide due to the west weather conditions we are experiencing during this wet-season (also called Season-B; see **Map 5&6**)

#### b) Rainfall forecast for dekad2 May\_2018

The distribution of rains during dekad2\_May\_2018 is expected to remain the same as what we observed during dekad3 of April\_2018 with being even more wet towards its end

**Amount of rain (in mm) expected for the coming two weeks:**



**N.B:** This forecast should be used in conjunction with the daily (24-hour), Three (3), Five (5) and Seven (7) days forecasts issued by the Rwanda Meteorology Agency (Meteo Rwanda)