



Highlights:

- **The cumulative rainfall** for May 2018 was in above normal especially over central and south; elsewhere; the records show a normal situation
- **Satellite derived soil moisture index shows a general decrease** at some places where the rains were not very high and kept moisty over the south because of too much rainfall events happened recently over there
- **The conditions during June 2018** are expected to be dry except the north and west which are expected to have little rains

I. Introduction

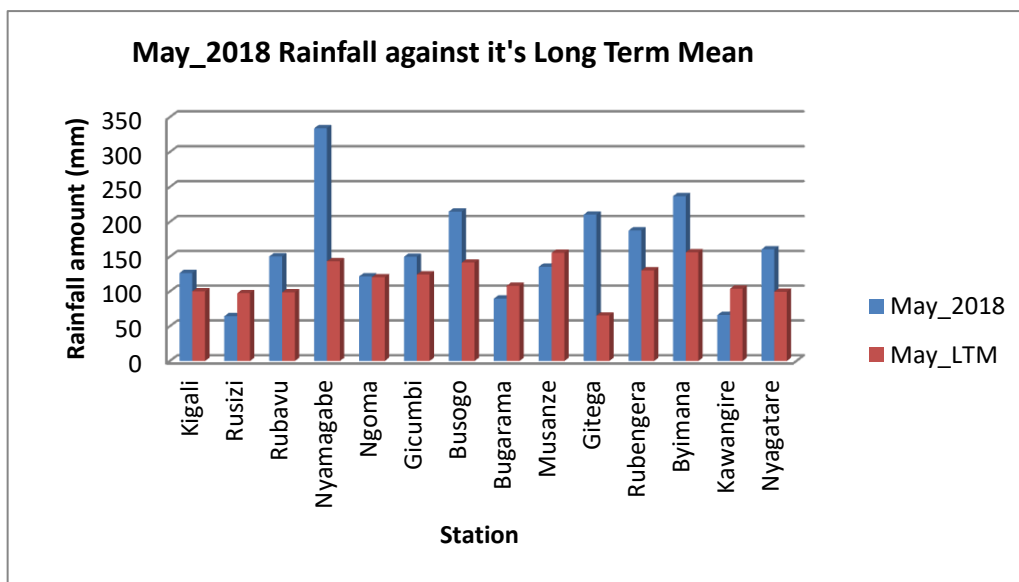
During May_2018; the rains became high at some localized stations of the central and south (Gitega, Byimana and Nyamagabe stations) and was less over some parts of west (at Rusizi and Bugarama stations) and east (at Kawangire station); while elsewhere within the country; the rains were ranging in the normal situation comparing with the LTM (Long Term Mean)

a) The table and histogram below indicates the rainfall recorded during May 2018 against its LTM:

Cumulative rainfall (in mm) recorded at different stations

Station	May_2018	May_LTM
Kigali	126.6	100.1
Rusizi (Kamembe)	64.4	97.5
Rubavu (Gisenyi)	150.4	98.7
Nyamagabe (Gikongoro)	334.0	143.4
Ngoma (Kibungo)	121.6	120.4
Gicumbi (Byumba)	149.9	124.4
Busogo	214.8	141.6
Bugarama	89.7	108.2
Musanze (Ruhengeri)	135.6	155.6
Gitega	210.4	65.3
Rubengera	187.7	130.2
Byimana	236.9	156.3
Kawangire	66.1	103.9
Nyagatare	160.6	99.5

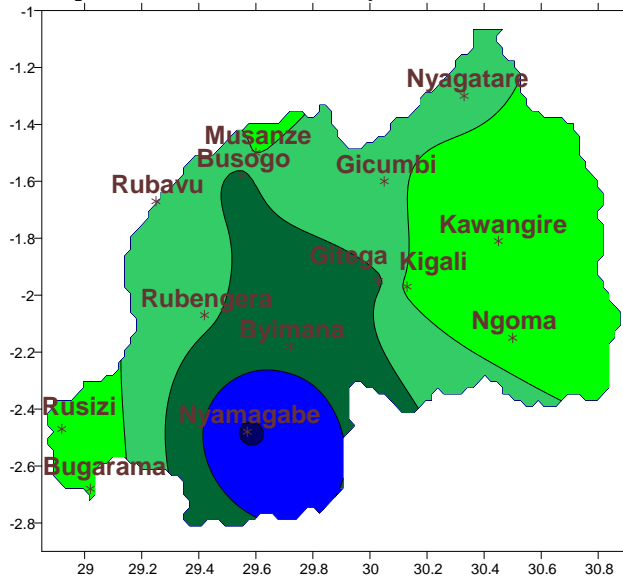
Table1



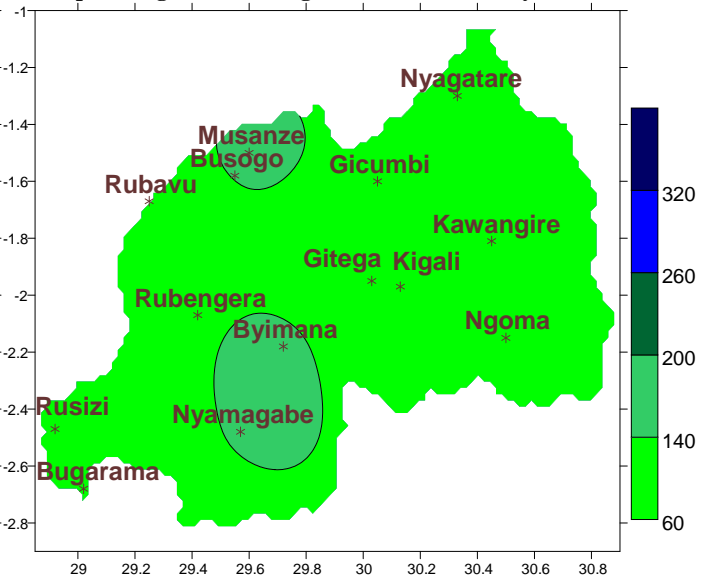
Plot1

- b) **Rainfall analysis:** The maps “**Map 1 and 2**” below show the cumulative rainfall recorded during May 2018 and the cumulative rainfall for the same period
 The maps “**map 3 and 4**” show the cumulative rainfall recorded during April 2018 and the cumulative rainfall for the same period

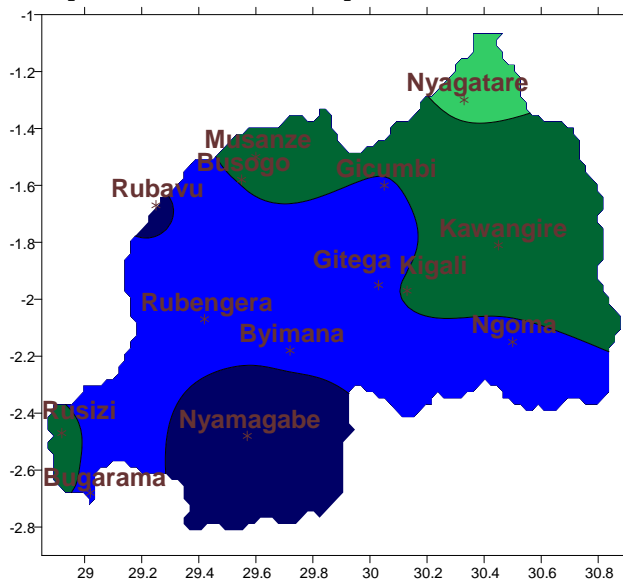
Map1: Total Rainfall (mm): May_2018



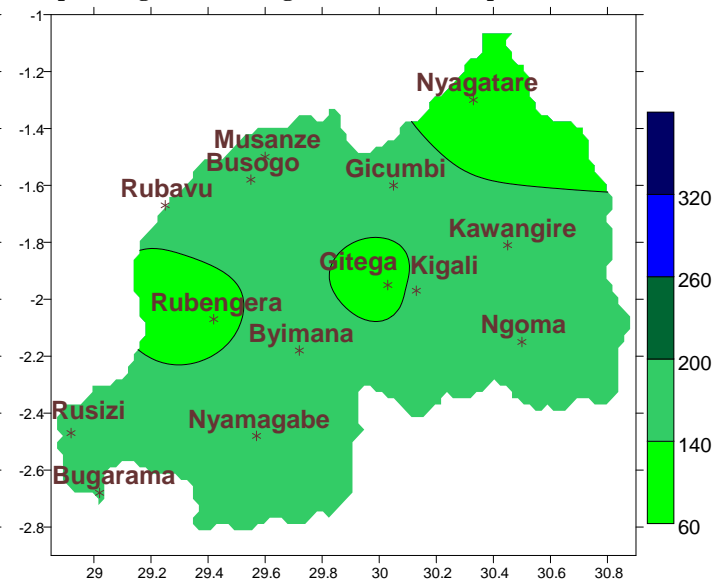
Map2: Long Term Average Rainfall (mm): May_LTM



Map3: Total Rainfall (mm): Apr_2018



Map4: Long Term Average Rainfall (mm): Apr_LTM

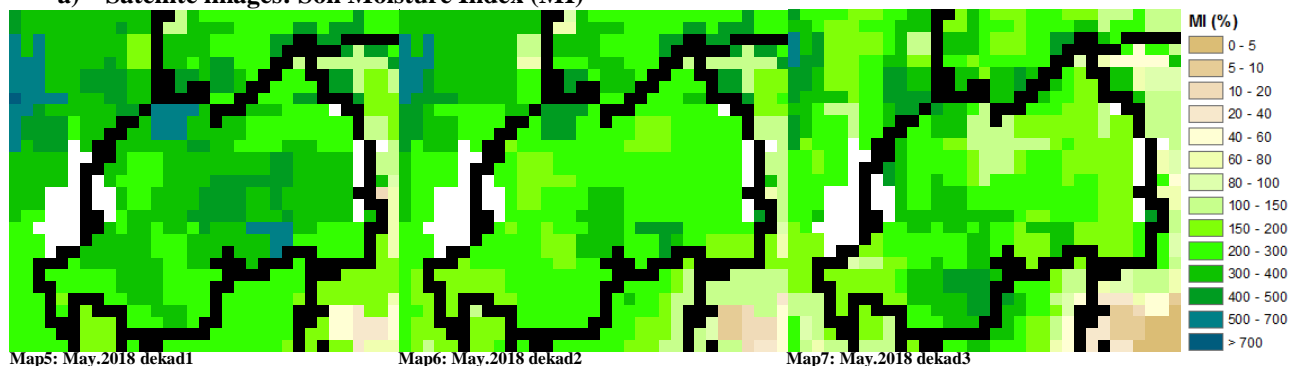


II. Detailed observed rainfall during the May 2018

Cumulative rainfall for May_2018; the rains became high at some localized stations of the central and south (Gitega, Byimana and Nyamagabe stations) and was less over some parts of west (at Rusizi and Bugarama stations) and east (at Kawangire station); while elsewhere within the country; the rains were ranging in the normal situation comparing with the LTM (see **Map1&2** and **Table1**); for the month of April_2018 was way above the Long Term Mean (LTM) for all stations across the country (see **Map3&4**)

III. Agricultural impact.

a) Satellite images: Soil Moisture Index (MI)



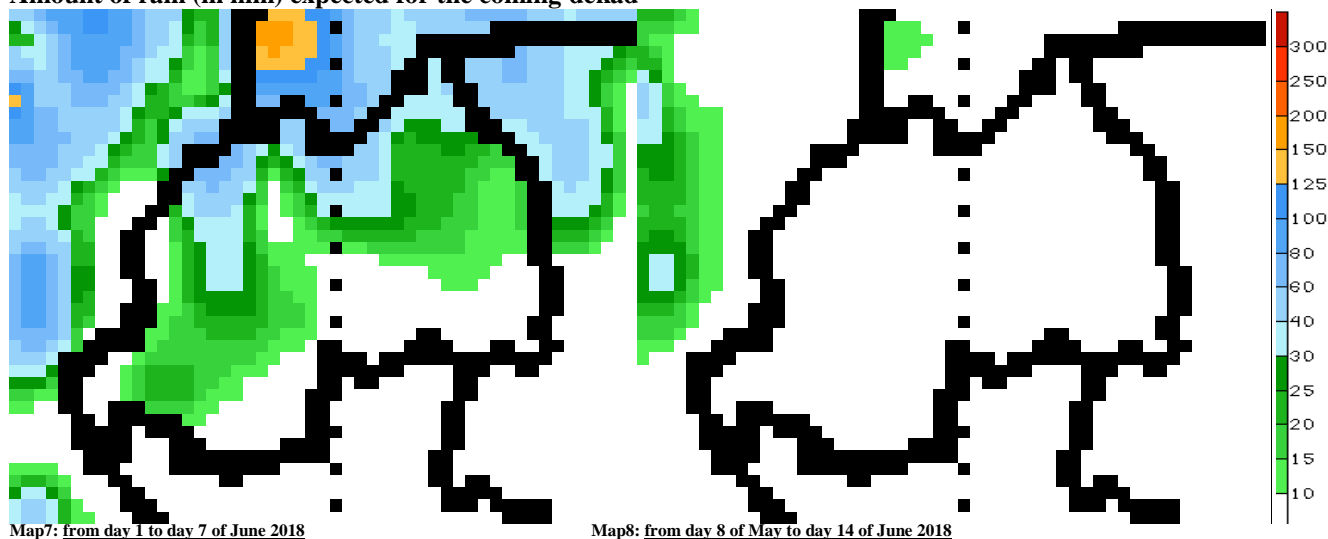
During May 2018 the satellite derived moisture index shows a reduction at some places where the rains were not very high and kept moisty over the south because of too much rainfall events happened recently over there (see **Map 5, 6&7**)

b) Rainfall forecast for June_2018

The rainfall during the month of June_2018:

- Kigali City: we expect little rains (10-15mm) in the first week of June then switching to a completely dry weather condition during the second week
- Eastern Province: we expect little rains (10-15mm) in the first week of June over the south and higher up a bit over the north (20-40mm) then the entire region switching to a completely dry weather condition during the second week
- Southern Province: we expect little rains (10-15mm) in the first week of June then switching to a completely dry weather condition during the second week
- Western Province: we expect little rains (10-15mm) in the first week of June over the south and higher up a bit over the north (20-40mm) then the entire region switching to a completely dry weather condition during the second week
- Northern Province: we expect little rains moderate rains (20-40mm) then switching to a completely dry weather condition during the second week

Amount of rain (in mm) expected for the coming dekad



N.B: This forecast should be used in conjunction with the daily (24-hour), Three (3), Five (5) and Seven (7) days forecasts issued by the Rwanda Meteorology Agency (Meteo Rwanda)