



Highlights:

- **The overall cumulative rainfall** for dekad2_May_2019; was observed to be in the normal to above category over the east; central, north and north-west; while the rest of the country ranges in the below normal category as compared with the LTM (Long-Term Mean);
- The soil moisture content kept on increasing especially over the east, central and north resulting from higher rainfall amount received during this last dekad over those mentioned regions
- The rainfall during third and last dekad of May_2019: we expect the system to be stronger within the first week and to weaken as we're heading to the end of the month.

I. Introduction

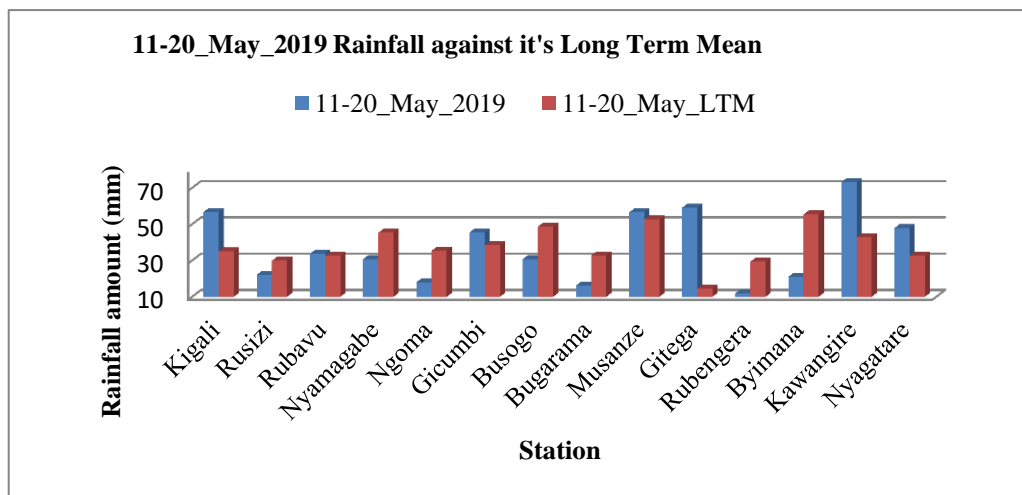
The 2nd dekad of May_2019 shows that the cumulative rainfall over the east, central, north and north-west are in the normal to above range while the rest of the country is in the below normal category as compared with the LTM (Long-Term Mean)

a) The table and histogram below indicates the rainfall recorded during dekad2 May_2019:

Cumulative rainfall (in mm) recorded at different stations

Station	11-20_May_2019	11-20_May_LTM
Kigali	56.7	35.1
Rusizi	22.1	29.9
Rubavu	33.7	32.6
Nyamagabe	30.8	45.3
Ngoma	18.0	35.4
Gicumbi	45.5	38.4
Busogo	30.8	48.7
Bugarama	16.2	32.8
Musanze	56.5	52.7
Gitega	59.1	14.5
Rubengera	11.9	29.4
Byimana	21.0	55.4
Kawangire	73.2	42.8
Nyagatare	47.9	32.6

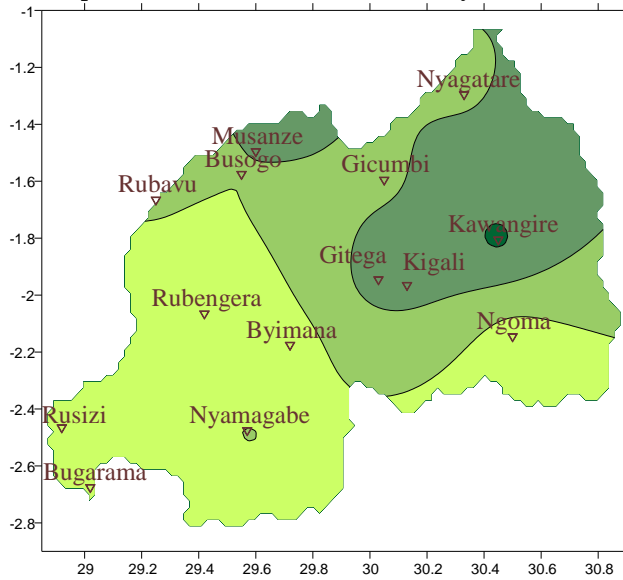
Table1



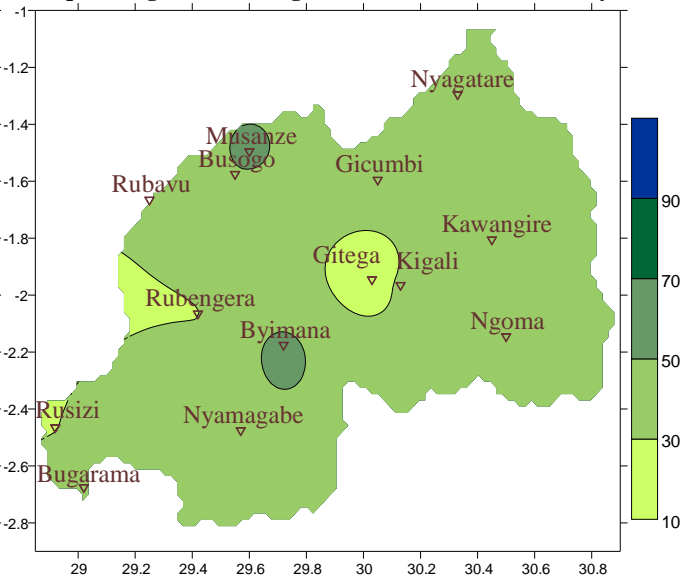
Plot1

b) **Rainfall analysis:** The maps “**Map 1 and 2**” below show the cumulative rainfall recorded during dekad2 May_2019 and the cumulative rainfall for the same period
 The maps “**map 3 and 4**” show the cumulative rainfall recorded during dekad1 May_2019 and the cumulative rainfall for the same period

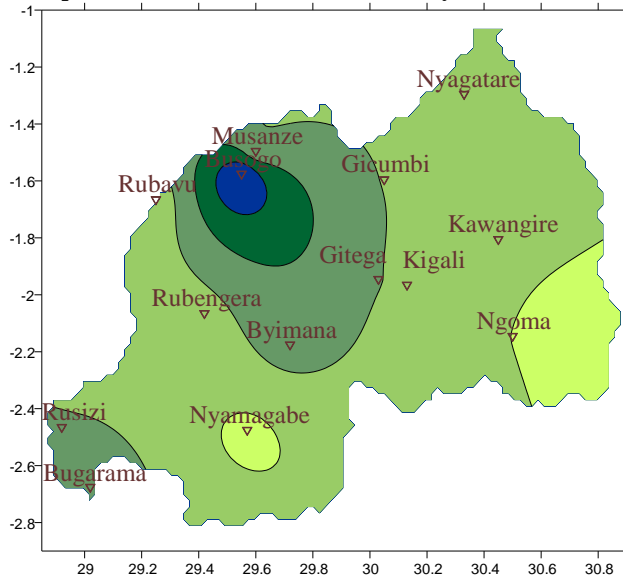
Map1: Total Rainfall (mm): dekad2_May_2019



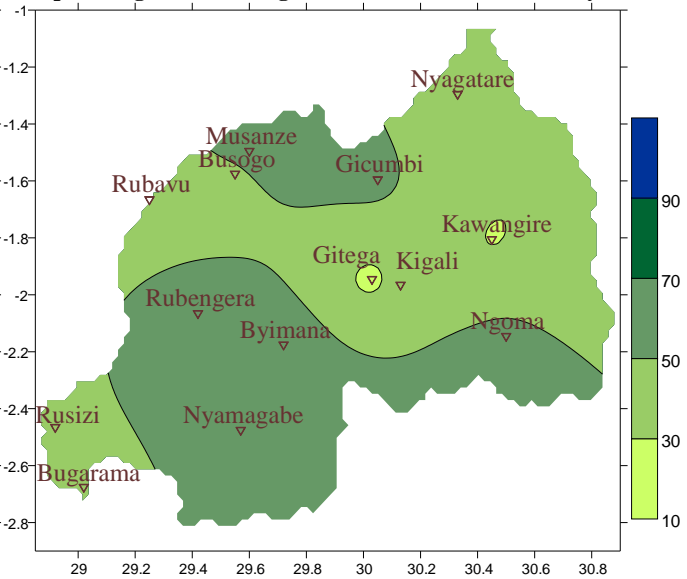
Map2: Long Term Average Rainfall (mm): dekad2_May_LTM



Map1: Total Rainfall (mm): dekad1_May_2019



Map2: Long Term Average Rainfall (mm): dekad1_May_LTM

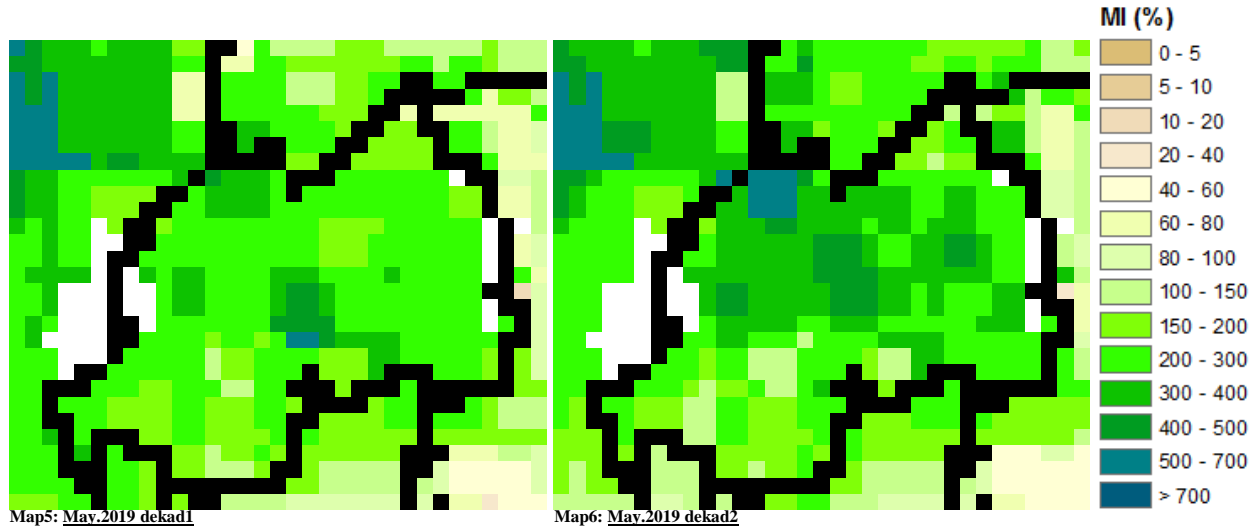


II. Detailed observed rainfall during the dekad2 May_2019

During the dekad2 May_2019; we observe that the cumulative rainfall amounts over the east; central, north and north-west are in the normal to above range while the rest of the country ranges in the below normal category as compared with the LTM (Long-Term Mean; where the highest value was observed at Kawangire station with 73.2mmm of rainfall; see **Map1&2** and **Table1**); while the rainfall during dekad1_May_2019 we observe high rainfall amount over stations of the north; and less was observed over the south and southeast as compared to what have been observed countrywide and also with the LTM (see **Map3&4**)

III. Agricultural impact

a) Satellite images : Soil Moisture Index (MI)



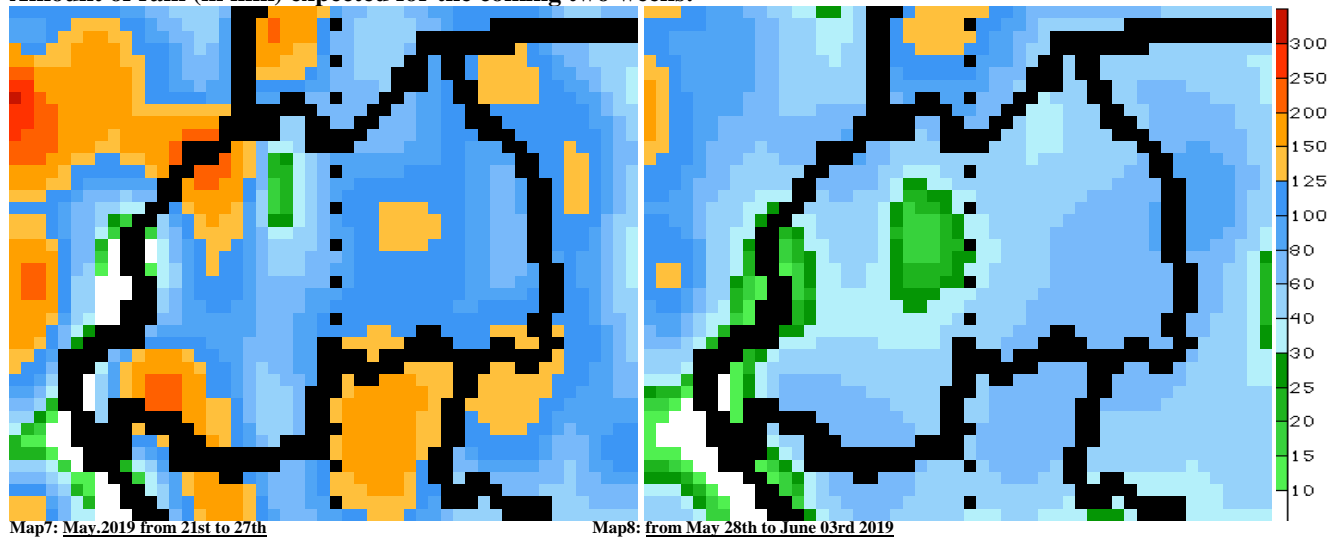
Observing the dekad1 to dekad2_May_2019 satellite derived moisture index; kept on showing wet soil increasingly as a result of the wet weather condition observed especially over the east, central and north parts of the country (see **Map 5&6**)

b) Rainfall forecast for dekad3 May_2019

The rainfall during third and last dekad of May_2019: we expect the system to be wetter within the first week and to weaken as we're heading to the end of the month:

- **Kigali City:** is expected to receive rainfall amount ranging from 40mm to 100mm within these coming two weeks
- **Eastern Province:** is expected to receive rainfall amount ranging from 60mm to 80mm within these coming two weeks
- **Southern Province:** is expected to receive rainfall amount ranging from 60mm to 125mm within these coming two weeks
- **Western Province:** is expected to receive rainfall amount ranging from 40mm to 125mm within these coming two weeks
- **Northern Province:** is expected to receive rainfall amount ranging from 30mm to 125mm within these coming two weeks

Amount of rain (in mm) expected for the coming two weeks:



N.B: This forecast should be used in conjunction with the daily (24-hour), Three (3), Five (5) and Seven (7) days forecasts issued by the Rwanda Meteorology Agency (Meteo Rwanda)