



Highlights:

- o **The cumulative rainfall** for dekad2_October_2018 was in the above range at almost all representative stations with respect to the Long term mean (LTM)
- o The soil moisture index is showing an increase due to recent much rains we received during the last dekad (dekad2 October_2018)
- o The forecast for dekad3_October_2018, rains are expected to be generally normal and equally distributed

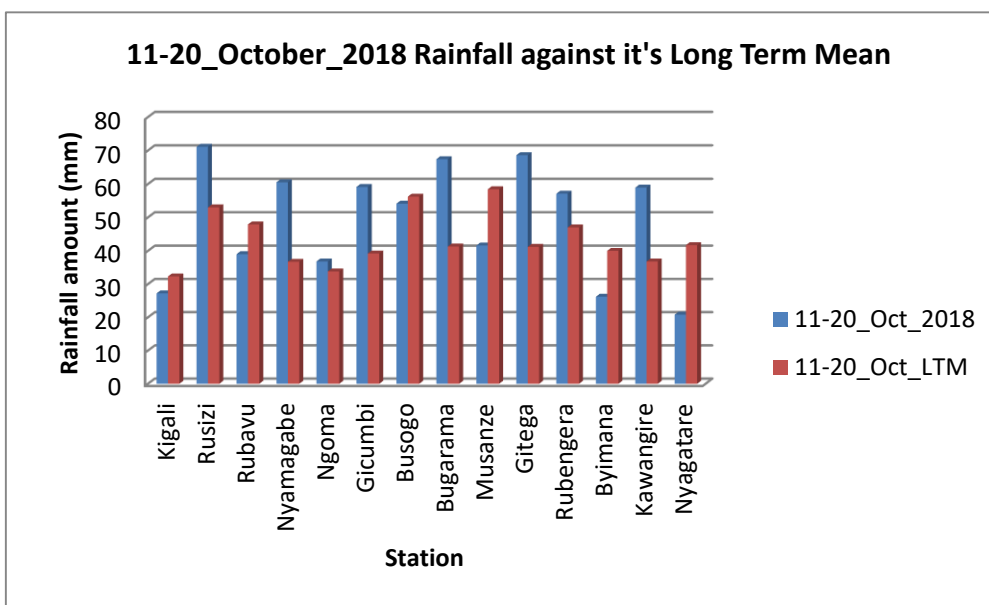
I. Introduction

The dekad2_October_2018 shows an above normal range at almost all representative stations with respect to the Long term mean (LTM)

a) The table and histogram below indicates the rainfall recorded during dekad2 October_2018:

Cumulative rainfall (in mm) recorded at different stations

Station	11-20_Oct_2018	11-20_Oct_LTM
Kigali	27.2	32.3
Rusizi (Kamembe)	71.1	53.0
Rubavu (Gisenyi)	39.0	47.9
Nyamagabe (Gikongoro)	60.5	36.7
Ngoma (Kibungo)	36.8	33.8
Gicumbi (Byumba)	59.1	39.2
Busogo	54.1	56.2
Bugarama	67.4	41.3
Musanze (Ruhengeri)	41.6	58.4
Gitega	68.6	41.2
Rubengera	57.1	47.0
Byimana	26.2	40.0
Kawangire	58.9	36.8
Nyagatare	20.8	41.7

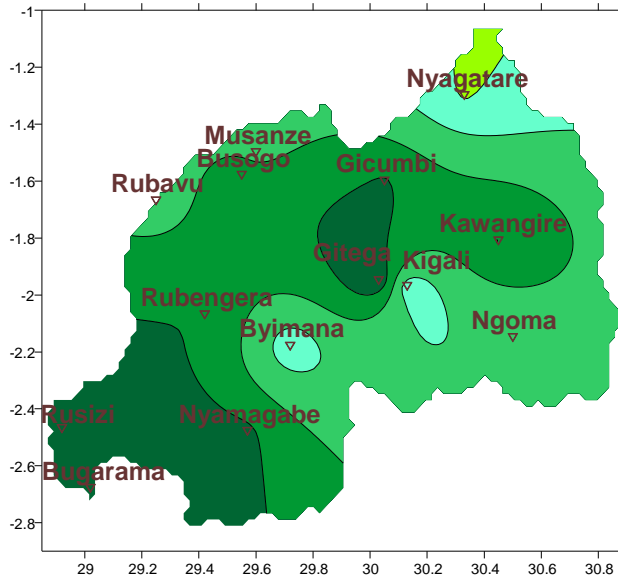


Plot1

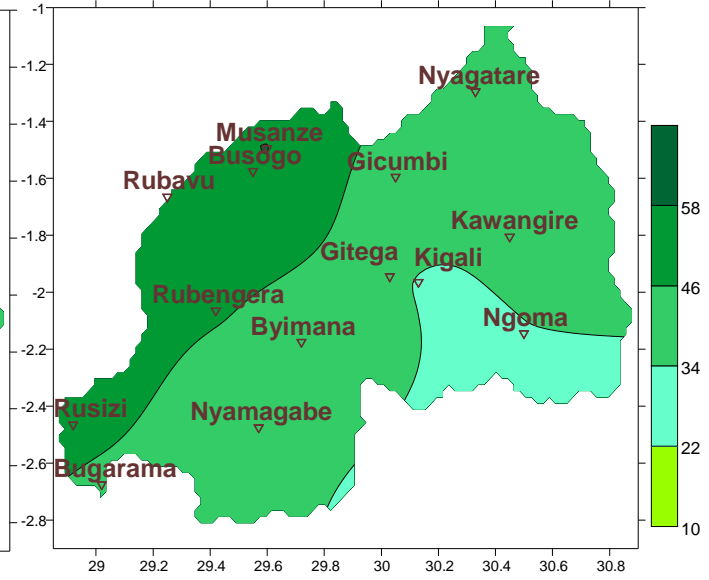
Table1

- b) **Rainfall analysis:** The maps “**Map 1 and 2**” below shows the cumulative rainfall recorded during dekad2_October_2018 and the LTM cumulative rainfall for the same period
The maps “**map 3 and 4**” shows the cumulative rainfall recorded during dekad1_October_2018 and the LTM cumulative rainfall for the same period

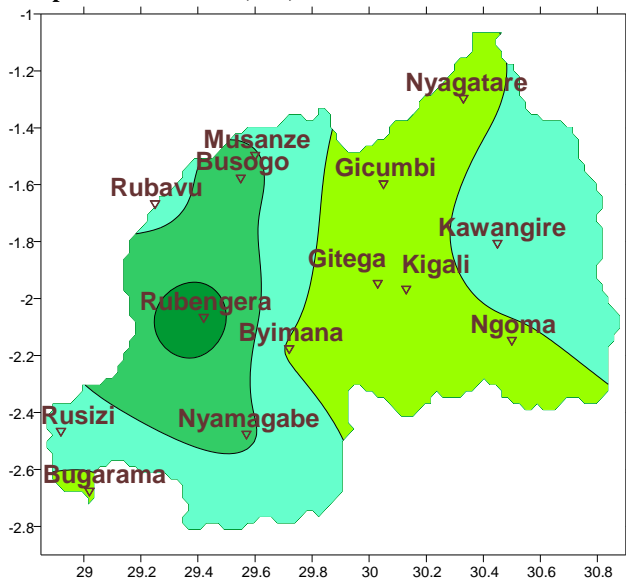
Map1: Total Rainfall (mm): dekad2_Oct_2018



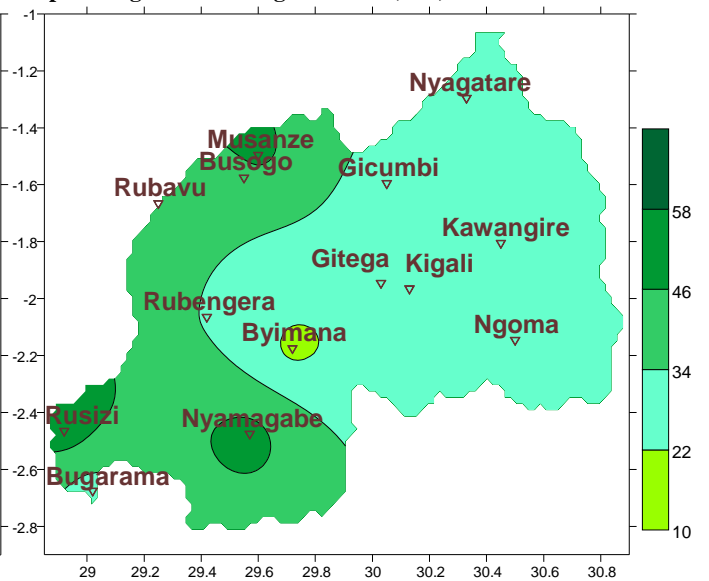
Map2: Long Term Average Rainfall (mm): dekad2_Oct_LTM



Map1: Total Rainfall (mm): dekad1_Oct_2018



Map2: Long Term Average Rainfall (mm): dekad1_Oct_LTM

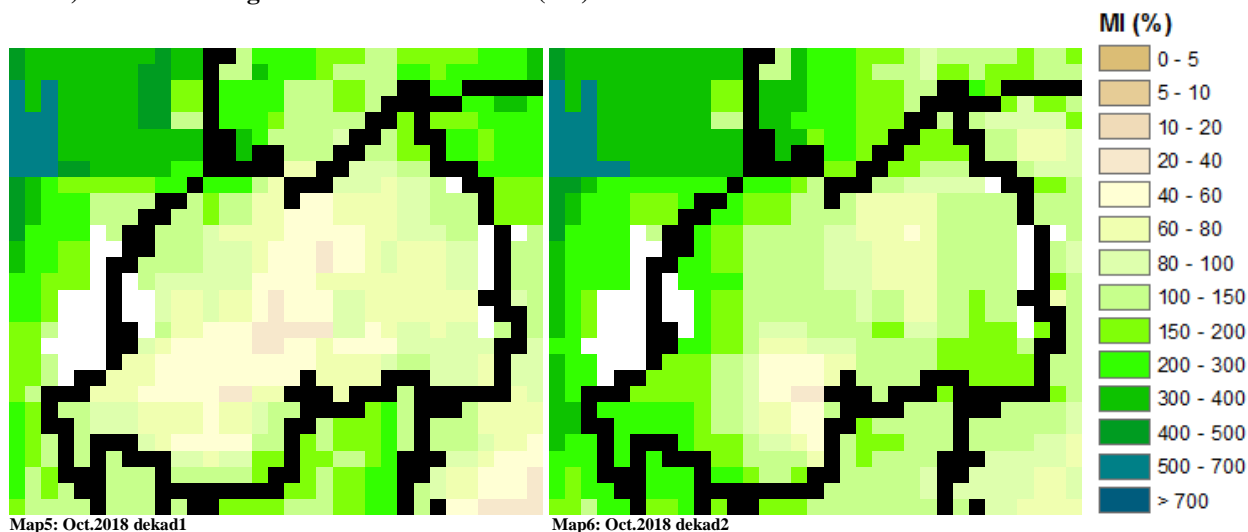


II. Detailed observed rainfall during the dekad2_October_2018

The dekad2_October_2018 shows an above normal range at almost all representative stations with respect to the Long term mean LTM (see **Map1&2** and **Table1**); for dekad1_October_2018; the rainfall amount was little at almost all stations except what was observed over the west in comparison with the Long Term Mean (LTM) of rainfall amount (see **Map3&4**)

III. Agricultural impact.

a) Satellite images : Soil Moisture Index (MI)



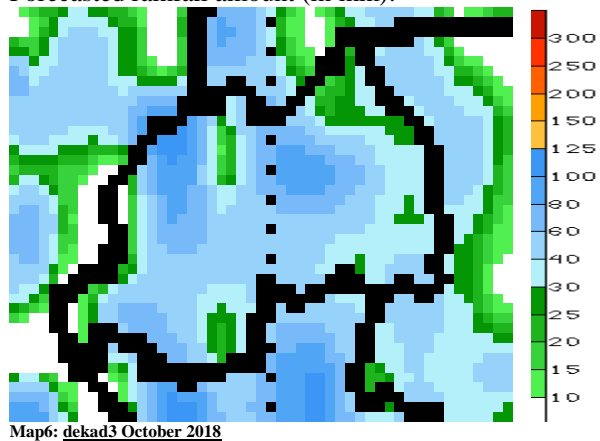
During dekad1 to dekad2_October_2018; the satellite derived moisture index indicates soil to be moisty due to recent much rain we received during the last two dekad (see **Map 5&6**)

b) Rainfall forecast for dekad3 October_2018

The forecast for dekad3_October_2018 rains are expected country:

- Kigali City; we expect rainfall amount ranging from 60-120mm (in the above normal range)
- Eastern Province; we expect rain between 30 and 100mm (below normal to normal range)
- Southern Province; we expect rain ranging between 40 and 100mm (within the normal range)
- Western Province; we expect rainfall amount ranging between 40 and 125mm (normal to above)
- Northern Province; we expect rainfall amount ranging between 30 and 125mm (below normal to normal range)

Forecasted rainfall amount (in mm):



N.B: This forecast should be used in conjunction with the daily (24-hour), Three (3), Five (5) and Seven (7) days forecasts issued by the Rwanda Meteorology Agency (Meteo Rwanda)