



RAINFALL OUTLOOK FOR JANUARY TO FEBRUARY 2023

The months of January and February 2023 (JF) constitute an important rainfall period for the country, the climate systems indicate that there are chances of normal rains over most parts of the country and slightly above normal over parts of south western part of the country.

The National climate outlook forecast for January to February 2023 rainfall indicates that, south western parts of the country are likely to experience enhanced rainfall compared to other parts of the country while the rest of the country will experience rainfall amounts near Long Term Mean rainfall, (The LTM rainfall ranges between 50 and 350 mm..

The expected rainfall is mostly associated with local features coupled with neutral conditions of Indian Ocean Dipole (IOD) and sea surface temperature in Pacific Ocean which will prevail throughout the month of January and February 2023.

The rainfall outlook for different locations is as follows:

- **Rainfall ranging between 270-340 mm** is expected in Nyamasheke, Nyaruguru and Rusizi Districts and most parts of Karongi, Nyamagabe and Huye and southwestern parts of Gisagara and Nyanza Districts.
- **Rainfall ranging between 200-270 mm** is expected in Rubavu, Rutsiro, western parts of Nyabihu, Ruhango and Ngororero Districts, eastern parts of Karongi, small portion of eastern Nyamagabe and Huye Districts, small parts of western Muhanga, most parts of Nyanza and Gisagara Districts.
- **Rainfall ranging between 130-200 mm** is expected in most parts of Musanze, Gakenke and Muhanga Districts, in western parts of Kamonyi, north western parts of Burera Districts, the same rainfall amount is projected in the eastern parts of Ruhango, Nyabihu, Ngororero, Nyanza and small part of Gisagara Districts.
- **Rainfall ranging between 60-130 mm** is expected in Eastern Province (Nyagatare, Gatsibo, Kayonza, Rwamagana, Bugesera, Ngoma and Kirehe Districts), Kigali City (Gasabo, Nyarugenge and Kicukiro Districts), Northern Province (Gicumbi, Rulindo, most parts of Burera and small part of eastern Gakenke Districts) and eastern parts of Kamonyi District.



Rainfall forecast for January to February 2023 and the Long Term mean (LTM) for the same period

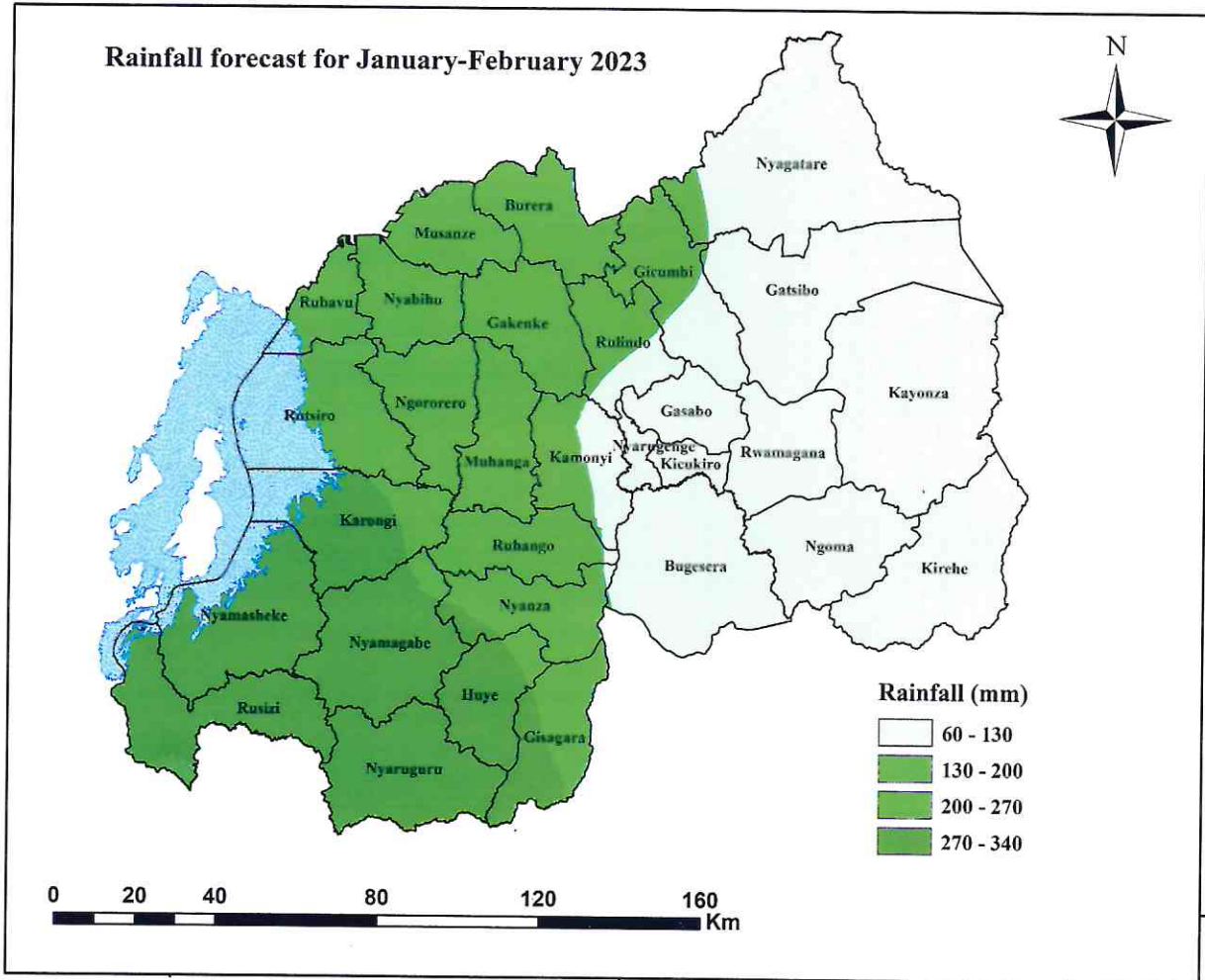


Figure 1: Rainfall forecast for January to February 2023



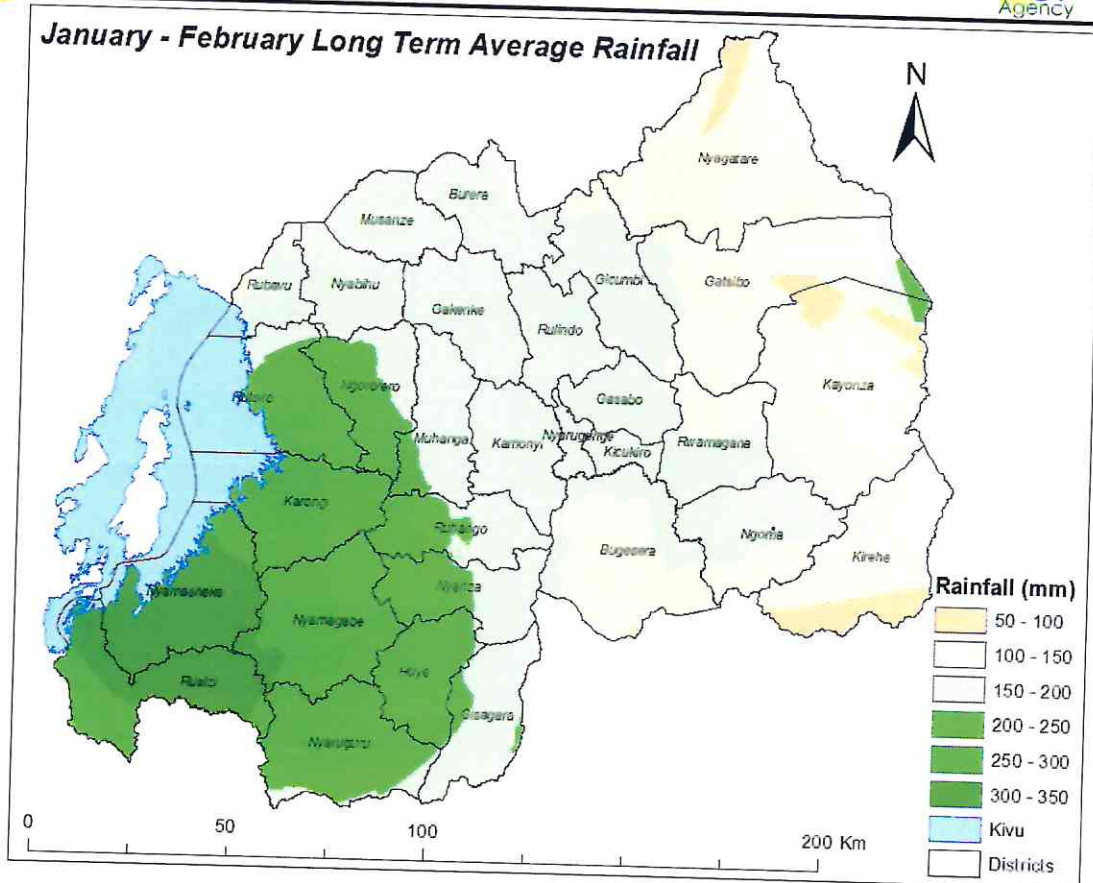


Figure 2: January to February Long-term average rainfall

The expected rainfall will be within the range of Long Term Mean (LTM) and slightly above over south western parts of the country during the month of January to February 2023.

The expected rainfall may affect specific sector activities such as post harvest handling activities in agriculture ; therefore relevant authorities are advised to put in place both preventive and mitigative strategies to cope with aforementioned effects.

For more information contact Rwanda Meteorology Agency (Meteo Rwanda) on its social media and toll free number 6080.

N.B This outlook is supplemented by daily updates of different timescales 24-hours, 5-days and 7-days forecasts, 10-days forecast, regular monthly forecast updates and advisories issued by Rwanda Meteorology Agency.

Done on 29th December, 2022.

Aimable GAHIGI

Aimable GAHIGI
Director General

