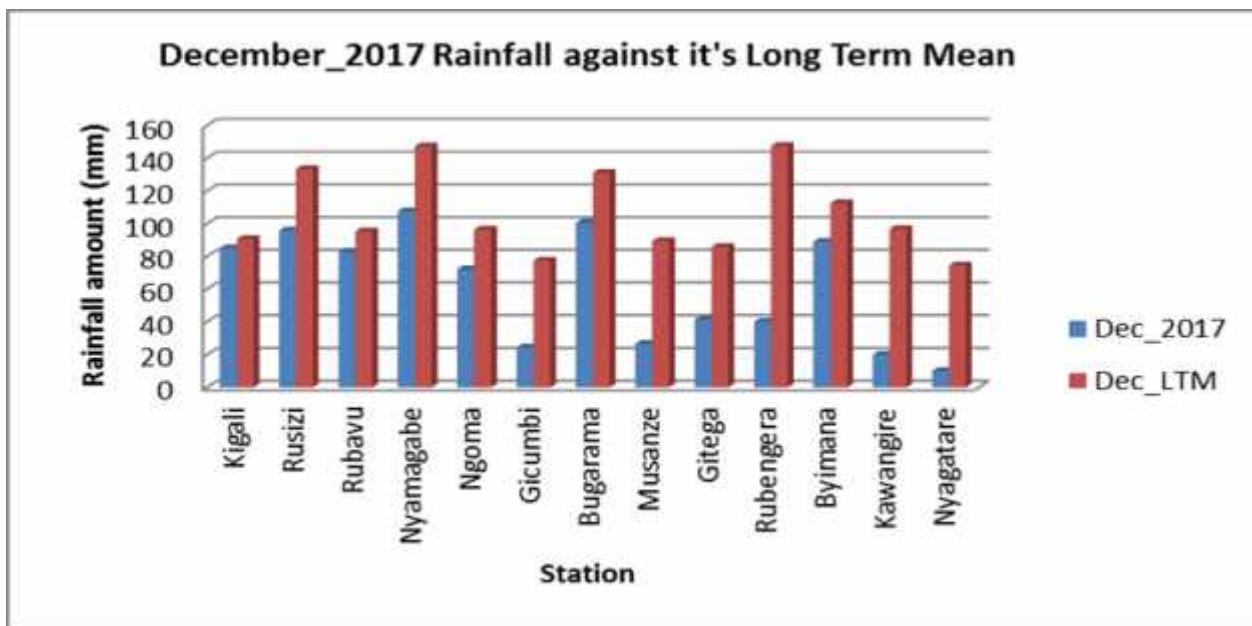




Comparison of Rainfall performance during December 2017 and Long term mean of the country

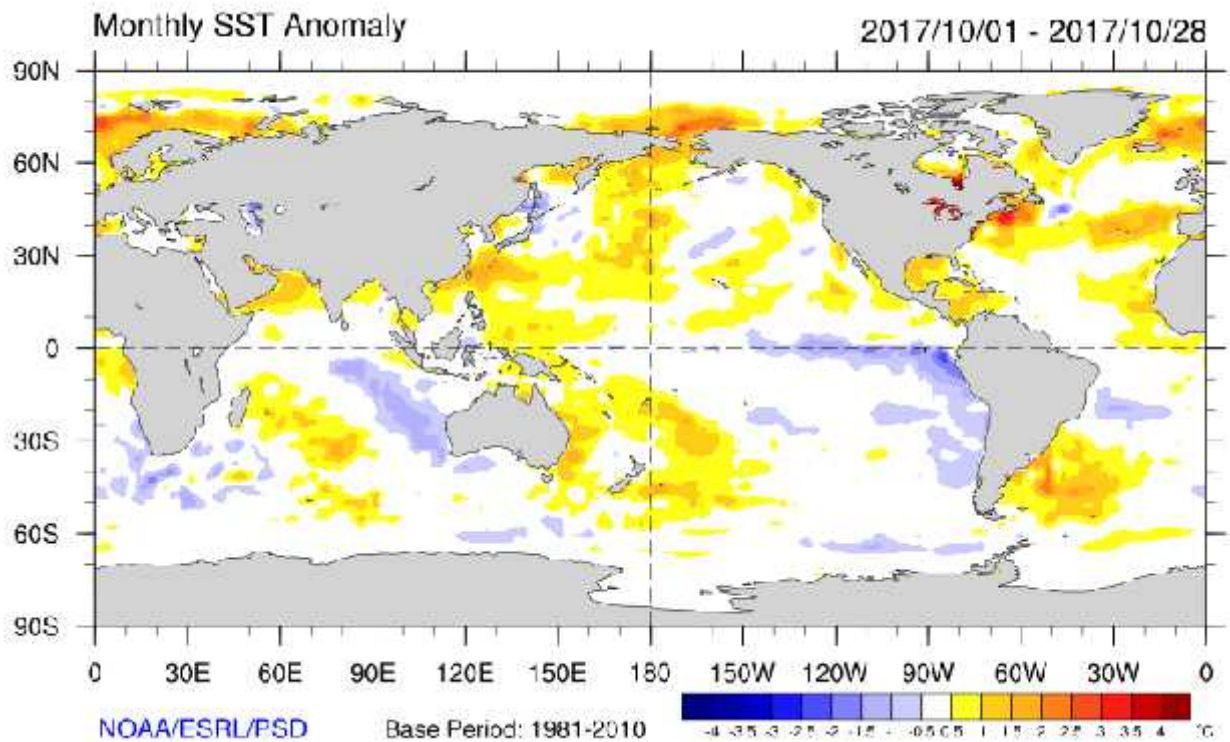


- **REVIEW OF THE WEATHER DURING DECEMBER 2017**

- Stations across the country during December 2017 recorded rainfall which was below the Long Term Mean (LTM). The observations indicate some localized stations in Northern, Central and Eastern parts of the country that recorded rainfall which is far below the Long Term mean (LTM).

- **PREVAILING SYNOPTIC CONDITIONS DURING OCTOBER 2017**

The Sea Surface Temperature (SST) anomaly during the period 01 October – October 28, 2017 showed that over central equatorial Pacific Ocean stretching towards the eastern equatorial Pacific region (Niño 4 to Niño 1&2 areas), cooler than average to near average SST anomaly was observed, with the area stretching from central towards western equatorial Pacific Ocean recording warmer than average SST. This situation presents a neutral El Niño Southern Oscillation (ENSO) phase with models forecasting an increased likelihood of Negative ENSO towards the end of the year 2017. Near average to cooler than average SST conditions dominated eastern side of equatorial Indian Ocean.



Sea surface temperatures for the period 01 October to 28 October 2017 (Source: NOAA/ESRL/PSD)

- **WEATHER OUTLOOK FOR JANUARY 2018**

The forecast indicates that most parts of the country are likely to experience near-average to below rains during the Month of January 2018.

The month of January 2018, is expected to be within the range of LTM, with some localized places recording less than that especially in North eastern, parts of the country.

The cessation of the seasonal rainfall is expected towards the end of the first week of January 2018 country wide.

N.B This outlook is supplemented by updates at different timescales (24-hours, 5-days and 10-days forecasts) and advisories issued by Rwanda Meteorology Agency.

Done on 5th January, 2018