



**Highlights:**

- **The cumulative rainfall** for dekad2\_September\_2017 was within the Long Term Mean (LTM) for most parts of the country except the central eastern where the observations show above LTM situation.
- The soil moisture index shows an increase in moisture content over the parts of eastern province (due to increase in rainfall amount during dekad2 of September\_2017) and a decrease over the northern parts (due to relative decrease of rainfall compared to dekad1 of September\_2017)
- The rainfall during dekad3 September \_2017 is expected to **remain normal** for the whole country however it is expected to be enhanced compared to dekad2 of September\_2017 (Especially north and west)

**I. Introduction**

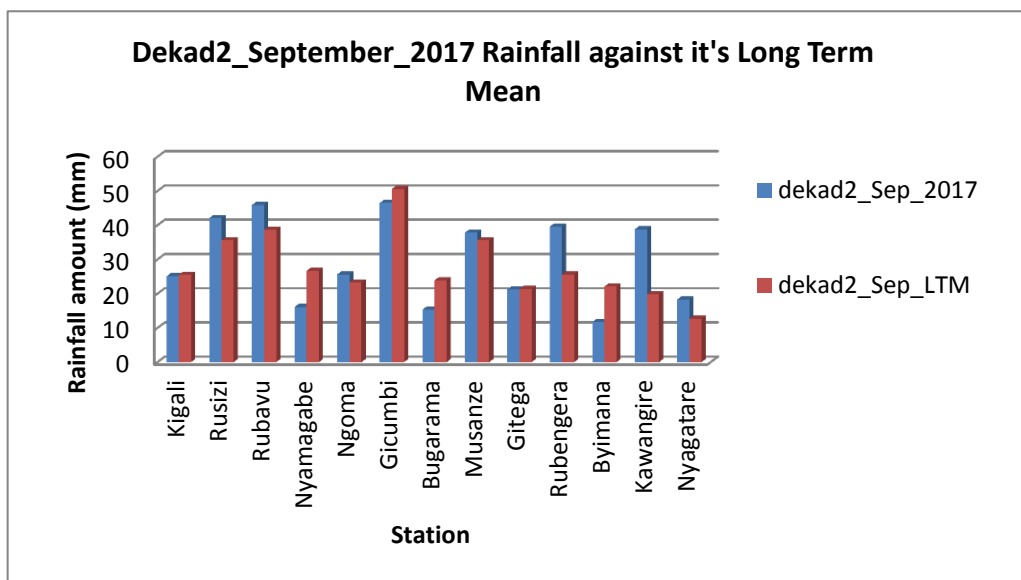
The second dekad of September\_2017 shows a wide spread distribution of rainfall which is comparable the Long Term Mean (LTM) in most parts of the country; except the central eastern (at Kawangire station) where the observation shows rainfall which was above the LTM.

a) The table and histogram below indicates the rainfall recorded during dekad2 September\_2017:

**Cumulative rainfall (in mm) recorded at different stations**

Station	dekad 2_Sep_2017	dekad2_Sep_L TM
Kigali	25.1	25.5
Rusizi (Kamembe)	42.1	35.6
Rubavu (Gisenyi)	45.9	38.6
Nyamagabe (Gikongoro)	16.1	26.7
Ngoma (Kibungo)	25.6	23.3
Gicumbi (Byumba)	46.5	50.6
Bugarama	15.3	23.9
Musanze (Ruhengeri)	37.8	35.6
Gitega	21.2	21.4
Rubengera	39.6	25.6
Byimana	11.7	22.1
Kawangire	38.8	19.8
Nyagatare	18.3	12.7

*Table1*

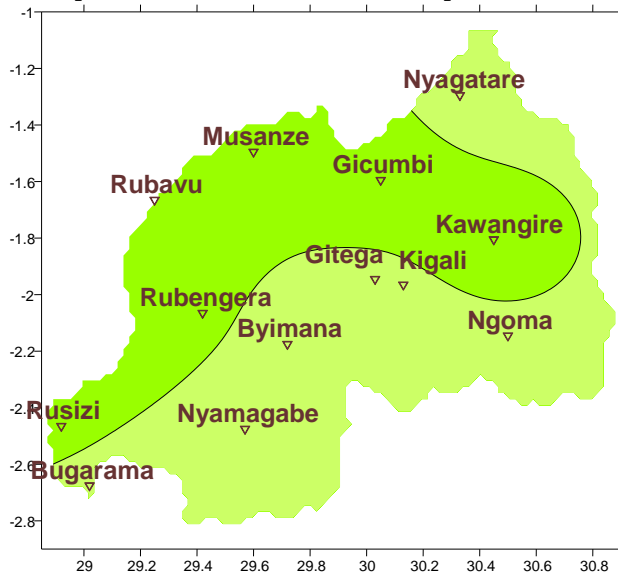


*Plot1*

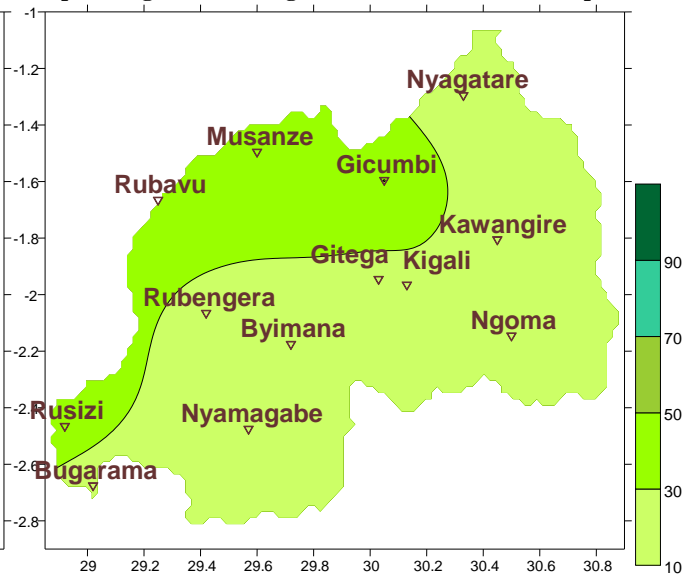
b) **Rainfall analysis:** The maps “**Map 1 and 2**” below show the cumulative rainfall recorded during dekad2 September\_2017 and the cumulative rainfall for the same period.

The maps “**map 3 and 4**” show the cumulative rainfall recorded during dekad3\_September\_2017 and the cumulative rainfall for the same period.

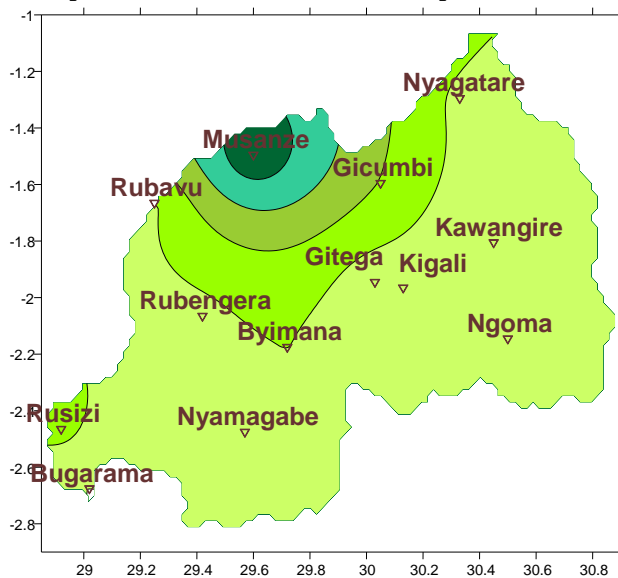
**Map1: Total Rainfall (mm): dekad2\_Sep\_2017**



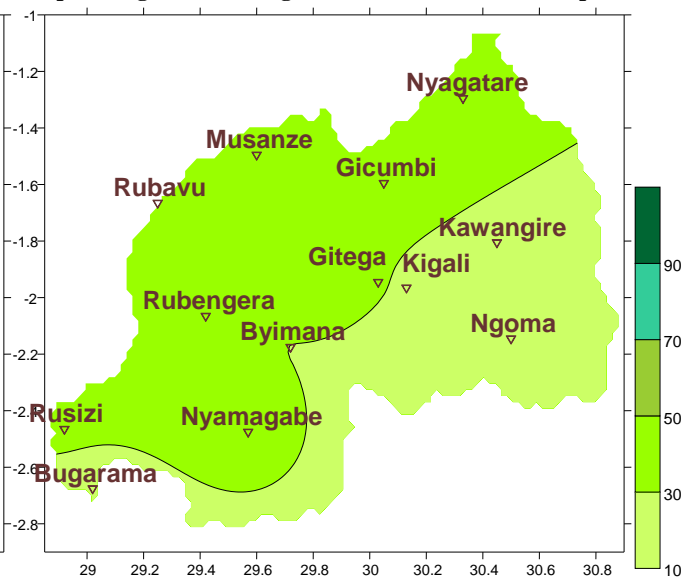
**Map2: Long Term Average Rainfall (mm): dekad2\_Sep\_LTM**



**Map1: Total Rainfall (mm): dekad1\_Sep\_2017**



**Map2: Long Term Average Rainfall (mm): dekad1\_Sep\_LTM**

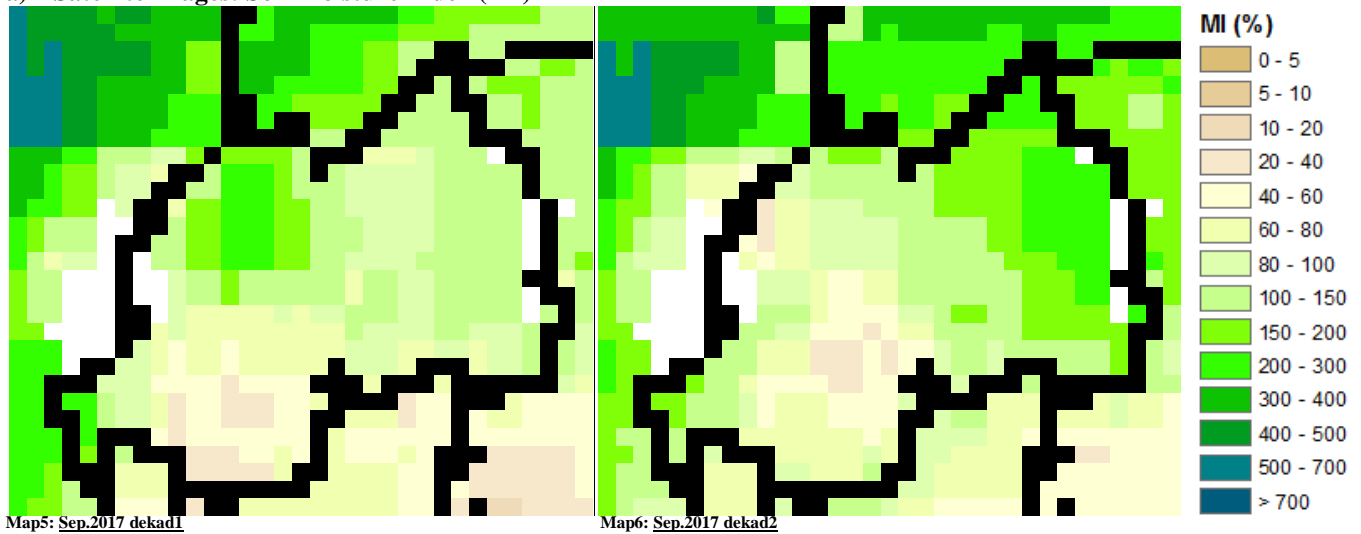


## II. Detailed observed rainfall during the dekad2\_September\_2017

The dekad2 of September\_2017 was nearly the LTM over most parts of the country except the central eastern where the observations show above the LTM pattern (see **Map1&2** and **Table1**). While the cumulative rainfall for dekad1\_September\_2017 show that the northern and western experienced high rainfall amount due to the shift of the ITCZ from the northern part of Africa (see **Map1&2** and **Table1**)

### III. Agricultural impact.

#### a) Satellite images: Soil Moisture Index (MI)



During dekad2 of September\_2017; the satellite derived soil moisture index shows an increase in soil moisture content over the eastern part (due to increase in rainfall amount during dekad2 of September\_2017) and a decrease over the northern part (due to relative decrease of rainfall compared to dekad1 of September\_2017; see **Map 5&6**)

The distribution of rains during dekad3 of September\_2017; is expected to be within the range of the LTM of the same period and slightly enhanced compared to what happened during dekad2 of Sptember\_2017 (especially in the north and west). Farmers are advised to take advantage of the widespread wet conditions across the country.

#### b) Rainfall forecast for dekad3 of September\_2017

During dekad3 of September\_2017 we expect increased rains distributed across the country.

**N.B: This forecast should be used in conjunction with the daily (24-hour), Three (3), Five (5) and Seven (7) days forecasts issued by the Rwanda Meteorology Agency (Meteo Rwanda)**