



Kigali, 10th November 2022

Weather Forecast valid from 11th to 20th November 2022

- 1. Rainfall forecast:** During the second (2nd) dekad of November 2022, rainfall ranging between 80 and 240 mm is expected across the country. Very heavy rainfall ranging between 200 and 240 mm is expected over Western Province, Musanze District, over western parts of Nyaruguru and Nyamagabe Districts, over northern parts of Burera and Gicumbi Districts. Heavy rainfall ranging between 160 and 200 mm is expected over remaining parts of Northern Province, Nyaruguru and Nyamagabe Districts, over western parts of Nyanza, Ruhango and Muhanga Districts. Rainfall ranging between 80 and 120 mm is the lowest expected over parts of Kigali, Kirehe, Kayonza, Rwamagana, Gatsibo and Nyagatare Districts.

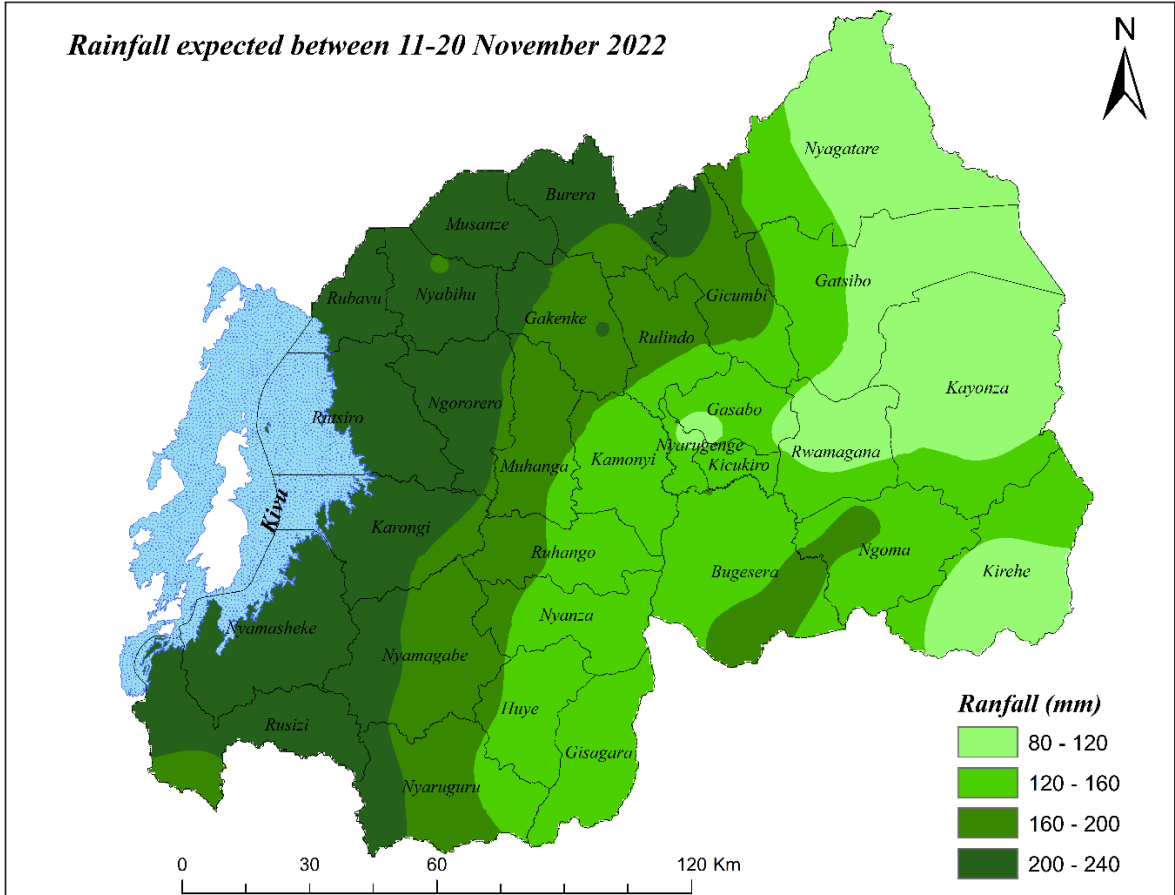
A considerable increase of rainfall compared to records of previous dekads is expected countrywide. The expected rainfall amount will be above the range of Long-Term Mean (LTM) across the country (The range of LTM varies between 30 and 90 mm). Rainy days are expected to vary between seven (7) and ten (10) days during the forecasting period, which makes the dekad to be the wettest. The rains are expected from the start up to the end of the dekad. The predicted rains will result from active Intertropical Convergence Zone (ITCZ) overhead the region where Rwanda is located.

- 2. Forecast of wind speed:** Moderate to slightly strong wind speed ranging between 4 and 8 m/s is expected across the country. Moderate wind speed ranging between 4 and 6 m/s (green colour) is expected in the North-western parts of Nyamasheke, Rusizi, Huye, Gisagara and Nyaruguru Districts. Slightly strong wind speed ranging between 6 and 8 m/s (yellow colour) is expected over the remaining the parts of the country.
- 3. Temperature forecast:** During the first dekad of November 2022, the decrease of maximum temperature is expected across the country. The average maximum temperature is expected to range between 20°C and 28°C. Parts of Kigali City, Amayaga region, Bugarama plain, Bugesera, Ngoma, Gatsibo and Nyagatare Districts are expected to experience higher temperature ranging between 26°C and 28°C. Parts of Ngororero, Rutsiro, Rubavu, Nyabihu, Musanze, Burera, Gicumbi and Nyungwe National Park are expected to receive lower temperatures ranging between 20°C and 22°C. The expected temperature will be below in the range of Long Term Mean maximum temperature.
- 4. Impacts:** Impacts related to heavy rains conditions are prevalent in many parts of the country which include heavy widespread flooding to major rivers and catchments, landslides, poor visibility which may cause incidences of accidents, soil erosion and widespread traffic/travel disruption.

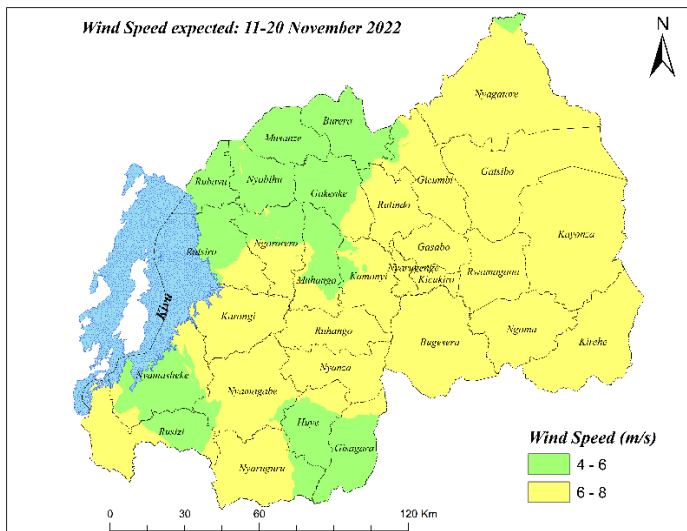
For more detailed information on spatial distribution of rainfall, maximum temperature and wind speed, please refer to the following maps below.



Rainfall expected between 11-20 November 2022



Wind Speed expected: 11-20 November 2022



Maximum Temperature expected: 11-20 November 2022

