



## RAINFALL OUTLOOK FOR JANUARY TO FEBRUARY 2021

The months of January to February 2021 (JF) constitutes part of important rainfall period for the country, the climate systems indicate that there are chances of normal to below normal rains over most parts of the country.

The National climate outlook forecast for January to February 2021 rainfall indicates that, south western parts of the country are likely to experience slightly enhanced rainfall compared to other parts of the country even though it is below the Long Term Mean while the remaining parts of the country will experience normal rainfall.

The expected rainfall is mostly associated with the topographic nature of the country coupled with neutral conditions for Indian Ocean Dipole (IOD) with moderate la Nina conditions in Pacific Ocean throughout the month of February 2021.

The rainfall outlook for different locations is as follows:

- **Rainfall ranging between 250-300 mm** is expected in Nyamasheke district and most parts of Rusizi district and South western of Nyamagabe district.
- **Rainfall ranging between 200-250 mm** is expected in most parts of Nyamagabe, Nyaruguru and Huye districts, South western parts of Nyanza, most parts of Karongi, Southern parts of Rutsiro and South western parts of Rusizi and Ngororero districts.
- **Rainfall ranging between 150-200 mm** is expected in Northern Province (Musanze, Burera, Gicumbi, Gakenke and Rulindo), Western Province (Rubavu, Nyabihu, remaining parts of Ngororero and Rutsiro districts), Southern Province (Gisagara, Ruhango, Muhanga, Kamonyi, remaining parts of Nyanza and eastern parts of Huye and Nyaruguru), Kigali city (Nyarugenge, Kicukiro and Gasabo) and Eastern Province (north eastern parts of Bugesera, Northern parts of Ngoma and southern parts of Rwamagana).
- **Rainfall ranging between 100-150 mm** is expected in Nyagatare, Gatsibo, Kayonza, northern Rwamagana, southern Bugesera, Ngoma and most parts of Kirehe.
- **Rainfall ranging between 50-100 mm** is expected in extreme south of Kirehe district.





### Rainfall forecast for January to February 2021 and the Long Term mean (LTM) for the same period

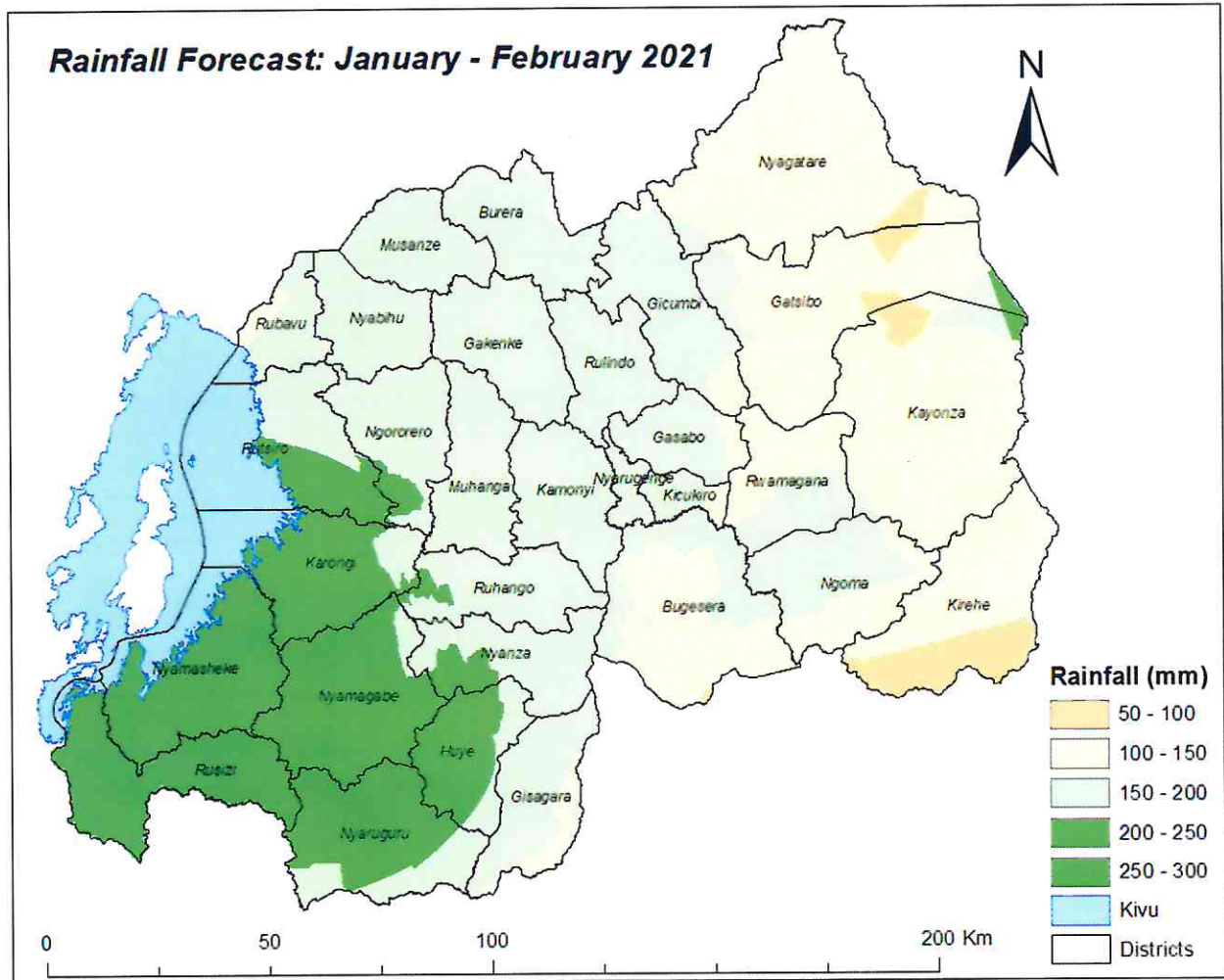


Figure 1: Rainfall forecast for January to February 2021



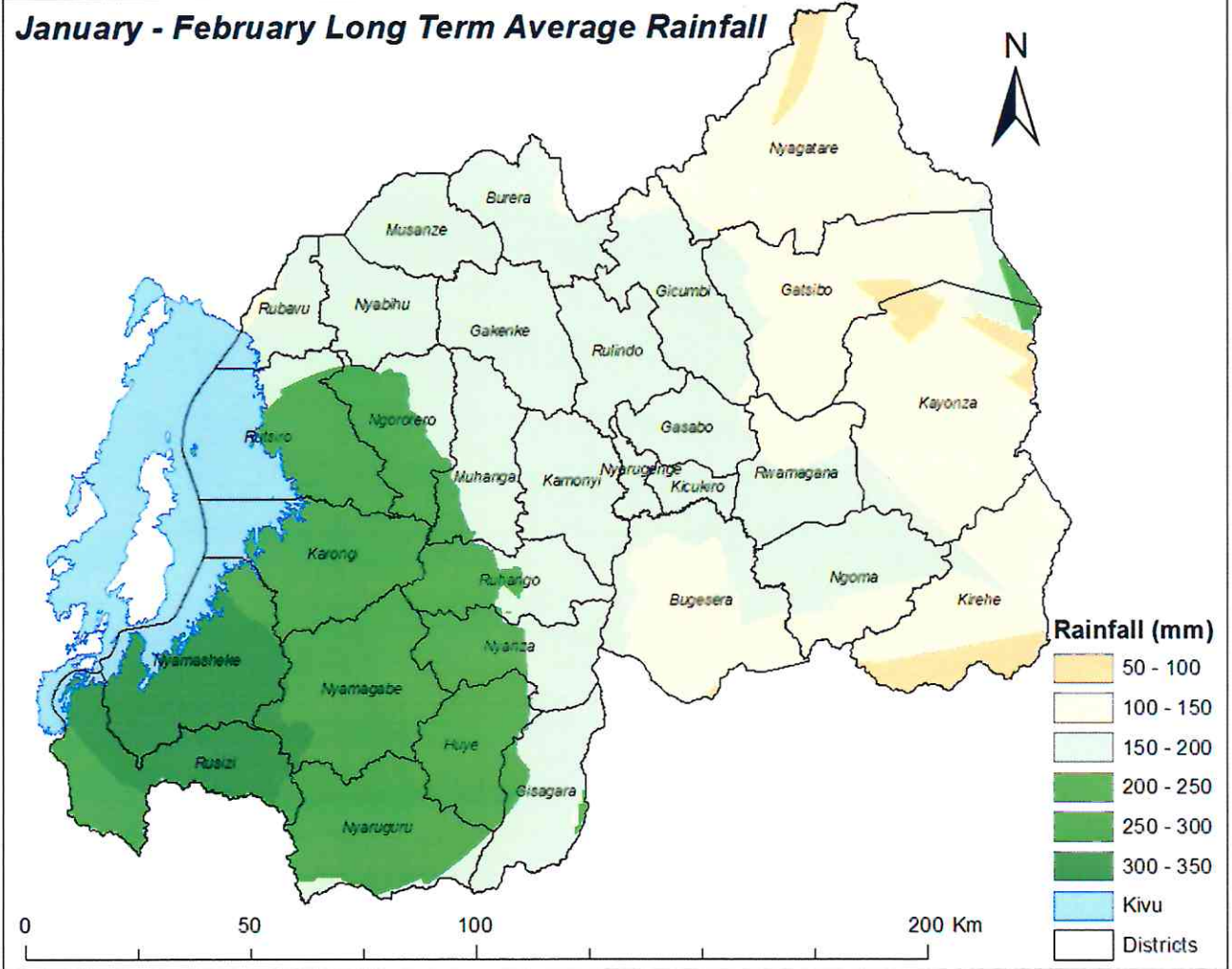


Figure 2: January to February Long-term average rainfall

The expected rainfall may affect post harvest handling activities, therefore relevant authorities are advised to put in place both preventive and mitigative strategies to cope with aforementioned effects.

**N.B** This outlook is supplemented by daily updates at different timescales (24-hours, 3- days 5-days), 10- days forecasts, regular monthly forecast updates and advisories issued by Rwanda Meteorology Agency.

Done on 31<sup>st</sup> December, 2020.

**Aimable GAHIGI**  
Director General

