



## **RAINFALL OUTLOOK FOR JANUARY TO FEBRUARY 2022**

The months of January to February 2022 (JF) constitute an important rainfall period for the country. Where the climate systems indicate that there are chances of normal rains over most parts of the country.

The National climate outlook forecast for January to February 2022 rainfall indicates that the south-western parts of the country and some areas in north-western are likely to experience slightly enhanced above normal rainfall compared to other parts of the country while the remaining parts of the country will experience normal rainfall.

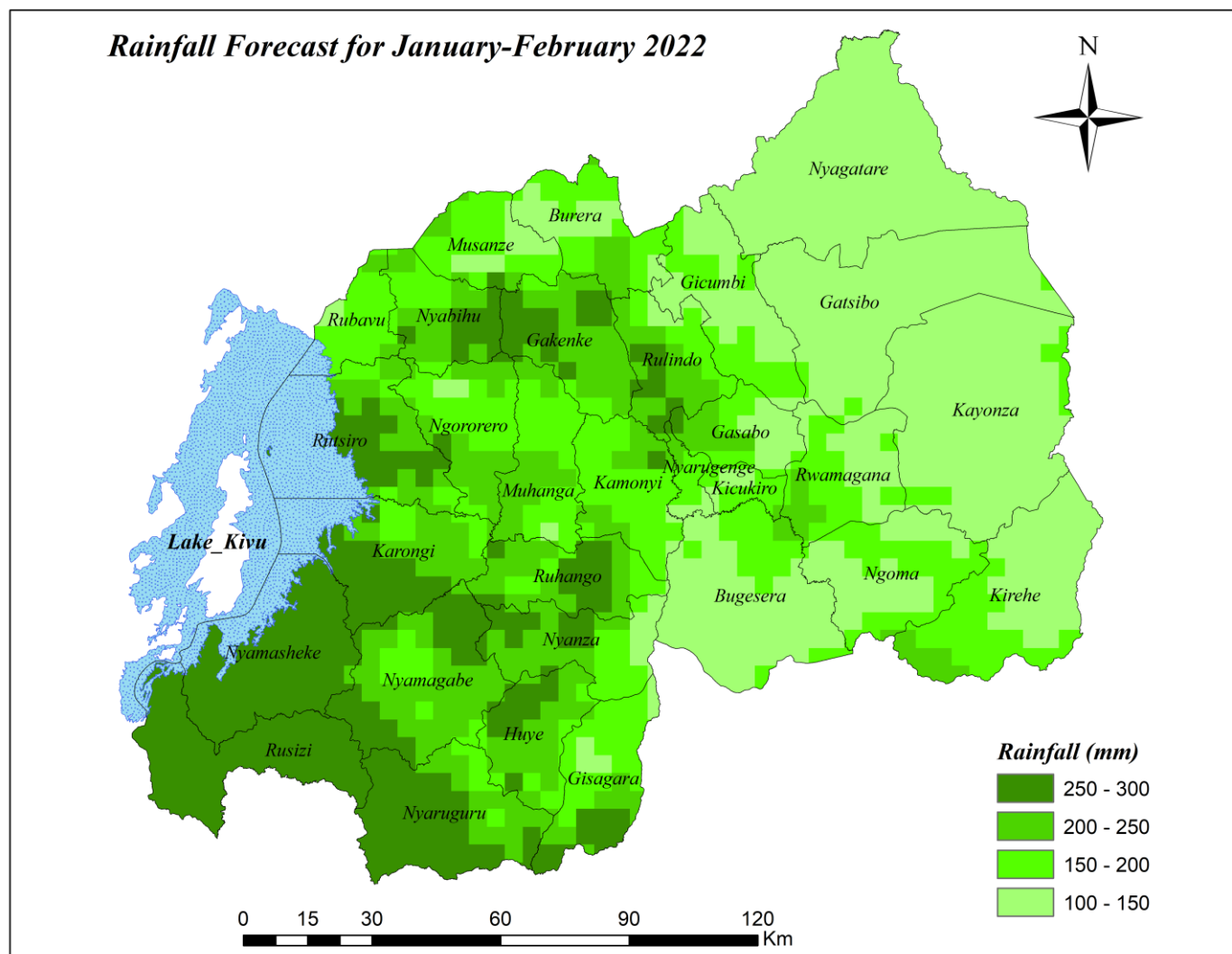
The expected rainfall is mostly associated with the topographic nature of the country coupled with neutral conditions of Indian Ocean Dipole (IOD) and below normal Sea Surface Temperature (SST) in the equatorial Pacific Ocean which will persist throughout JF 2022.

The rainfall outlook for different parts of the country will be as follows:

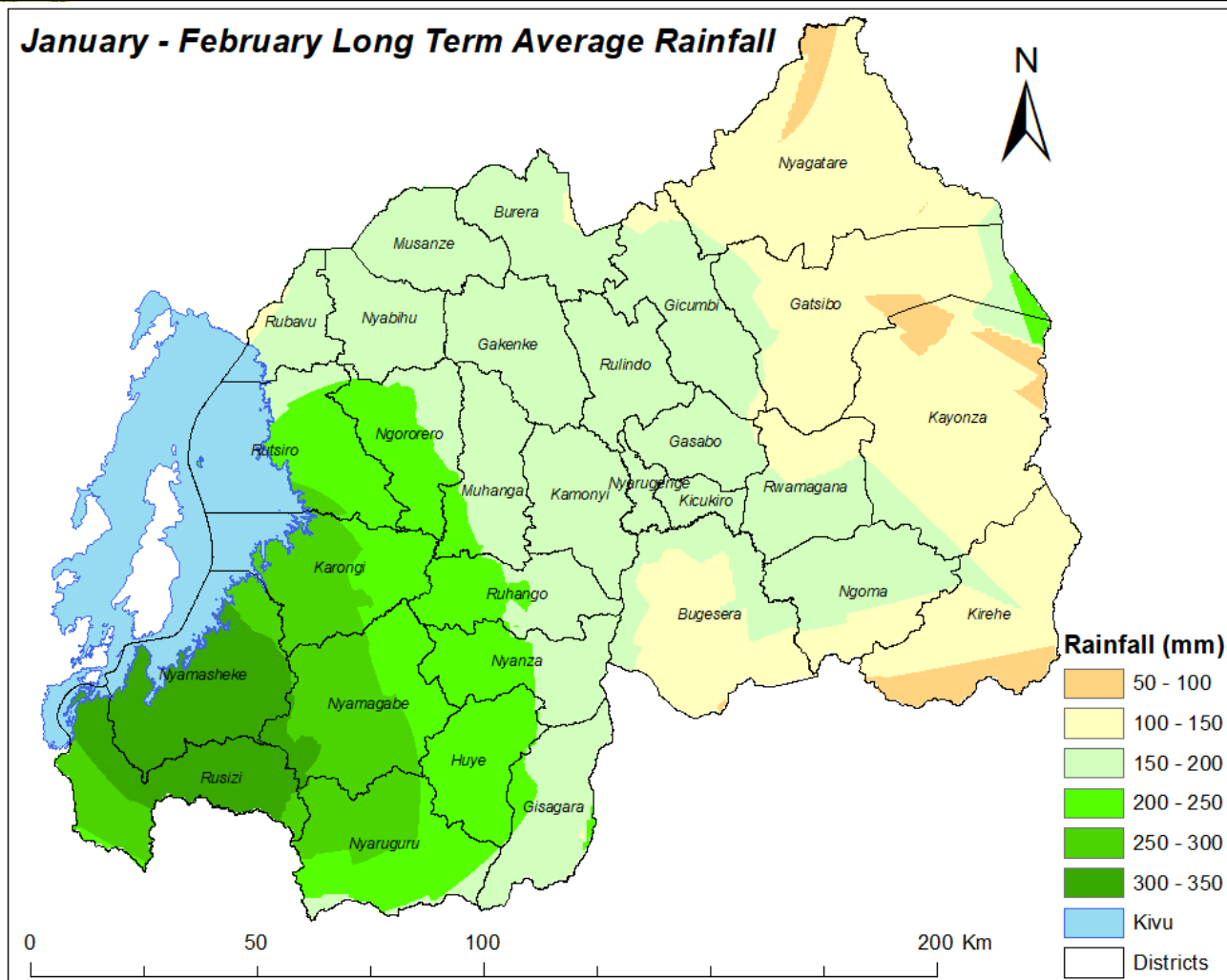
- **Rainfall ranging between 250-300 mm** is expected in most parts of Rusizi and Nyamasheke Districts, western parts of Nyaruguru Nyamagabe and Rutsiro Districts, southern parts of Karongi, Ruhango and Gisagara District, Eastern Nyabihu and Rulindo and some pockets in the north of Nyanza and northwest of Huye Districts.
- **Rainfall ranging between 200-250 mm** is expected in eastern parts of Nyamagabe, Nyaruguru, Karongi, Huye Districts, in southern parts of Muhanga, Nyabihu, Ngororero Rulindo, Burera and Gakenke Districts. The same rainfall amount is projected in the Northern part of Gasabo, northeastern part of Rutsiro and Southeastern part of Rwamagana District.
- **Rainfall ranging between 150-200 mm** is expected in most parts of Rubavu, Musanze, Kamonyi, Gisagara and Burera, northern parts of Nyabihu, Muhanga, Bugesera, Rulindo, Ngoma and Gicumbi Districts, southern parts of Kirehe, Ngoma and Gicumbi, remaining parts of Rwamagana, Nyanza, Kicukiro, Gasabo and Nyarugenge.
- **Rainfall ranging between 100-150 mm** is expected in remaining parts of Eastern Province (Nyagatare, Gatsibo, Kayonza, eastern parts of Rwamagana, Bugesera and Kirehe, southwestern parts of Ngoma and Bugesera, and most parts of Kirehe) and eastern parts of Gasabo Districts.



## Rainfall forecast for January to February 2022 and the Long Term mean (LTM) for the same period



**Figure 1: Rainfall forecast for January to February 2022**



**Figure 2: January to February Long-term normal rainfall.**

The expected rainfall will be within the range of Long Term Mean (LTM) and slightly above over southwestern parts of the country from January to February 2022.

The expected rainfall may affect post harvest activities. Therefore, relevant authorities are advised to put in place strategies to cope with the likely aforementioned effects.

It should be noted that this outlook is supplemented by daily weather updates at different timescales (24-hours, 3- days 5-days and 10-days forecasts), regular monthly forecast updates and advisories issued by the Rwanda Meteorology Agency.

Done on 6<sup>th</sup> January, 2022.

**Aimable GAHIGI**  
**Director General**